



RADFORD'S BRICK HOUSES

AND HOW TO BUILD THEM



Design No. 9532

Size: Width, 31 feet; Length, 33 feet



First Floor Plan

Blue prints consist of base-ment plan; roof plan; first and second floor plans; front, rear, two side elevations; wall sections and all necessary interior details. Specifications consist of twenty-two pages of typewritten matter.

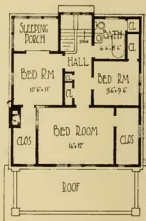
PRICE

of Blue Prints, together with a complete set of typewritten specifications

ONLY

\$32.00

We mail Plans and Specifications the same day order is received.



Second Floor Plan

EXCHANGING PLANS. If returned in good condition within 30 days we will exchange any set of plans, applying full price on any other set desired.



Design No. 9519

Size: Width, 28 feet; Length, 48 feet

Blue prints consist of basement plan; roof plan; floor plan; front, rear, two side elevations; wall sections and all necessary interior details. Specifications consist of twenty-two pages of typewritten matter.

PRICE

of Blue Prints, together with a complete set of typewritten specifications

ONLY

\$22.00

We mail Plans and Specifications the same day order is received.



ESTIMATED COST. A schedule of costs is given on page 219. See also preface page 130.



Design No. 9557

Size: Width, 38 feet; Length, 44 feet



First Floor Plan

Blue Prints consist of basement plan; roof plan; first and second floor plans; front, rear, two side elevations; wall sections and all necessary interior details. Specifications consist of twenty-two pages of typewritten matter.

PRICE

of Blue Prints, together with a complete set of typewritten specifications

ONLY

\$42.00

We mail Plans and Specifications the same day order is received.



Second Floor Plan

ALTERATIONS. We can change any plans to suit your requirements, at a reasonable extra charge depending on amount of work involved.



Design No. 9521

Size: Width, 31 feet 6 inches; Length, 51 feet

Blue prints consist of cellar and foundation plan; roof plan; first floor plan; front, two side elevations; wall sections and all necessary interior details. Specifications consist of twenty-two pages of typewritten matter.

PRICE

of Blue Prints, together with a complete set of typewritten specifications

ONLY

\$24.00

We mail Plans and Specifications the same day order is received.

ESTIMATED COST. A schedule of costs is given on page 219.
See also preface page 130.





Design No. 9554

Size: Width, 42 feet; Length, 41 feet



First Floor Plan

Blue prints consist of basement plan; roof plan; first and second floor plans; front, rear, two side elevations; wall sections and all necessary interior details. Specifications consist of twenty-two pages of typewritten matter.

PRICE

of Blue Prints, together with a complete set of typewritten specifications

ONLY

\$42.00

We mail Plans and Specifications the same day order is received.



Second Floor Plan

PLANS FROM YOUR OWN SKETCHES. Our skilled architects will prepare at lowest cost finished plans embodying your ideas. Write us for full particulars.



Design No. 9533

Size: Width, 32 feet 6 inches; Length, 33 feet



First Floor Plan

Blue prints consist of basement plan; roof plan; first and second floor plans; front, rear, two side elevations; wall sections and all necessary interior details. Specifications consist of twenty-two pages of typewritten matter.

PRICE

of Blue Prints, together with a complete set of typewritten specifications,

ONLY

\$32.00

We mail Plans and Specifications the same day order is received.



Second Floor Plan

ESTIMATED COST. A schedule of costs is given on page 219. See also preface page 130.



Design No. 9534

Size: Width, 45 feet; Length, 25 feet

Blue Prints consist of basement plan; roof plan; first and second floor plans; front, rear, and two side elevations; wall sections and all necessary interior details. Specifications consist of twenty-two pages of typewritten matter.

PRICE

of Blue Prints, together with a complete set of typewritten specifications,

ONLY

\$32.00

We mail Plans and Specifications the same day order is received.



First Floor Plan



Second Floor Plan

EXCHANGING PLANS. If returned in good condition within 30 days we will exchange any set of plans, applying full price on any other set desired.



Design No. 9515

Size: Width, 47 feet 6 inches; Length, 46 feet

Blue prints consist of basement plan; floor plan; front, rear, two side elevations; wall sections and all necessary interior details. Specifications consist of twenty-two pages of type-written matter.

PRICE

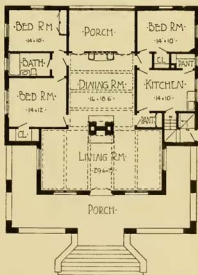
of Blue Prints, together with a complete set of type-written specifications

ONLY

\$26.00

We mail Plans and Specifications the same day order is received.

ALTERATIONS. We can change any plans to suit your requirements, at a reasonable extra charge depending on amount of work involved.



Floor Plan



Design No. 9548

Size: Width, 35 feet; 6 inches; Length, 34 feet



First Floor Plan

Blue prints consist of base-ment plan; roof plan; first and second floor plans; front, rear and two side elevations; wall sections and all necessary interior details. Specifications consist of twenty-two pages of typewritten matter.

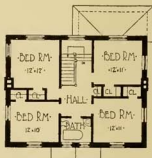
PRICE

of Blue Prints, together with a complete set of typewritten specifications

ONLY

\$40.00

We mail Plans and Specifications the same day order is received.



Second Floor Plan

EXCHANGING PLANS. If returned in good condition within 30 days we will exchange any set of plans, applying full price on any other set desired.



Design No. 9505

Size: Width, 29 feet; Length, 43 feet 6 inches

Blue prints consist of cellar and foundation plan; roof plan; floor plan; front, rear, two side elevations; wall sections and all necessary interior details. Specifications consist of twenty-two pages of typewritten matter.

PRICE

of Blue Prints, together with a complete set of typewritten specifications

ONLY

\$16.00

We mail Plans and Specifications the same day order is received.

ALTERATIONS. We can change any plans to suit your requirements, at a reasonable extra charge depending on amount of work involved.





ATTRACTIVE MODERN BRICK RESIDENCE.
For floor-plans, see page 3.



Design No. 9549

Size: Width, 39 feet; Length, 33 feet

Blue prints consist of basement plan; first and second floor plans; front, rear, two side elevations; wall sections and all necessary interior details. Specifications consist of twenty-two pages of typewritten matter.

PRICE

of Blue Prints, together with a complete set of typewritten specifications

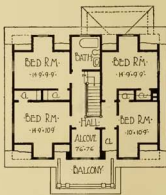
ONLY

\$40.00

We mail Plans and Specifications the same day order is received.



First Floor Plan



Second Floor Plan

PLANS FROM YOUR OWN SKETCHES. Our skilled architects will prepare at lowest cost finished plans embodying your ideas. Write us for full particulars.



Design No. 9501

Size: Width, 26 feet; Length, 32 feet 6 inches

Blue prints consist of basement plan; roof plan; first and second floor plans; front, rear two side elevations; wall sections and all necessary interior details. Specifications consist of twenty-two pages of typewritten matter.

PRICE

of Blue Prints, together with a complete set of typewritten specifications

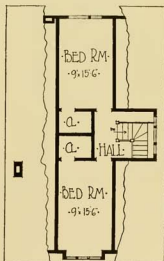
ONLY

\$16.00

We mail Plans and Specifications the same day order is received.



First Floor Plan



Second Floor Plan



Design No. 9529

Size: Width, 26 feet; Length, 37 feet

Blue prints consist of basement plan; first and second floor plans; front, rear, two side elevations; wall sections and all necessary interior details. Specifications consist of twenty-two pages of typewritten matter.

PRICE

of Blue Prints, together with a complete set of typewritten specifications

ONLY

\$30.00

We mail Plans and Specifications the same day order is received.



First Floor Plan



Second Floor Plan

ESTIMATED COST. A schedule of costs is given on page 219. See also preface page 130.



Design No. 9512

Size: Width, 32 feet; Length, 49 feet 6 inches

Blue prints consist of foundation plan; roof plan; floor plan; front, rear, two side elevations; wall sections and all necessary interior details. Specifications consist of twenty-two pages of typewritten matter.

PRICE

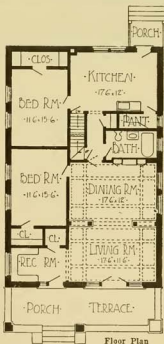
of Blue Prints, together with a complete set of typewritten specifications

ONLY

\$20.00

We mail Plans and Specifications the same day order is received.

PLANS FROM YOUR OWN SKETCHES. Our skilled architects will prepare at lowest cost finished plans embodying your ideas. Write us for full particulars.





Design No. 9524

Size: Width, 31 feet; Length, 27 feet

Blue prints consist of cellar and foundation plan; roof plan; first and second floor plans; front, rear, two side elevations; wall sections and all necessary interior details. Specifications consist of twenty-two pages of typewritten matter.

PRICE

of Blue Prints, together with a complete set of typewritten specifications

ONLY

\$30.00

We mail Plans and Specifications the same day order is received.



First Floor Plan



Second Floor Plan

ALTERATIONS. We can change any plans to suit your requirements, at a reasonable extra charge depending on amount of work involved.



Design No. 9510

Size: Width, 30 feet; Length, 39 feet 6 inches

Blue prints consist of basement plan; roof plan; floor plan; front, rear, and two side elevations; wall sections and all necessary interior details. Specifications consist of twenty-two pages of typewritten matter.

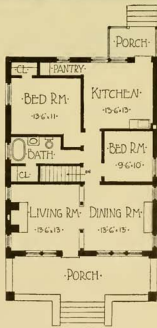
PRICE

of Blue Prints, together with a complete set of typewritten specifications

ONLY

\$18.00

We mail Plans and Specifications the same day order is received.



Floor Plan

ESTIMATED COST. A schedule of costs is given on page 219. See also preface page 130.



Design No. 9542

Size: Width, 44 feet; Length, 30 feet

Blue prints consist of basement plan; first and second floor plans; front, rear, two side elevations; wall sections and all necessary interior details. Specifications consist of twenty-two pages of typewritten matter.

PRICE

of Blue Prints, together with a complete set of typewritten specifications.

ONLY

\$36.00

We mail Plans and Specifications the same day order is received.



First Floor Plan



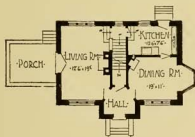
Second Floor Plan

PLANS FROM YOUR OWN SKETCHES. Our skilled architects will prepare at lowest cost finished plans embodying your ideas. Write us for full particulars.



Design No. 9526

Size: Width, 36 feet; Length, 25 feet 6 inches



First Floor Plan



Second Floor Plan

PRICE

of Blue Prints, together with a complete set of type-written specifications

ONLY

\$28.00

We mail Plans and Specifications the same day order is received.

Blue prints consist of basement plan; roof plan; first and second floor plans; front, rear, two side elevations; wall sections and all necessary interior details. Specifications consist of twenty-two pages of type-written matter.

EXCHANGING PLANS. If returned in good condition within 30 days we will exchange any set of plans, applying full price on any other set desired.



Design No. 9503

Size: Width, 26 feet 6 inches; Length, 44 feet 6 inches

Blue prints consist of cellar and foundation plan; roof plan; floor plan; front, rear, two side elevations; wall sections and all necessary interior details. Specifications consist of twenty-two pages of typewritten matter.

PRICE

of Blue Prints, together with a complete set of typewritten specifications

ONLY

\$16.00

We mail Plans and Specifications the same day order is received.



ESTIMATED COST. A schedule of costs is given on page 219. See also preface page 130.



Design No. 9527

Size: Width, 36 feet; Length, 26 feet 6 inches

Blue prints consist of foundation plan; roof plan; first and second floor plans; front, rear, two side elevations; wall sections and all necessary interior details. Specifications consist of twenty-two pages of typewritten matter.

PRICE

of Blue Prints, together with a complete set of typewritten specifications

ONLY

\$28.00

We mail Plans and Specifications same day order is received.



First Floor Plan



Second Floor Plan

ALTERATIONS. We can change any plans to suit your requirements, at a reasonable extra charge depending on amount of work involved.

Radford's Brick Houses

and How to Build Them

A STANDARD COLLECTION OF

NEW, ORIGINAL, AND ARTISTIC DESIGNS FOR BRICK HOUSES,
APARTMENTS, STORES AND FLATS, GARAGES, ETC.;
TOGETHER WITH COMPLETE INSTRUCTION IN
THE MANUFACTURE OF BRICK AND
ITS PRACTICAL USES AS A
BUILDING MATERIAL

Selected and Compiled by

WILLIAM A. RADFORD

President of the Radford Architectural Company, Chicago, Ill.; Editor-in-Chief of
"Radford's Cyclopedia of Construction," "American Carpenter and
Builder," and "Dealers Building Material Record"

Every Plan Designed and Executed by a Corps of

LICENSED ARCHITECTS OF THE HIGHEST PROFESSIONAL STANDING,
ASSISTED BY A STAFF OF EXPERT DRAFTSMEN

OVER 300 DESIGNS AND DETAILS

Covering a Great Variety of Modern Types of Brick Construction, Economical in Cost and Representative
of the Highest Art in the Architectural Treatment of Brick

THE RADFORD ARCHITECTURAL COMPANY

178 W. JACKSON BLVD.
CHICAGO, ILL.

178 FULTON STREET
NEW YORK, N. Y.



Design No. 9516

Size: Width, 45 feet; Length, 50 feet

Blue prints consist of basement plan; roof plan; first floor plan; front, rear, two side elevations; wall sections and all necessary interior details. Specifications consist of twenty-two pages of typewritten matter.

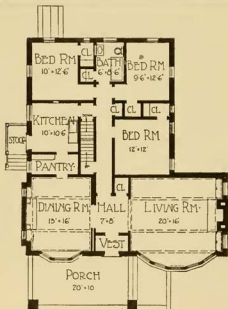
PRICE

of Blue Prints, together with a complete set of typewritten specifications

ONLY

\$20.00

We mail Plans and Specifications the same day order is received.



Floor Plan

EXCHANGING PLANS. If returned in good condition within 30 days we will exchange any set of plans, applying full price on any other set desired.



Design No. 9547

Size: Width, 33 feet; Length, 36 feet 6 inches

Blue prints consist of basement plan; roof plan; first and second floor plans; front, rear, two side elevations; wall sections and all necessary interior details. Specifications consist of twenty-two pages of typewritten matter.

PRICE

of Blue Prints, together with a complete set of typewritten specifications.

ONLY

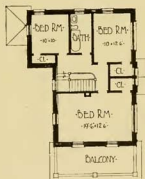
\$38.00

We mail Plans and Specifications the same day order is received.

ALTERATIONS. We can change any plans to suit your requirements, at a reasonable extra charge depending on amount of work involved.



First Floor Plan



Second Floor Plan



Design No. 9538

Size: Width, 28 feet 6 inches; Length, 39 feet

Blue prints consist of basement plan; roof plan; first and second floor plans; front, rear, two side elevations; wall sections and all necessary interior details. Specifications consist of twenty-two pages of typewritten matter.

PRICE

of Blue Prints, together with a complete set of typewritten specifications

ONLY

\$36.00

We mail Plans and Specifications the same day order is received.

ESTIMATED COST. A schedule of costs is given on page 219. See also preface page 130.



First Floor Plan



Second Floor Plan



Design No. 9504

Size: Width, 44 feet 6 inches; Length, 27 feet



Floor Plan

PRICE

of Blue Prints, together with a complete set of type-written specifications

ONLY

\$16.00

Blue prints consist of cellar and foundation plan; roof plan; floor plan; front, rear, two side elevations; wall sections and all necessary interior details. Specifications consist of twenty-two pages of typewritten matter.

We mail Plans and Specifications the same day order is received.

PLANS FROM YOUR OWN SKETCHES. Our skilled architects will prepare at lowest cost finished plans embodying your ideas. Write us for full particulars.



Design No. 9543

Size: Width, 40 feet; Length, 32 feet

Blue prints consist of roof plan; first and second floor plans; front, rear, two side elevations; wall sections and all necessary interior details. Specifications consist of twenty-two pages of typewritten matter.

PRICE

of Blue Prints, together with a complete set of typewritten specifications

ONLY

\$36.00



First Floor Plan



Second Floor Plan

We mail Plans and Specifications the same day order is received.

ALTERATIONS. We can change any plans to suit your requirements, at a reasonable extra charge depending on amount of work involved.



Design No. 9550

Size: Width, 38 feet 9 inches; Length, 38 feet 6 inches

Blue prints consist of basement plan; roof plan; first and second floor plans; front, rear, two side elevations; wall sections and all necessary interior details. Specifications consist of twenty-two pages of typewritten matter.

PRICE

of Blue Prints together with a complete set of typewritten specifications

ONLY

\$36.00

We mail Plans and Specifications the same day order is received.



First Floor Plan



Second Floor Plan

EXCHANGING PLANS. If returned in good condition within 30 days we will exchange any set of plans, applying full price on any other set desired.



Design No. 9544

Size: Width, 32 feet; Length, 42 feet 6 inches

Blue prints consist of foundation plan; first and second floor plans; front, rear, two side elevations; wall sections and all necessary interior details. Specifications consist of twenty-two pages of typewritten matter.

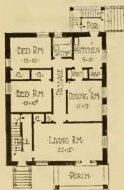
PRICE

of Blue Prints, together with a complete set of typewritten specifications

ONLY

\$46.00

We mail Plans and Specifications the same day order is received.



First Floor Plan



Second Floor Plan



Design No. 9546

Size: Width, 37 feet; Length, 29 feet

PRICE

of Blue Prints, together with a complete set of typewritten specifications

ONLY

\$38.00

We mail Plans and Specifications the same day order is received,



First Floor Plan



Second Floor Plan

Blue Prints consist of basement plan; roof plan; first and second floor plans; front, rear, two side elevations; wall sections and all necessary interior details. Specifications consist of twenty-two pages of typewritten matter.



Design No. 9541

Size: Width, 24 feet; Length, 46 feet 4 inches

Blue prints consist of foundation plan; roof plan; first and second floor plans; front, rear, two side elevations; wall sections and all necessary interior details. Specifications consist of twenty-two pages of typewritten matter.

PRICE

of Blue Prints, together with a complete set of typewritten specifications

ONLY

\$46.00

We mail Plans and Specifications the same day order is received.

If returned in good condition within 30 days we will exchange any set of plans, applying full price on any other set desired.



First Floor Plan

EXCHANGING PLANS.



Second Floor Plan



Design No. 9513

Size: Width, 31 feet; Length, 60 feet 6 inches

Blue prints consist of base-ment plan; roof plan; first floor plan; front, rear, two side elevations; wall sections and all necessary interior details. Specifications consist of twenty-two pages of type-written matter.

PRICE

of Blue Prints, together with a complete set of typewritten specifications

ONLY

\$20.00

We mail Plans and Specifications the same day order is received.

PLANS FROM YOUR OWN SKETCHES. Our skilled architects will prepare at lowest cost finished plans embodying your ideas. Write us for full particulars.



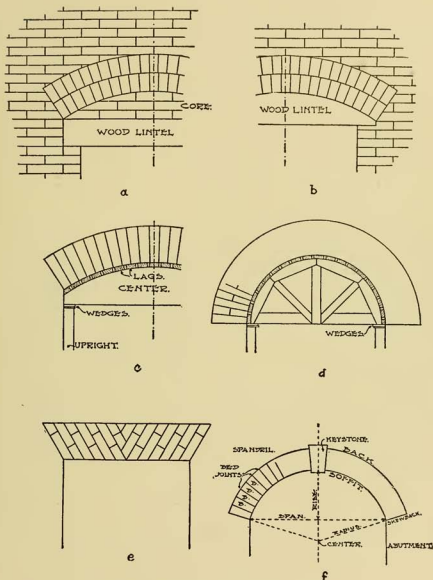


FIG. 106. CONSTRUCTION OF BRICK ARCHES.

Figs. a and b interior views of flat arches. The main weight of the wall is carried by the concealed wooden lintels and the rough brick relieving or discharging arch above. Figs. c and d show wooden falsework used to support the bricks of an arch while the arch is being built. Fig. e, Dutch arch, ornamental though weak in construction and suitable only for openings of narrow span. Bricks have to be specially cut to shape. Fig. f is a diagram giving the proper names for various parts of an arch.



Design No. 9555

Size: Width, 40 feet; Length, 37 feet 6 inches



First Floor Plan

Blue prints consist of basement plan; roof plan; first and second floor plans; front, rear, two side elevations; wall sections and all necessary interior details. Specifications consist of twenty-two pages of typewritten matter.

PRICE

of Blue Prints, together with a complete set of typewritten specifications

ONLY

\$42.00

We mail Plans and Specifications the same day order is received.



Second Floor Plan

ALTERATIONS. We can change any plans to suit your requirements, at a reasonable extra charge depending on amount of work involved.



Design No. 9556

Size: Width, 41 feet 6 inches; Length, 33 feet 6 inches

Blue prints consist of basement plan; roof plan; first and second floor plans; front, rear, two side elevations; wall sections and all necessary interior details. Specifications consist of twenty-two pages of typewritten matter.

PRICE

of Blue Prints, together with a complete set of typewritten specifications.

ONLY

\$42.00

We mail Plans and Specifications the same day order is received.



First Floor Plan



Second Floor Plan

ESTIMATED COST. A schedule of costs is given on page 219. See also preface page 130.



Design No. 9552

Size: Width, 35 feet; Length,
46 feet 6 inches

Blue prints consist of basement plan; first and second floor plans; front, two side elevations; wall sections and all necessary interior details. Specifications consist of twenty-two pages of typewritten matter.

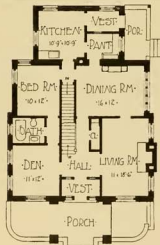
PRICE

of Blue Prints, together with a complete set of typewritten specifications

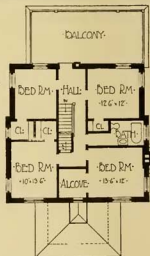
ONLY

\$44.00

We mail Plans and Specifications the same day order is received.



First Floor Plan



Second Floor Plan

PLANS FROM YOUR OWN SKETCHES. Our skilled architects will prepare at lowest cost finished plans embodying your ideas. Write us for full particulars.



Design No. 9530

Size: Width, 32 feet; Length, 32 feet

Blue prints consist of basement plan; first and second floor plans; front, rear, two side elevations; wall sections and all necessary interior details. Specifications consist of twenty-two pages of typewritten matter.

PRICE

of Blue Prints, together with a complete set of typewritten specifications

ONLY

\$30.00

We mail Plans and Specifications the same day order is received.



First Floor Plan



Second Floor Plan

EXCHANGING PLANS.

If returned in good condition within 30 days we will exchange any set of plans, applying full price on any other set desired.



Design No. 9558

Size: Width, 36 feet 6 inches; Length, 50 feet



First Floor Plan

Blue prints consist of basement plan; roof plan; first and second floor plans; front, rear, two side elevations; wall sections and all necessary interior details. Specifications consist of twenty-two pages of typewritten matter.

PRICE

of Blue Prints, together with a complete set of typewritten specifications.

ONLY

\$44.00

We mail Plans and Specifications the same day order is received.



Second Floor Plan

ESTIMATED COST. A schedule of costs is given on page 219. See also preface page 130.



Design No. 9520

Size: Width, 32 feet 6 inches;
Length, 42 feet

Blue prints consist of basement plan; attic and roof plan; first and second floor plans; front, rear, two side elevations; wall sections and all necessary interior details. Specifications consist of twenty-two pages of typewritten matter.

PRICE

of Blue Prints, together with a complete set of typewritten specifications

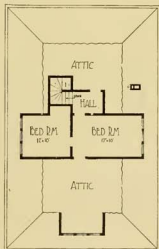
ONLY

\$22.00

We mail Plans and Specifications the same day order is received.



First Floor Plan



Second Floor Plan

ALTERATIONS. We can change any plans to suit your requirements, at a reasonable extra charge depending on amount of work involved.



Design No. 9522

Size: Width, 25 feet 6 inches; Length, 25 feet 6 inches



First Floor Plan

Blue prints consist of basement plan; first and second floor plans; front, rear, two side elevations; wall sections and all necessary interior details. Specifications consist of twenty-two pages of typewritten matter.

PRICE

of Blue Prints, together with a complete set of typewritten specifications

ONLY

\$28.00

We mail Plans and Specifications the same day order is received.



Second Floor Plan

EXCHANGING PLANS. If returned in good condition within 30 days we will exchange any set of plans, applying full price on any other set desired.



Design No. 9537

Size: Width, 38 feet; Length, 36 feet

Blue prints consist of cellar and foundation plan; first and second floor plans; front, rear, two side elevations; wall sections and all necessary interior details. Specifications consist of twenty-two pages of typewritten matter.

PRICE

of Blue Prints, together with a complete set of typewritten specifications

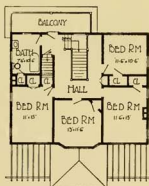
ONLY

\$34.00

We mail Plans and Specifications the same day order is received.



First Floor Plan



Second Floor Plan

PLANS FROM YOUR OWN SKETCHES. Our skilled architects will prepare at lowest cost finished plans embodying your ideas. Write us for full particulars.





Design No. 9525

Size: Width, 34 feet; Length, 28 feet 8 inches



First Floor Plan

Blue prints consist of foundation plan; first and second floor plans; front, two side elevations; wall sections and all necessary interior details. Specifications consist of twenty-two pages of typewritten matter.



Second Floor Plan

PRICE

of Blue Prints, together with a complete set of typewritten specifications

ONLY

\$28.00

We mail Plans and Specifications the same day order is received.

ALTERATIONS. We can change any plans to suit your requirements, at a reasonable extra charge depending on amount of work involved.

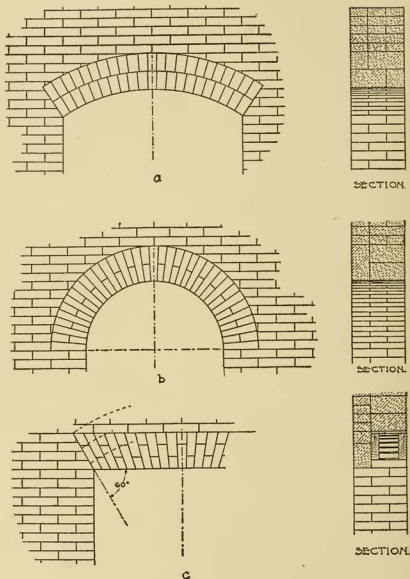


FIG. 107. CONSTRUCTION OF BRICK ARCHES.

Fig. a, segmental arch, with two-rowlock arch used in common work. The bricks are laid on edge in two concentric rings extending through the wall. Fig. b, segmental arch formed of ordinary bricks rubbed or cut to the required shape, and forming a perfect bond. Fig. c, flat arch composed of bricks rubbed or cut to the required shape. Arches of this form should have a rise, or camber, equal to about one-eighth of an inch for every foot of span, in order to prevent sagging. A concealed wooden lintel or arched framework bears most of the weight above.



Design No. 9514

Size: Width, 40 feet 3 inches; Length, (including garage) 57 feet, exclusive of porch



First Floor Plan

Blue prints consist of basement plan; roof plan; first and second floor plans; front, rear, two side elevations; wall sections and all necessary interior details. Specifications consist of about twenty-two pages of typewritten matter.

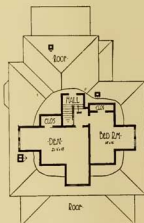
PRICE

of Blue Prints, together with a complete set of typewritten specifications

ONLY

\$22.00

We mail Plans and Specifications the same day order is received.



Second Floor Plan

ALTERATIONS. We can change any plans to suit your requirements, at a reasonable extra charge depending on amount of work involved.



Design No. 9540

Size: Width, 42 feet; Length, 28 feet 6 inches

Blue prints consist of basement plan; roof plan; first and second floor plans; front, rear, two side elevations; wall sections and all necessary interior details. Specifications consist of twenty-two pages of typewritten matter.

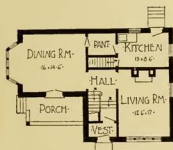
PRICE

of Blue Prints, together with a complete set of typewritten specifications

ONLY

\$32.00

We mail Plans and Specifications the same day order is received.



First Floor Plan



Second Floor Plan

PLANS FROM YOUR OWN SKETCHES. Our skilled architects will prepare at lowest cost finished plans embodying your ideas. Write us for full particulars.



Design No. 9539

Size: Width, 40 feet 3 inches; Length, 30 feet



First Floor Plan



Second Floor Plan

PRICE

of Blue Prints, together with a complete set of typewritten specifications

ONLY

\$36.00

We mail Plans and Specifications the same day order is received.

Blue prints consist of basement plan; roof plan; first and second floor plans; front, rear, two side elevations; wall sections and all necessary interior details. Specifications consist of twenty-two pages of typewritten matter.

ESTIMATED COST. A schedule of costs is given on page 219. See also preface page 130.



Design No. 9507

Size: Width, 29 feet; Length, 49 feet 6 inches

Blue prints consist of basement plan; roof plan; floor plan; front, rear and two side elevations; wall sections and all necessary interior details. Specifications consist of twenty-two pages of typewritten matter.

PRICE

of Blue Prints, together with a complete set of typewritten specifications

ONLY

\$18.00

We mail Plans and Specifications the same day order is received.

EXCHANGING PLANS. If returned in good condition within 30 days we will exchange any set of plans, applying full price on any other set desired.

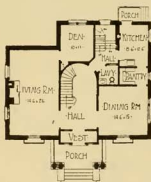


Floor Plan



Design No. 9553

Size: Width, 44 feet; Length, 37 feet 6 inches



First Floor Plan

Blue prints consist of foundation plan; first and second floor plans; front, rear, two side elevations; wall sections and all necessary interior details. Specifications consist of twenty-two pages of typewritten matter.

PRICE

of Blue Prints, together with a complete set of typewritten specifications

ONLY

\$40.00

We mail Plans and Specifications the same day order is received.



Second Floor Plan

PLANS FROM YOUR OWN SKETCHES. Our skilled architects will prepare at lowest cost finished plans embodying your ideas. Write us for full particulars.



Design No. 9502

Size: Width, 28 feet 6 inches; Length,
37 feet 6 inches

Blue prints consist of basement plan; floor plan; front, rear, two side elevations; wall sections and all necessary interior details. Specifications consist of twenty-two pages of typewritten matter.

PRICE

of Blue Prints, together with a complete set of typewritten specifications

ONLY

\$16.00

We mail Plans and Specifications the same day order is received.

ALTERATIONS. We can change any plans to suit your requirements, at a reasonable extra charge depending on amount of work involved.



Floor Plan



Design No. 9509

Size: Width, 52 feet 6 inches; Length, 28 feet



Floor Plan

Blue prints consist of basement plan; floor plan; front, rear, two side elevations; wall sections and all necessary interior details. Specifications consist of twenty-two pages of typewritten matter.

PRICE

of Blue Prints, together with a complete set of typewritten specifications

ONLY

\$18.00

We mail Plans and Specifications the same day order is received.

EXCHANGING PLANS. If returned in good condition within 30 days we will exchange any set of plans, applying full price on any other set desired.



Design No. 9536

Size: Width, 37 feet; Length, 33 feet 6 inches, exclusive of porches

Blue Prints consist of cellar and foundation plan; roof plan; first and second floor plans; front, rear, two side elevations; wall sections and all necessary details. Specifications consist of about twenty-two pages of typewritten matter.



First Floor Plan



Second Floor Plan

PRICE

of Blue Prints, together with a complete set of typewritten specifications

\$34.00

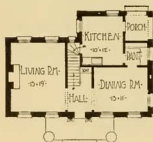
We mail plans and specifications the same day order is received.

ESTIMATED COST. A schedule of costs is given on page 219. See also preface page 130.



Design No. 9545

Size: Width, 36 feet; Length, 26 feet



First Floor Plan

Blue prints consist of basement plan; first and second floor plans; front, rear, and two side elevations; wall sections and all necessary interior details. Specifications consist of twenty-two pages of typewritten matter.

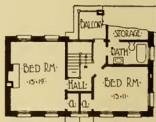
PRICE

of Blue Prints, together with a complete set of typewritten specifications

ONLY

\$38.00

We mail Plans and Specifications the same day order is received.



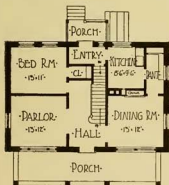
Second Floor Plan

PLANS FROM YOUR OWN SKETCHES. Our skilled architects will prepare at lowest cost finished plans embodying your ideas. Write us for full particulars.



Design No. 9531

Size: Width, 38 feet; Length, 26 feet



First Floor Plan

Blue prints consist of basement plan; first and second floor plans; front, rear, two side elevations; wall sections and all necessary interior details. Specifications consist of twenty-two pages of typewritten matter.

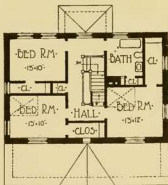
PRICE

of Blue Prints, together with a complete set of typewritten specifications

ONLY

\$30.00

We mail Plans and Specifications the same day order is received.



Second Floor Plan

EXCHANGING PLANS. If returned in good condition within 30 days we will exchange any set of plans, applying full price on any other set desired.



Design No. 9535

Size: Width, 37 feet; Length, 28 feet

Blue prints consist of basement plan; roof plan; first and second floor plans; front, rear, two side elevations; wall sections and all necessary interior details. Specifications consist of twenty-two pages of typewritten matter.

PRICE

of Blue Prints, together with a complete set of typewritten specifications

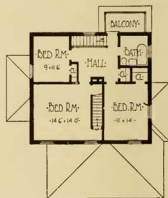
ONLY

\$34.00

We mail Plans and Specifications the same day order is received.



First Floor Plan.



Second Floor Plan

EXCHANGING PLANS. If returned in good condition within 30 days we will exchange any set of plans, applying full price on any other set desired.



Design No. 9511

Size: Width, 28 feet 6 inches; Length, 51 feet



Floor Plan

Blue prints consist of foundation plan; roof plan; floor plan; front, rear, two side elevations; wall sections and all necessary interior details. Specifications consist of twenty-two pages of typewritten matter.

PRICE

of Blue Prints, together with a complete set of typewritten specifications

ONLY

\$18.00

We mail Plans and Specifications the same day order is received.

ALTERATIONS. We can change any plans to suit your requirements, at a reasonable extra charge depending on amount of work involved.



Design No. 9551

Size: Width, 31 feet 6 inches; Length, 45 feet 6 inches



First Floor Plan



Second Floor Plan



Third Floor Plan

Blue prints consist of basement plan; roof plan; first and second and third floor plans; front, rear, two side elevations; wall sections and all necessary interior details. Specifications consist of twenty-two pages of typewritten matter.

PRICE
of Blue Prints, together with a complete set of type-written specifications

ONLY
\$42.00

We mail Plans and Specifications the same day order is received.



Design No. 9506

Size: Width, 29 feet; Length, 48 feet 6 inches

Blue prints consist of basement plan; floor plan; front, rear, two side elevations; wall sections and all necessary interior details. Specifications consist of twenty-two pages of typewritten matter.

PRICE

of Blue Prints, together with a complete set of typewritten specifications

ONLY

\$16.00

We mail Plans and Specifications the same day order is received.



EXCHANGING PLANS. If returned in good condition within 30 days we will exchange any set of plans, applying full price on any other set desired.



Design No. 9523

Size: Width, 30 feet 6 inches; Length, 26 feet

Blue prints consist of base-ment plan; first and second floor plans; front, rear, two side elevations; wall sections and all necessary interior details. Specifications consist of twenty-two pages of type-written matter.

PRICE

of Blue Prints, together with a complete set of typewritten specifications

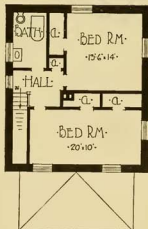
ONLY

\$28.00

We mail Plans and Specifications the same day order is received.



First Floor Plan



Second Floor Plan

PLANS FROM YOUR OWN SKETCHES. Our skilled architects will prepare at lowest cost finished plans embodying your ideas. Write us for full particulars.



DESIGN NO. 4018.

Size: Width, 25 feet; Length, 60 feet.



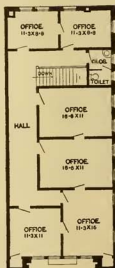
First Floor Plan

Blue Prints consist of basement plan; first and second floor plans; all necessary elevations and necessary interior and exterior details.

Specifications are typewritten and contain all the information necessary for the proper construction of the building.

Price of Plans and Specifications.....\$15.00

Very attractive design for Bank Building to be constructed of brick with front of stone and brick making a very handsome and practical building suitable for any city or town. The first floor is devoted exclusively to banking purposes. In the center is placed a large fire-proof vault. Back of the vault the entrance and stairs to the basement are located. In the extreme rear provision is made for a directors' room, 14 feet by 12 feet 6 inches, and a small private office 8 feet 6 inches square with entrance to both the directors' room and the bank proper. The second floor is devoted entirely to offices, and if not required for use by bank can be rented separately or en suite. Estimated cost of construction under favorable conditions from about \$5100.00 to about \$5800.00.



Second Floor Plan



DESIGN NO. 4089.

Size: Width, 25 feet; Length, 60 feet.

Blue Prints consist of basement plan; first and second floor plans; all necessary elevations and necessary interior details. Specifications are typewritten and contain all the information necessary for the proper construction of the building.

Price of Plans and Specifications.....\$10.00

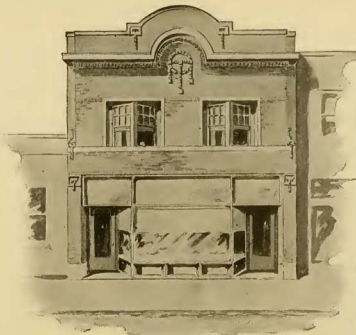
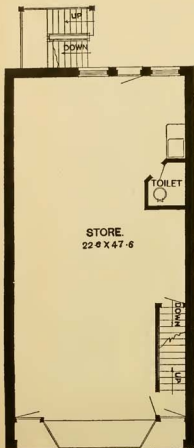
Popular style for two-story building of brick with stone trimmings designed for a lodge hall with store underneath, the entire first floor being devoted to that purpose. The lodge room proper on the upper floor is 22 feet 6 inches by 42 feet with ante-room 16 feet 6 inches by 14 feet 6 inches, closet and hall with stairway leading to street. Estimated cost of construction under favorable conditions, from about \$5000.00 to about \$5500.00.



First Floor Plan



Second Floor Plan



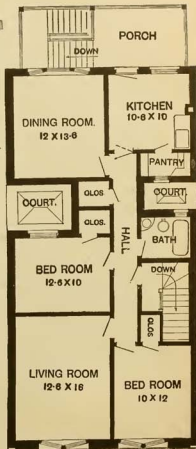
DESIGN NO. 4009.

Size: Width, 25 feet; Length, 50 feet.

Blue Prints consist of basement plan; first and second floor plan; all necessary elevations and interior details. Specifications are type-written and contain all the information necessary for the proper construction of the building.

Price of Plans and Specifications.....\$15.00

Original and attractive design for Store and Flat Building to be constructed of brick with stone trimmings. The entire lower floor is devoted to store room purposes with one large show window in center. Entrance to the store is located at one side and to second floor on opposite side. There is also an entrance from the store to the hall going upstairs. Basement is full height and has entrance from the store. The second floor consists of living room, dining room, kitchen, two bedrooms, bath, pantry, closets, etc. Large back porch. Estimated cost of construction, under favorable conditions, from about \$4100.00 to about \$4500.00.





First Floor Plan



DESIGN NO. 4003

Size: Width, 25 feet; Length, 50 feet.

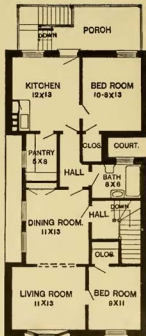
Blue Prints consist of basement plan; first and second floor plans; all necessary elevations and necessary interior details.

Specifications are typewritten and contain all the information necessary for the proper construction of the building.

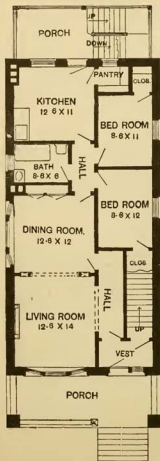
Price of Plans and Specifications..... \$15.00

Very neat and practical design for Store and Flat Building of brick with stone trimmings. First floor is divided into a store 30 feet by 22 feet 6 inches with living room, bedroom, pantry and lavatory in rear, while the second floor contains living room, kitchen, two chambers, bath, pantry, halls and closets. This style of building is designed especially for a city lot, but is also well suited to small towns, suburbs or villages and is the kind of a building that will never be a drug on the market should it be necessary to dispose of it.

Estimated cost of construction under favorable conditions from about \$4,300.00 to about \$5,000.00.



Second Floor Plan



First Floor Plan



DESIGN NO. 4044.

Size: Width, 24 feet; Length, 48 feet 6 inches.

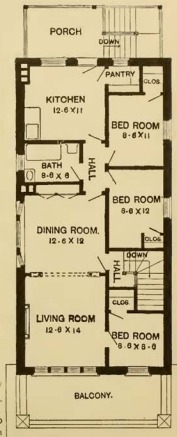
Blue Prints consist of basement plan; first and second floor plans; all necessary elevations and interior details.

Specifications are typewritten and contain all the information for the proper construction of the building.

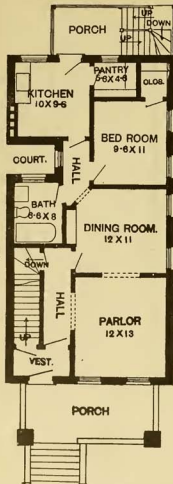
Price of Plans and Specifications.....\$15.00

Two Flat Building of brick construction with stone trimmings. Large wooden porch extends clear across the front with balcony for the second floor. First floor contains five large rooms, bath, pantry, halls, closets, etc., while the second floor contains six rooms, bath, halls, closets, etc. Large back porches. This particular style of architecture is very popular at the present time, and a house built after this design will look well in any community.

Estimated cost of construction under favorable conditions from about \$3,900.00 to about \$4,500.00.



Second Floor Plan



First Floor Plan



DESIGN NO. 4021.

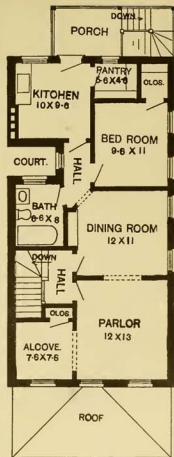
Size: Width, 22 feet; Length, 43 feet.

Blue Prints consist of basement plan; first and second floor plans; all necessary elevations, and necessary interior details.

Specifications are typewritten and contain all the information necessary for the proper construction of the building.

Price of Plans and Specifications.....\$15.00

Colonial Design for two flat building of brick with stone trimmings. Large front porch for use of both families. This building was designed especially for the City, the width being 22 feet and it meets with all the City Building requirements. The first floor consists of parlor, dining room, kitchen, bedroom, bath; pantry, closets, etc. The second floor is practically the same but has the addition of an alcove opening from the parlor. The estimated cost of construction for a building of this kind, under favorable conditions, is from about \$4000.00 to about \$4500.00.



Second Floor Plan



Design No. 9508

Size: Width, 29 feet; Length, 50 feet 6 inches

Blue prints consist of basement plan; floor plan; front, rear, two side elevations; wall sections and all necessary interior details. Specifications consist of twenty-two pages of typewritten matter.

PRICE

of Blue Prints, together with a complete set of typewritten specifications

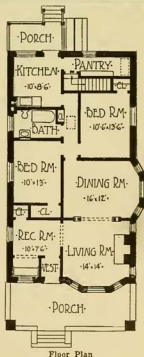
ONLY

\$18.00

We mail Plans and Specifications the same day order is received.

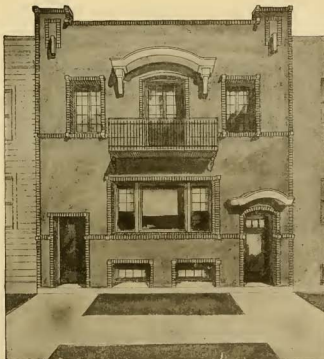
ESTIMATED COST. A schedule of costs is given on page 219.

See also preface page 130.





First Floor Plan



DESIGN NO. 4001.

Size: Width, 25 feet; Length, 73 feet 6 inches.

Blue Prints consist of basement plan; first and second floor plans; all elevations and necessary interior details.

Specifications are typewritten and contain all the information necessary for the proper construction of the building.

Price of Plans and Specifications.....\$15.00

Two Family Brick House with front of Cream Plaster and red brick trimmings. Large French windows on second floor opening onto a wrought iron balcony. This building was designed for an ordinary city lot where economy of space is essential. The private porches opening from dining rooms are a feature. Estimated cost of construction under favorable conditions from about \$6000.00 to \$7000.00.



Second Floor Plan



DESIGN NO. 4006.

Size: Width, 25 feet; Length, 54 feet.

Blue Prints consist of basement plan; first and second floor plans; all necessary elevations and necessary interior details.

Specifications are typewritten and contain all the information necessary for the proper construction of the building.

Price of Plans and Specifications.....\$15.00

Unique design for Two Flat Building constructed of brick with stone trimmings and plaster panels. Each apartment has a separate entrance affording privacy and complete isolation if desired. Each apartment has five good sized rooms, the upper floor gaining the additional space over entrance which can be devoted to a cosy corner or book room. Estimated cost of construction under favorable conditions from about \$4500.00 to about \$5100.00.





DESIGN NO. 4026.

Size: Width, 40 feet 6 inches: Length, 55 feet.

See Opposite Page for First and Second Floor Plans for this building.

Blue Prints consist of basement plan; first and second floor plans; all necessary elevations and necessary interior details. Specifications are typewritten and contain all the information necessary for the proper construction of the building.

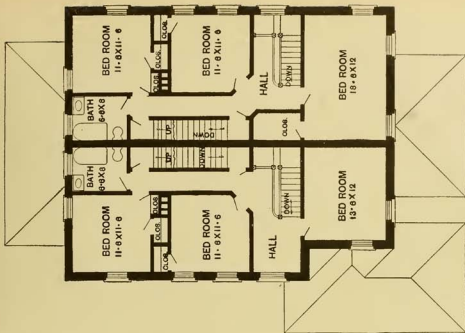
Price of Plans and Specifications..... \$20.00

Modern and commodious twin or double house of brick construction with stone trimmings, shingled roof. This design is large and well suited to a broad suburban lot. The entrance porches are well apart and the division is on a straight party line. The design is one of much dignity and the building will form a notable landmark in any locality. The first floor contains the reception hall, living room, dining room and kitchen and the second floor three large sleeping rooms, bath, hall, closets, etc. Estimated cost of construction, under favorable conditions, from about \$6700.00 to about \$7500.00.



First Floor Plan

DESIGN NO. 4026.



Second Floor Plan

See opposite page for Perspective View, description and price of plans and Specifications for this building.



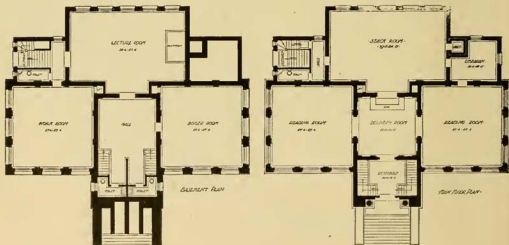
Design No. 75-S

SMALL PUBLIC LIBRARY

Size: Width, 80 feet; Length, 68 feet

Blue prints consist of basement plan, main floor plan; all necessary elevations and necessary interior and exterior details.

Specifications are typewritten and contain information necessary for the proper construction of the building. Price of Plans and Specifications furnished on application.



This is a well designed Modern Public Library, so arranged as to utilize all the space. The design is modest, yet attractive and convenient and would prove a valuable addition to any city. The basement is exceptionally well planned and well lighted, providing a good sized lecture room.



Design No. 661-S

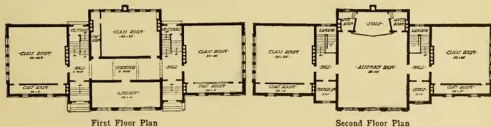
SMALL HIGH SCHOOL

Size: Width, 132 feet; Length, 56 feet

Blue Prints consist of foundation plan, first and second floor plans; all necessary elevations and necessary interior and exterior details.

Specifications are typewritten and contain all information necessary for the proper construction of the building.

Price of Plans and Specifications furnished on application.



First Floor Plan

Second Floor Plan

This is a Good Design for a Small High School

The assembly room affords the particularly interesting part of this small high school. Placing this assembly room upon second floor results in not only high walls and ceiling for the room itself, insuring ample air space, but also makes it possible to add materially to the architectural effect of the exterior.

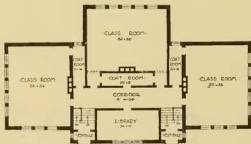


Design No. 321-S

THREE-ROOM VILLAGE SCHOOL

Size: Width, 98 feet; Length, 55 feet

Blue Prints consist of basement plan; floor plan; all necessary elevations and necessary interior and exterior details. Specifications are typewritten and contain all information necessary for the proper construction of the building. Price of Plans and Specifications furnished on application.



Main Floor Plan

Venerable as was the "Little Red Schoolhouse" where the birch rod formerly held sway, that historic relic which laid our fathers under tribute is fast becoming a mere memory. A structure built on broader lines and with a more intelligent eye to the increasing complex educational needs of a later generation, is taking its place.

In the accompanying perspective and floor-plan of a school building for a suburban or rural district, we find a perfect adaptation to the most advanced modern ideals combined with conformity to limitations of moderate cost—an up-to-date Public School Building—adapted to classroom use and community gatherings.

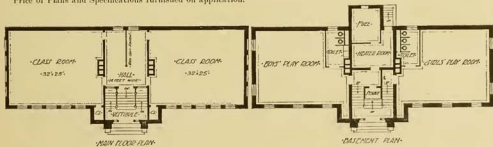


Design No. 250-S

MODERN RURAL SCHOOL

Size: Width, 82 feet; Length, 32 feet

Blue Prints consist of basement plan; floor plans; all necessary elevations and necessary interior and exterior details. Specifications are typewritten and contain all information necessary for the proper construction of the building. Price of Plans and Specifications furnished on application.



What may be considered the interesting feature of this modern country school building, is that the basement space has been made use of for both boys' and girls' play rooms.

A decidedly unique idea in buildings of this size—and it is a very practical and sensible plan.

Note by reference to the floor plans the concise arrangement with ample room and light allowed.



Design No. 26-S

VILLAGE OR TOWN HALL

Size: Width, 49 feet; Length, 62 feet 6 inches

Blue Prints consist of foundation plan; floor plan; all necessary elevations and necessary interior and exterior details.

Specifications are typewritten and contain all the information necessary for the proper construction of the building.

Price of Plans and Specifications furnished on application.

Substantial Building of Strong Design for Village or Town Hall

The design shown is an example of what may be accomplished, by skillful planning, for even so unpromising a building as a small size Village or Town Hall—which has to provide accommodations not only for the village officials and the court but also for the village fire department and the lock-up. Such a building is usually anything but an improvement to the looks of the street on which it stands, resembling more a livery stable or barracks than an important public building. The two widely separated requirements of a structure of this kind make it a hard problem of design, especially in view of the fact that the cost usually has to be kept very low.

In this design the architect has solved the problem very satisfactory by placing the fire equipment room and the lock-up in the ell at the rear of the building; the offices are at the front, with the court room immediately back of them. The building as a whole presents a very dignified appearance. It is constructed of dark brown brick with Bedford stone trimmings.





Design No. 3003

Lutheran Church

with a seating capacity of 175

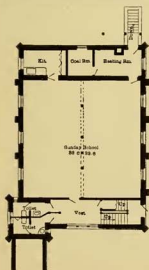
Size: 39 x 54 feet

A brick church with stone trimmings. A good design. There is abundant vestibule space and separate entrances to the basement.

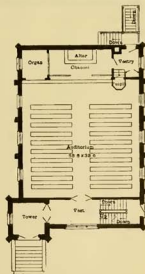
Approximate cost from \$5,500 to \$6,000.

Price of Blue Printed Plans and Complete Set of Specifications,

\$120.00



Basement Plan



Main Floor Plan.



Design No. 9528

Size: Width, 28 feet, 6 inches; Length, 34 feet

Blue Prints consist of basement plan; roof plan; first and second floor plans; front, rear, two side elevations; wall sections and all necessary interior details. Specifications consist of twenty-two pages of typewritten matter.

PRICE

of Blue Prints, together with a complete set of typewritten specifications

ONLY

\$30.00

We mail Plans and Specifications the same day order is received.



First Floor Plan



Second Floor Plan

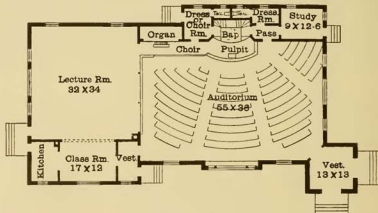
ALTERATIONS. We can change any plans to suit your requirements, at a reasonable extra charge depending on amount of work involved.



Design No. 3021

Baptist Church with a seating capacity of 270

A fine building, in the Italian style, particularly adapted for a corner lot. Well arranged floor plan. Cost from \$10,000 to \$11,000.



Main Floor Plan.

Size: 57 x 99 feet

Price of Blue Printed Plans and Complete Set of Specifications,

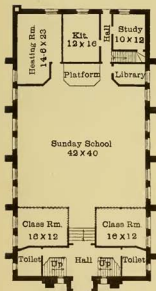
\$115.00



Design No. 3007

Unitarian Church with a seating capacity of 440

Size: 50 x 97 feet



Basement Floor Plan

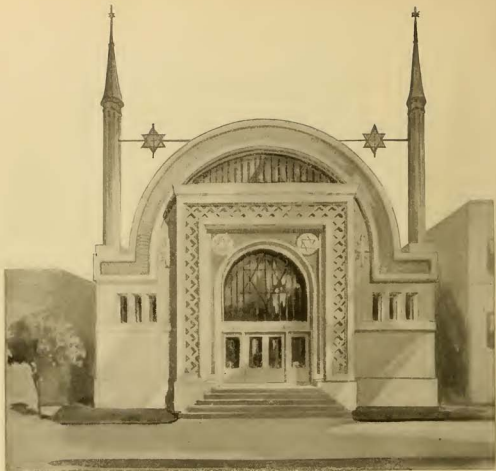
This two-story brick building is unusually well planned and has a fine modern exterior. Cost from about \$12,000 to \$15,000.

Price of Blue Printed Plans and Complete Set of Specifications,

\$75.00



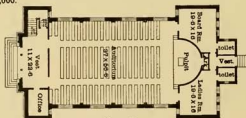
Main Floor Plan



Design No. 3022

Jewish Temple with a seating capacity of 390

An appropriate design for an inside 50 foot city lot. Auditorium is well lighted from the sides. Approximate cost from \$15,000 to \$20,000.



Floor Plan

Size: 50 x 96 feet

Price of Blue Printed Plans and Complete Set of Specifications,

\$200.00

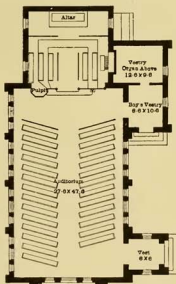


Design No. 3026

Episcopal Church with a seating capacity of 160

Size: 42 x 71 feet

A brick church trimmed with stone. A very attractive design and good plan. Approximate cost from \$9,000 to \$9,500.



Floor Plan

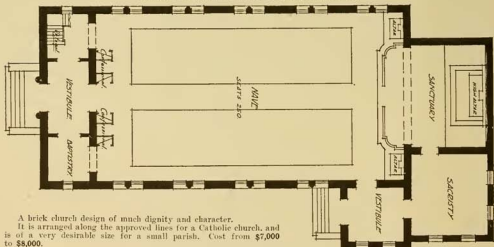
Price of Blue Printed Plans and Complete Set of Specifications,

\$80.00



Design No. 3060

Catholic Church with a seating capacity of 250



A brick church design of much dignity and character. It is arranged along the approved lines for a Catholic church, and is of a very desirable size for a small parish. Cost from \$7,000 to \$8,000.

Floor Plan

Size: 44 x 80 feet

Price of Blue Printed Plans and Complete Set of Specifications,

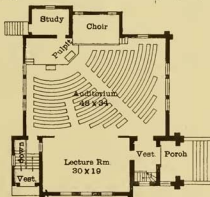
\$120.00



Design No. 3050

Congregational Church with a seating capacity of 215

A fine brick and stone building. Very imposing exterior and convenient floor plan. Cost from \$8,000 to \$9,000.



Floor Plan

Size: 58 x 65 feet

Price of Blue Printed Plans and Complete Set of Specifications.

\$150.00

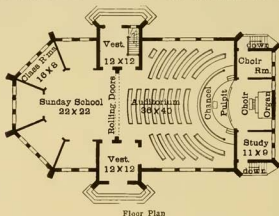


Design No. 3031

Methodist Church with a seating capacity of 150

Size: 42 x 81 feet

An unusually attractive design of brick with stone trimmings. Approximate cost from \$7,500 to \$8,000.



Price of Blue Printed Plans and Complete Set of Specifications,

\$80.00

EXCHANGING PLANS. If returned in good condition within 30 days we will exchange any set of plans, applying full price on any other set desired.

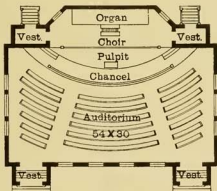


Design No. 3027

Methodist Church with a seating capacity of 200

Size: 56 x 47 feet

A modern brick building, with room for Sunday School in basement if so desired. Approximate cost \$7,500 to \$8,500.

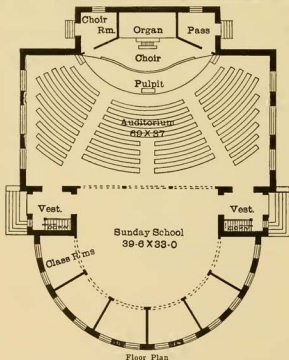


Floor Plan

Price of Blue Printed Plans and Complete Set of Specifications,

\$80.00

PLANS FROM YOUR OWN SKETCHES. Our skilled architects will prepare at lowest cost finished plans embodying your ideas. Write us for full particulars.



Design No. 3029

Presbyterian Church
with a seating capacity of 375

Size: 72 x 96 feet

A very imposing edifice with twin towers. To be built of brick and stone. Cost from \$15,000 to \$18,000.

Price of Blue Printed Plans and Complete Set of Specifications,

\$160.00

ALTERATIONS. We can change any plans to suit your requirements, at a reasonable extra charge depending on amount of work involved.

SPECIAL PLANS AFTER YOUR OWN SKETCHES

AT POPULAR PRICES

If you prefer to have a home constructed after your own ideas of arrangement, we would like very much to help you in developing your plans, or assist you in any way to solve the problem of a plan for your new home.

There are scores of people who spend years in planning and designing the home they wish to build, and, in many cases, never cease regretting that it does not come up to their requirements. "Home made" plans are inaccurate and cause endless worry, waste of materials and extra expense. With our long experience and with the equipment and the facilities we have for handling work of this kind, we can relieve you of the trouble and anxiety of planning your own home, save you time and money and furnish you with plans that we know will be entirely satisfactory. All we ask is an opportunity to demonstrate our ability to please you.



CORNER OF DRAFTING ROOM.

Our work is by no means confined to the designing and planning of houses, for, in addition to this class of work, we make a specialty of such work as:

Schoolhouses, Office Buildings, Bank Buildings, Factories, Town and Lodge Halls, Churches, Hotels, Public Libraries, Stores, Farm and Outbuildings and All Kinds of Public Buildings.

Our Special Department is the finest of its kind in the country, being under the personal supervision of Licensed Architects, who have experience in handling all kinds of work, and they have the assistance of a corps of competent draftsmen.

Our location, equipment, and facilities for handling work of all kinds cannot be excelled. Every plan we design or develop is guaranteed to be complete and accurate in every respect. We can get plans out in the quickest time possible and at a price that cannot help but interest you.

Our experience being of such long duration and our work extending over such a large territory, enables us to give you the most satisfactory results in every instance.

Our aim is to please you. Our whole organization is at your service. Consult us before purchasing your plan. We can save you money.

The Radford Architectural Company

178 W. Jackson Blvd.,
CHICAGO, ILL.

178 Fulton St.,
NEW YORK, N. Y.



Design No. 9518

Size: Width, 32 feet 6 inches; Length, 33 feet 6 inches

Blue prints consist of cellar plan; floor plan; attic plan; front, rear, two side elevations; wall sections and all necessary interior details. Specifications consist of twenty-two pages of typewritten matter.

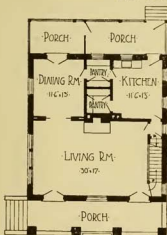
PRICE

of Blue Prints, together with a complete set of typewritten specifications

ONLY

\$20.00

We mail Plans and Specifications the same day order is received.



First Floor Plan



Second Floor Plan

ALTERATIONS. We can change any plans to suit your requirements, at a reasonable extra charge depending on amount of work involved.