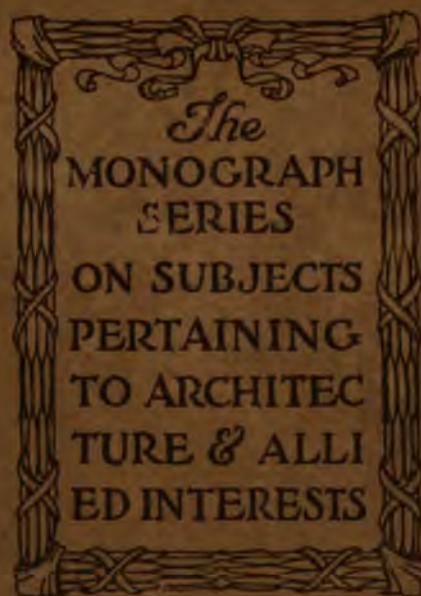


WF83
FR63
0

OLD COLONIAL BRICK HOUSES *of* NEW ENGLAND



Presented by
PUBLISHED BY ROGERS AND MANSON COMPANY
BOSTON NEW YORK





AN INDEX TO PLATE ILLUSTRATIONS

| | Page |
|--|--------------|
| Detail of the Henry Ladd House, <i>Portsmouth, N. H.</i> | Frontispiece |
| Cradock House, <i>Medford, Mass.</i> | 9, 11 |
| Hazen Garrison House, <i>Haverhill, Mass.</i> | 13, 15 |
| Richard Derby House, <i>Salem, Mass.</i> | 17, 19 |
| Hildreth House, <i>Concord, Mass.</i> | 21, 23 |
| Johnson House, <i>Newburyport, Mass.</i> | 25, 27 |
| Cutler Bartlett House, <i>Newburyport, Mass.</i> | 29, 31 |
| Samuel Fowler House, <i>Danvers, Mass.</i> | 33, 35 |
| House at <i>Danvers, Mass.</i> | 37, 39 |
| Mansfield-Bolles House, <i>Salem, Mass.</i> | 41, 43 |
| Gardner-White-Pingree House, <i>Salem, Mass.</i> | 45, 47 |
| Rice House, <i>Portsmouth, N. H.</i> | 49, 51 |
| Henry Ladd House, <i>Portsmouth, N. H.</i> | 53, 55 |



CRADOCK HOUSE, MEDFORD, MASS., BEFORE RESTORATION



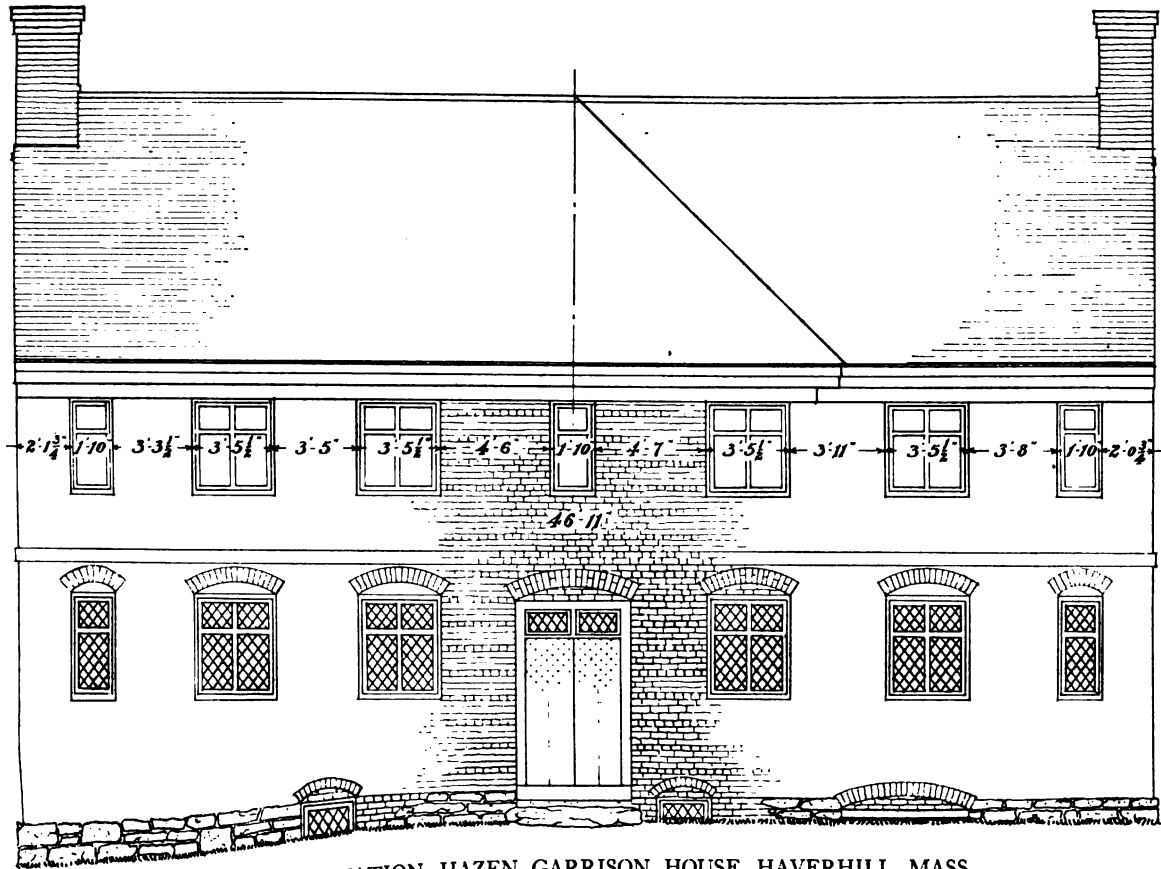
CRADOCK HOUSE, MEDFORD, MASS.
DATE UNKNOWN



FRONT ELEVATION, CRADDOCK HOUSE, MEDFORD, MASS.
 MEASURED AND DRAWN BY GEORGE H. HIGGINS AND EDWIN J. HIPKISS
 SCALE: ONE-EIGHTH INCH EQUALS ONE FOOT



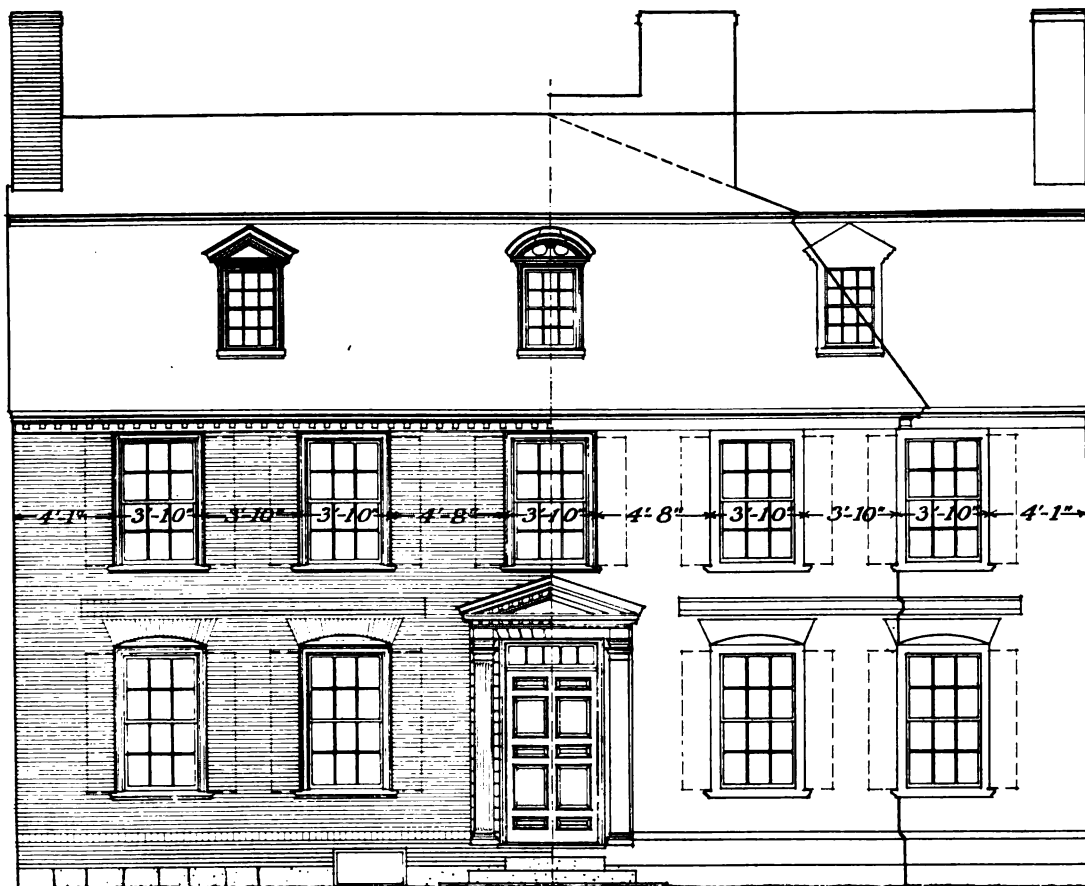
HAZEN GARRISON HOUSE, HAVERHILL, MASS.
BUILT BETWEEN 1880 AND 1890. VIEW MADE BEFORE RESTORATION



FRONT ELEVATION, HAZEN GARRISON HOUSE, HAVERHILL, MASS.
 MEASURED AND DRAWN BY GEORGE H. HIGGINS AND EDWIN J. HIPKISS
 SCALE: ONE-EIGHTH INCH EQUALS ONE FOOT



RICHARD DERBY HOUSE, SALEM, MASS.
BUILT IN 1761



FRONT ELEVATION, RICHARD DERBY HOUSE, SALEM, MASS.

MEASURED AND DRAWN BY GORDON ROBB

SCALE: ONE-EIGHTH INCH EQUALS ONE FOOT



HILDRETH HOUSE, CONCORD, MASS.
BUILT IN 1783



FRONT ELEVATION, HILDRETH HOUSE, CONCORD, MASS.
 MEASURED AND DRAWN BY GEORGE H. HIGGINS AND EDWIN J. HIPKISS
 SCALE: ONE-EIGHTH INCH EQUALS ONE FOOT



JOHNSON HOUSE, NEWBURYPORT, MASS.
BUILT ABOUT 1788



FRONT ELEVATION, JOHNSON HOUSE, NEWBURYPORT, MASS.
 MEASURED AND DRAWN BY GEORGE H. HIGGINS AND EDWIN J. HIPKISS
 SCALE: ONE-EIGHTH INCH EQUALS ONE FOOT



Photo. Copyright by Albert Hale

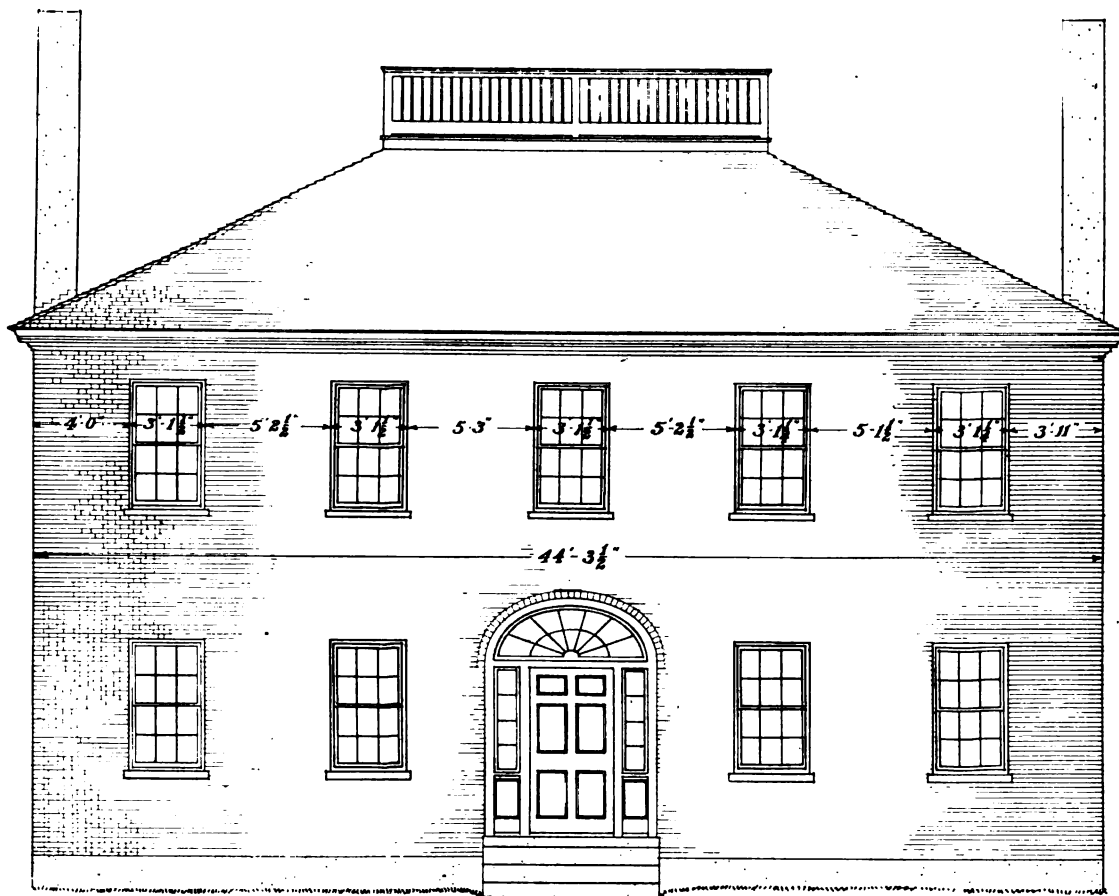
CUTLER BARTLETT HOUSE, NEWBURYPORT, MASS.
BUILT IN 1782



FRONT ELEVATION, CUTLER BARTLETT HOUSE, NEWBURYPORT, MASS.

MEASURED AND DRAWN BY GEORGE H. HIGGINS AND EDWIN J. HIPKISS

SCALE: ONE-EIGHTH INCH EQUALS ONE FOOT



FRONT ELEVATION, SAMUEL FOWLER HOUSE, DANVERS, MASS.
 MEASURED AND DRAWN BY GEORGE H. HIGGINS AND EDWIN J. HIPKISS
 SCALE: ONE-EIGHTH INCH EQUALS ONE FOOT



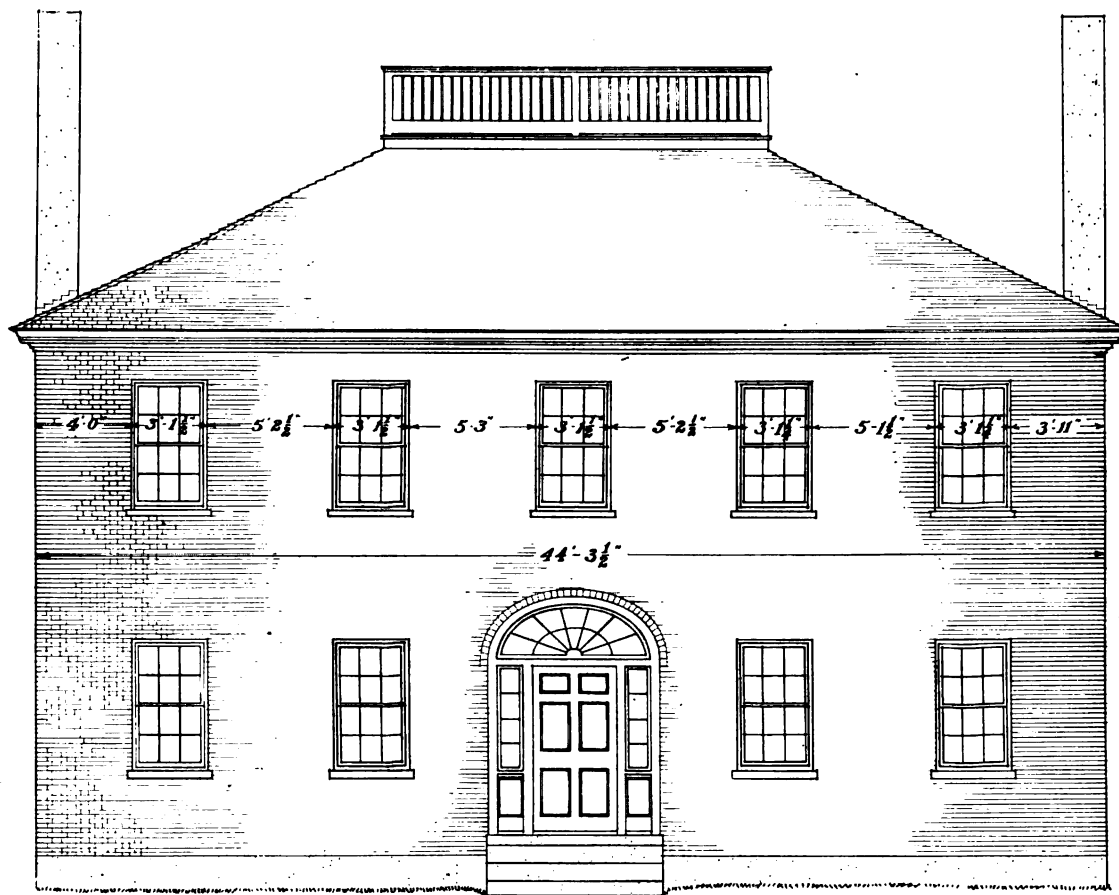
HOUSE AT DANVERS, MASS.
DATE UNKNOWN



FRONT ELEVATION, HOUSE AT DANVERS, MASS.

MEASURED AND DRAWN BY GORDON ROBB

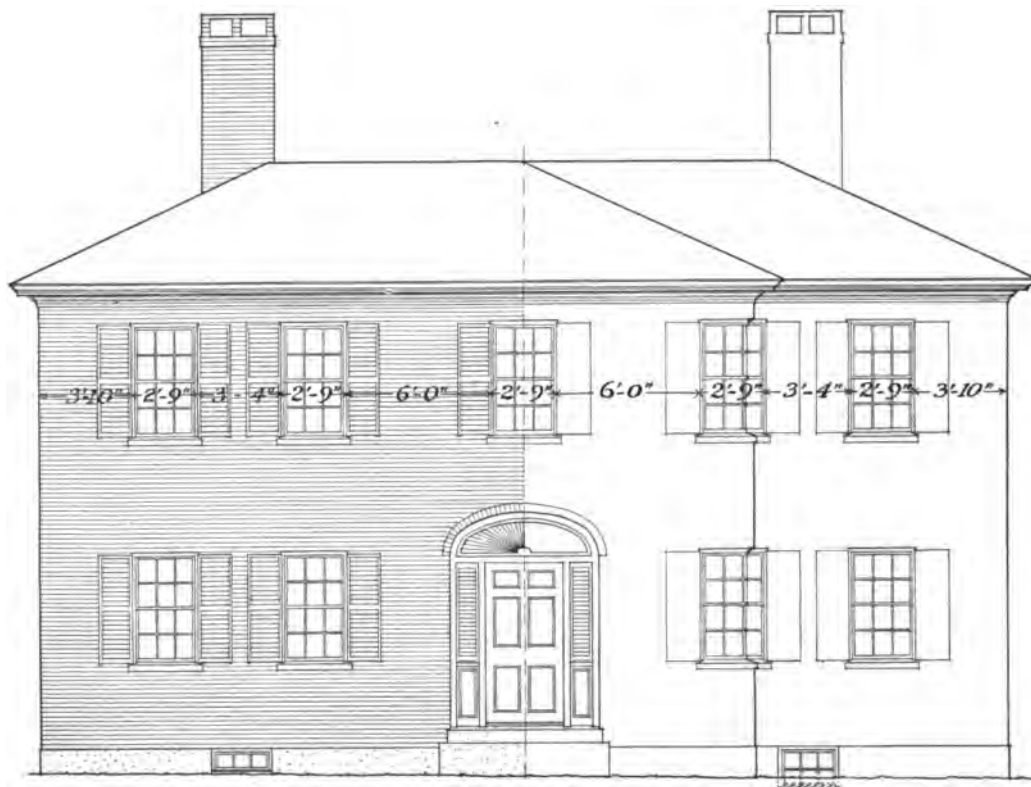
SCALE: ONE-EIGHTH INCH EQUALS ONE FOOT



FRONT ELEVATION, SAMUEL FOWLER HOUSE, DANVERS, MASS.
 MEASURED AND DRAWN BY GEORGE H. HIGGINS AND EDWIN J. HIPKISS
 SCALE: ONE-EIGHTH INCH EQUALS ONE FOOT



HOUSE AT DANVERS, MASS.
DATE UNKNOWN



FRONT ELEVATION, HOUSE AT DANVERS, MASS.

MEASURED AND DRAWN BY GORDON ROBB

SCALE: ONE-EIGHTH INCH EQUALS ONE FOOT



MANSFIELD HOUSE, 1855, 1856, 1857
1855, 1856, 1857



FRONT ELEVATION, MANSFIELD-BOLLES HOUSE, SALEM, MASS.

MEASURED AND DRAWN BY GORDON ROBB

SCALE: ONE-EIGHTH INCH EQUALS ONE FOOT



GARDNER-WHITE-PINGREE HOUSE, SALEM, MASS.
BUILT ABOUT 1810. SAMUEL McINTIRE, ARCHITECT



MANSFIELD-BOLLES HOUSE, SALEM, MASS.
BUILT ABOUT 1796



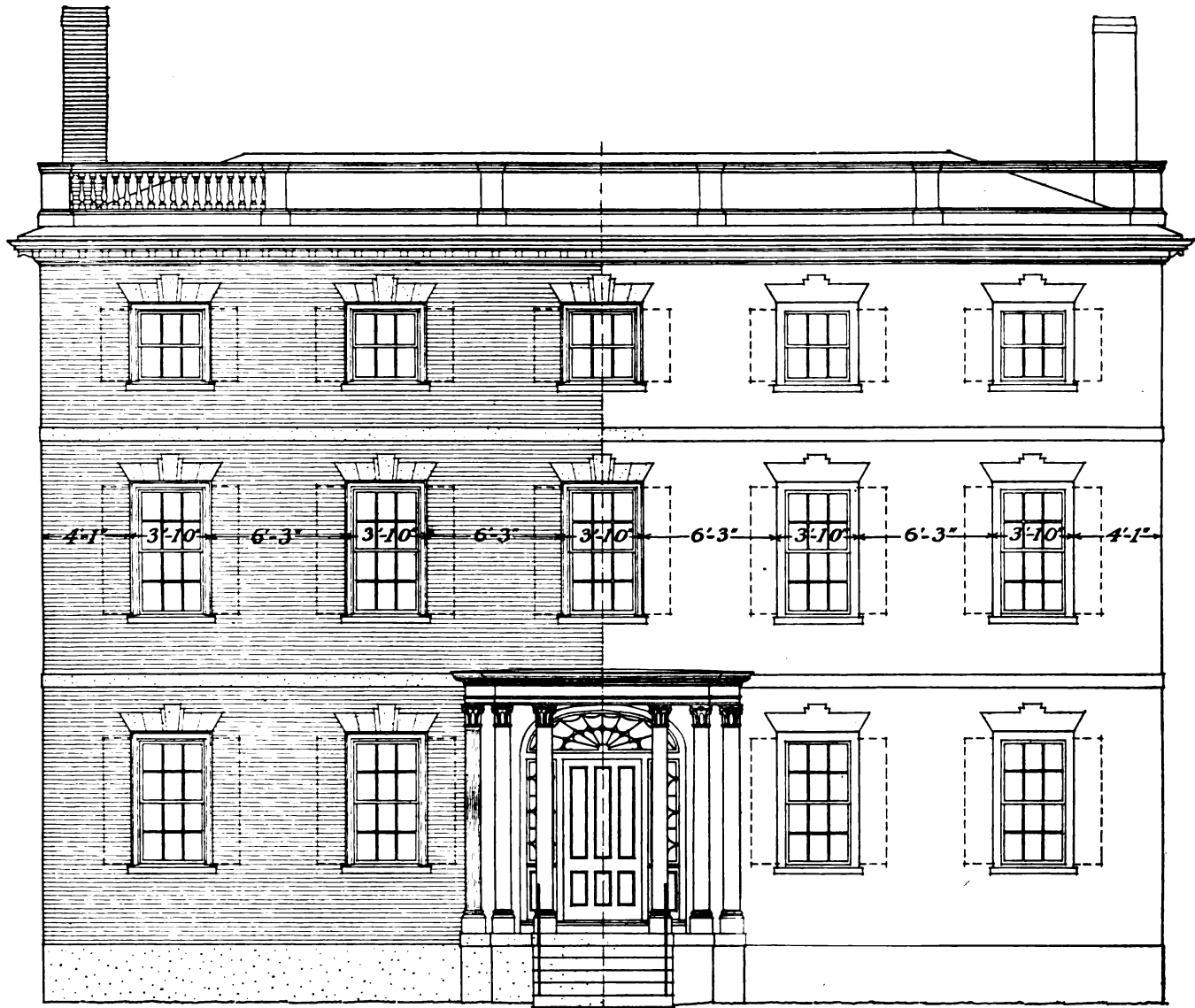
FRONT ELEVATION, MANSFIELD-BOLLES HOUSE, SALEM, MASS.

MEASURED AND DRAWN BY GORDON ROBB

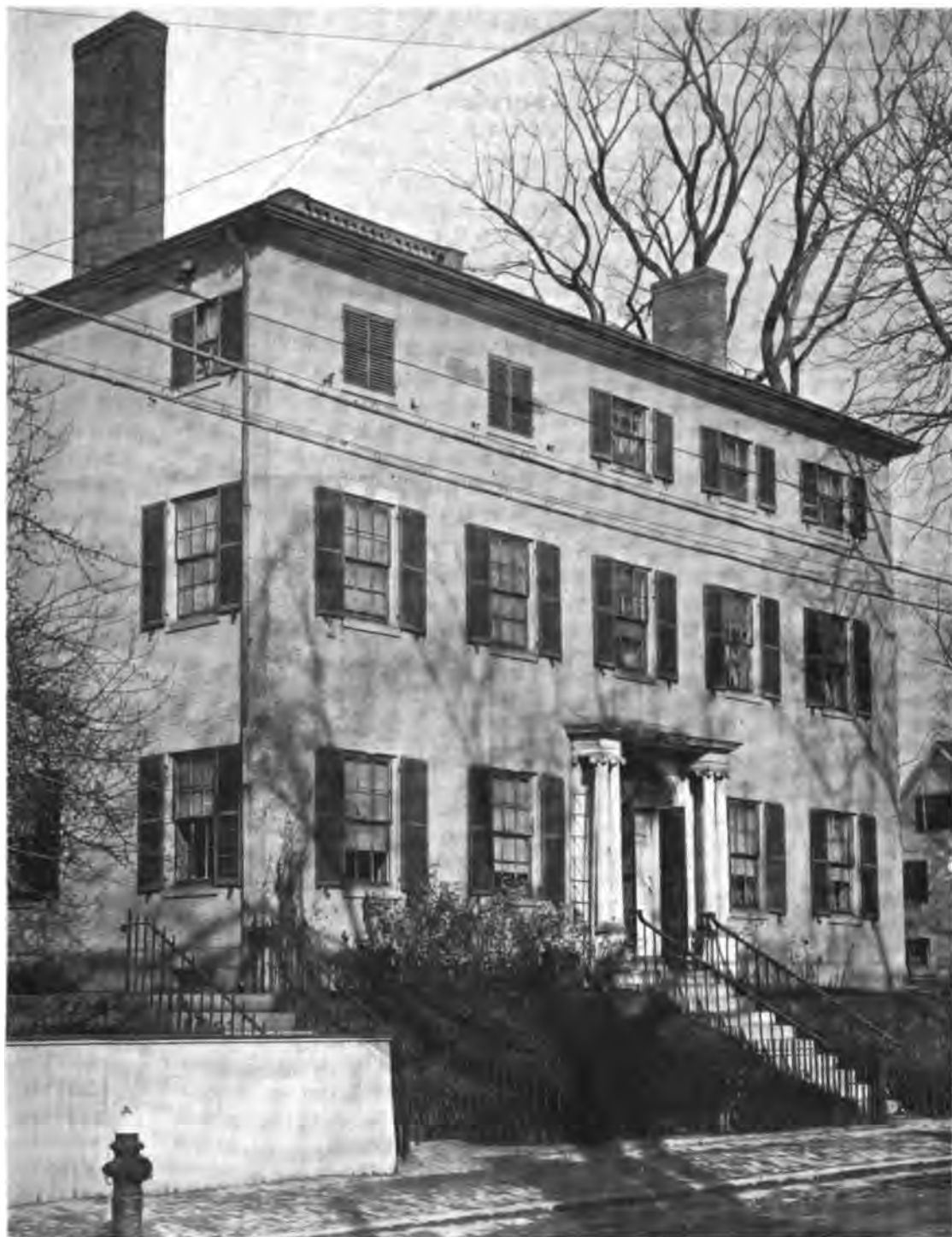
SCALE: ONE-EIGHTH INCH EQUALS ONE FOOT



GARDNER-WHITE-PINGREE HOUSE, SALEM, MASS.
BUILT ABOUT 1810. SAMUEL McINTIRE, ARCHITECT

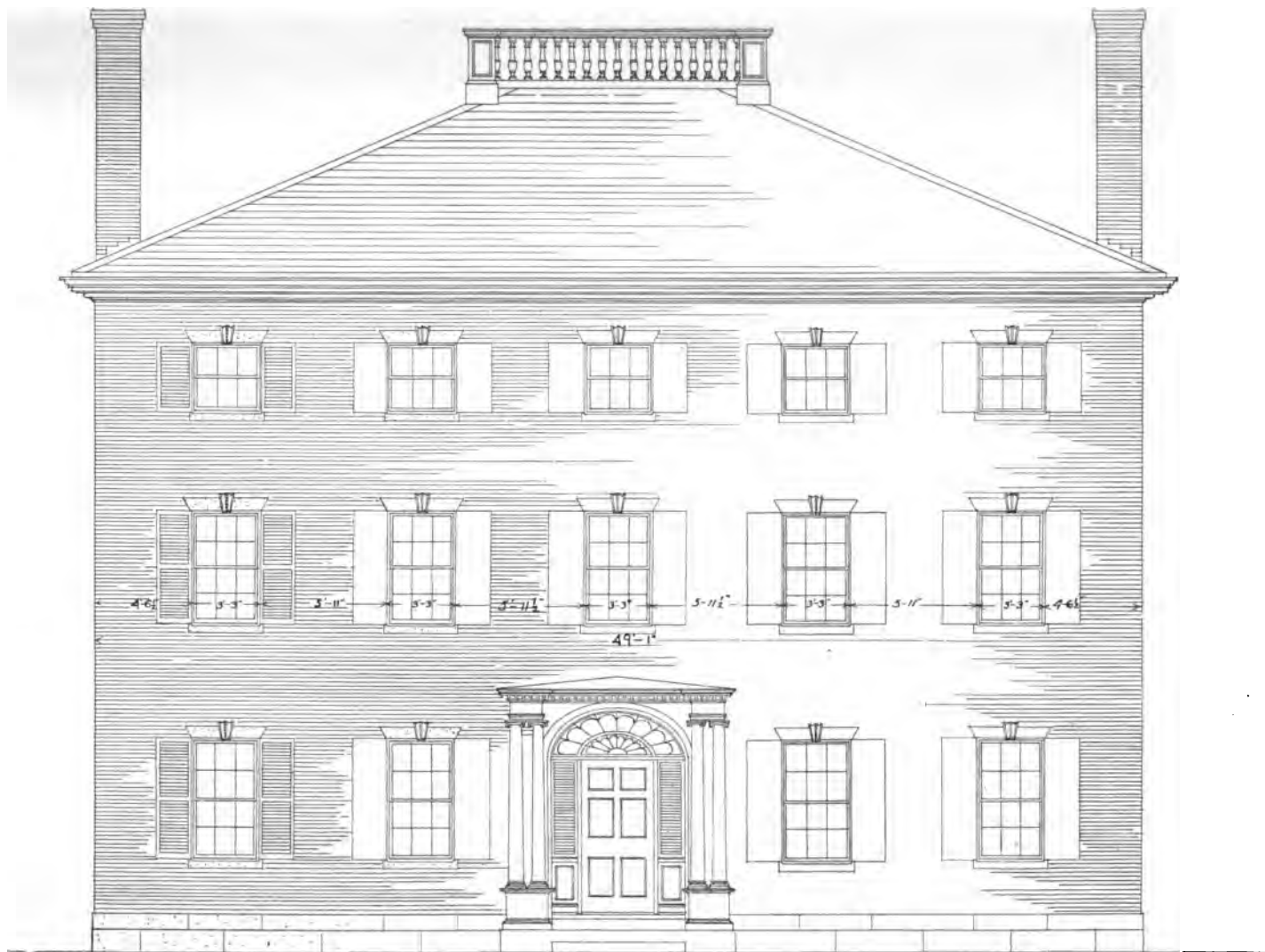


FRONT ELEVATION, GARDNER-WHITE-PINGREE HOUSE, SALEM, MASS.
 SAMUEL McINTIRE, ARCHITECT. MEASURED AND DRAWN BY GORDON ROBB
 SCALE: ONE-EIGHTH INCH EQUALS ONE FOOT



RICE HOUSE, PORTSMOUTH, N. H.

DATE UNKNOWN

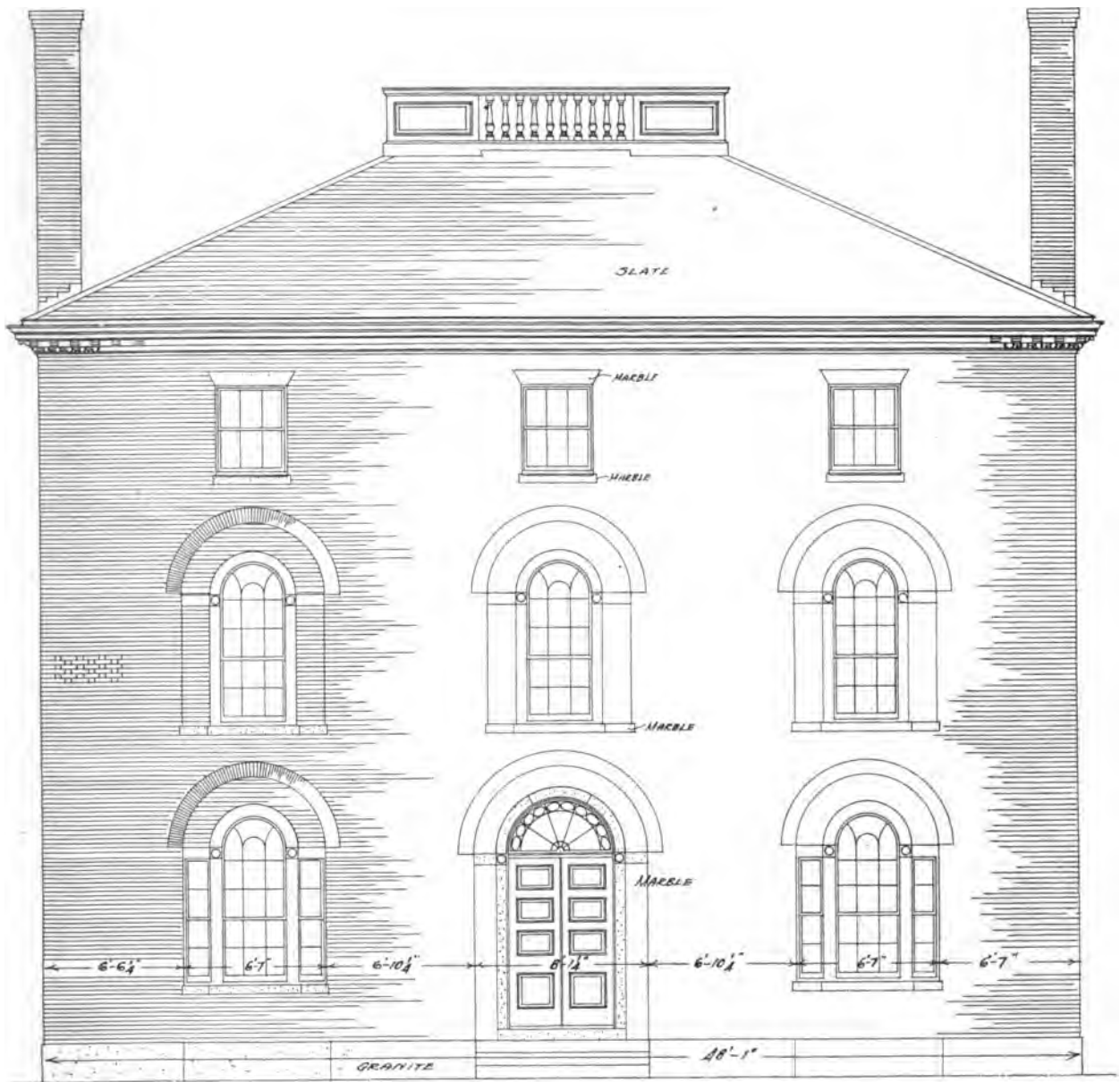


FRONT ELEVATION, RICE HOUSE, PORTSMOUTH, N. H.
 MEASURED AND DRAWN BY GEORGE H. HIGGINS AND EDWIN J. HIPKISS
 SCALE: ONE-EIGHTH INCH EQUALS ONE FOOT



HENRY LADD HOUSE, PORTSMOUTH, N. H.
BUILT ABOUT 1815

OLD COLONIAL BRICK HOUSES OF NEW ENGLAND



FRONT ELEVATION, HENRY LADD HOUSE, PORTSMOUTH, N. H.
 MEASURED AND DRAWN BY GEORGE H. HIGGINS AND EDWIN J. HIPKISS
 SCALE: ONE-EIGHTH INCH EQUALS ONE FOOT