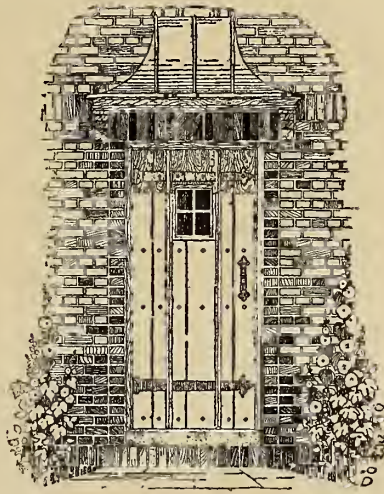


The HOME OF BEAUTY

*A Collection of Architectural
Designs for Small Houses Submitted
in Competition by Architects and
Architectural Draftsmen and
Selected from Four Hundred
for their Merit*

1921



PRICE FIFTY CENTS

THE AMERICAN FACE BRICK ASSOCIATION
110 SOUTH DEARBORN STREET, CHICAGO, ILLINOIS

NA7150
.A47
1921

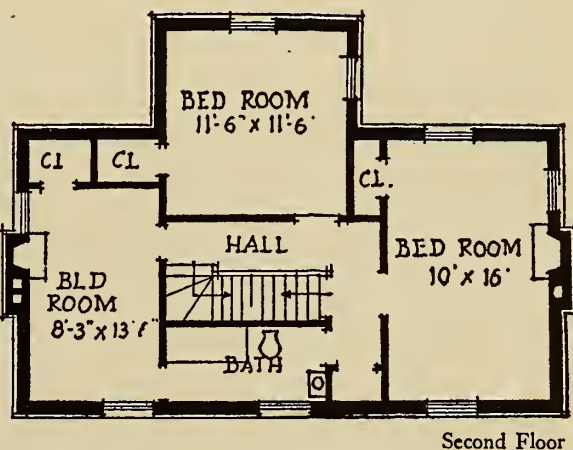
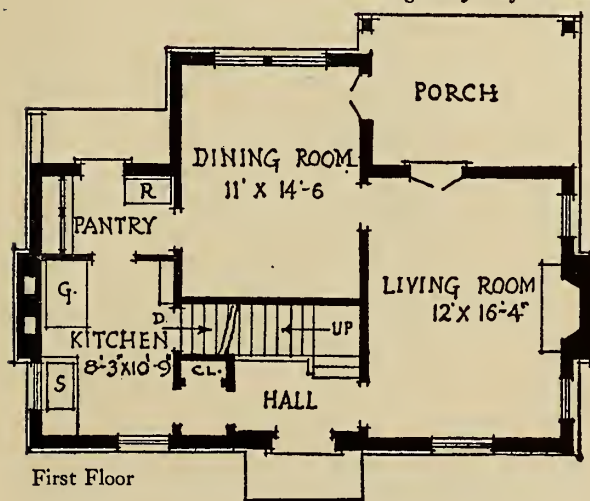


CRADOCK HOUSE, MEDFORD, MASS.
BUILT IN 1632

THIS charming old house was built for Governor Cradock of the Massachusetts Bay Colony. It is one of the oldest dwellings in the original portion of the United States. For nearly three hundred years it has withstood the ravages of time and weather and is today a comfortable home and a living monument to the durability of brick as a building material.



HOUSE No. 101, FIRST PRIZE

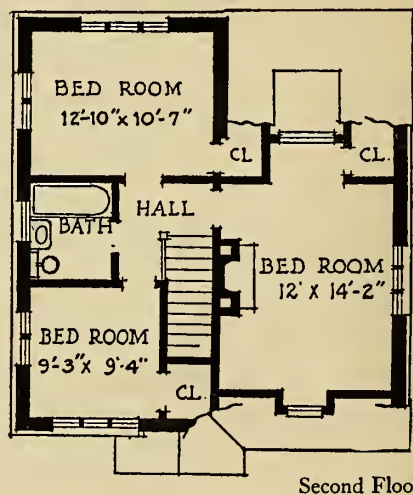
Designed by Olaf William Shelgren, Buffalo, N. Y.

THIS simple, formal house would fit admirably on a lot with a frontage of 50 ft. It should preferably face the west, affording morning sun in the dining room and southern exposure for the living room. The kitchen has a window overlooking the street, making it a pleasant work-

place. The low shrub planting along the front of the house adds greatly to its homelike qualities. The porch faces the garden. The dimensions of the house are 28 ft. by 34 ft. The height of the first floor rooms is 8 ft. 2 in. and of the second, 8 ft. Both floors have rooms of good size.



HOUSE No. 102, SECOND PRIZE

Designed by Floyd Yewell, New York, N. Y.

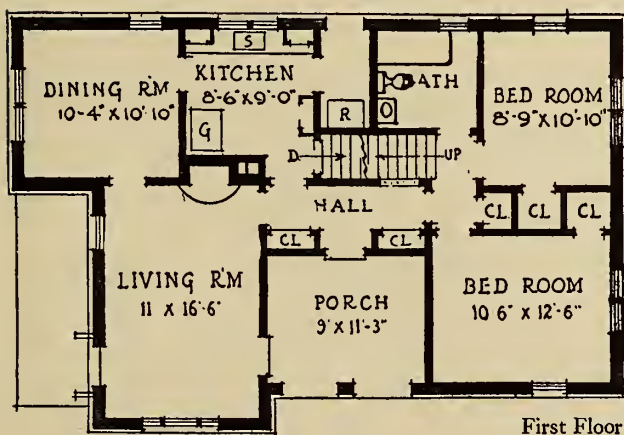
THIS house is most charming and picturesque in its design, and is a good solution of the problem of getting beauty into the small house. The interior is just as distinctive as the exterior; the living room is nicely proportioned and is very well lighted with attractive groups of windows. The house is fitted to either an inside or corner lot location, and can face the street as shown in the illustration, or the long side of the living

room may be toward the street. In either arrangement the entrance should face the west to get the best exposure for the principal rooms. The kitchen is placed on the northwest corner, and the rear arranged for a garden development to be enjoyed from the porch. The dimensions of the house are 27 ft. by 32 ft. The height of the first floor rooms is 8 ft. and of the second, 7 ft. 6 in. Both floors are conveniently arranged.

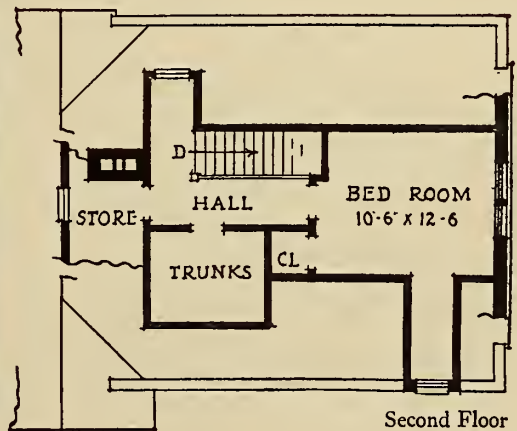


HOUSE No. 103, THIRD PRIZE

Designed by E. J. Maier, T. E. King and G. H. Erard, Toledo, O.



First Floor



Second Floor

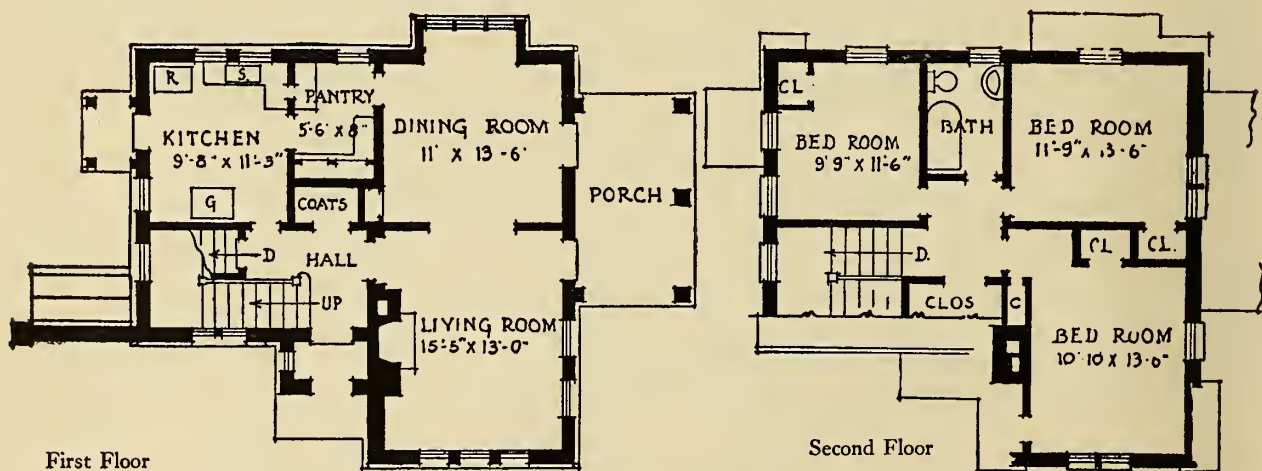
BUNGALOWS have suffered more, perhaps, from poor design than any other type of house and the number of ugly ones is legion. The charm of the one illustrated here, however, is such as to make one wish that all houses were bungalows if they could be as attractive as this. Placed on a gently rising slope with a curving path to the porch, this house would have a picturesque quality difficult to equal. It is eminently suited to the country and would look well

in a suburban location, though it would need a good sized plot to enable its full beauty to be seen. Its dimensions are 29 ft. by 43 ft. It could occupy a 60 x 100 ft. corner lot, with the entrance on the long frontage. A garage is suggested in the illustration tied into the house by a brick wall. In this arrangement the garden and lawn would be at the opposite end with a terrace outside the living room windows. The ceiling height is 8 ft. The entrance side should face south.



HOUSE No. 104, FOURTH PRIZE

Designed by Halsey B. Horner, Boston, Mass.



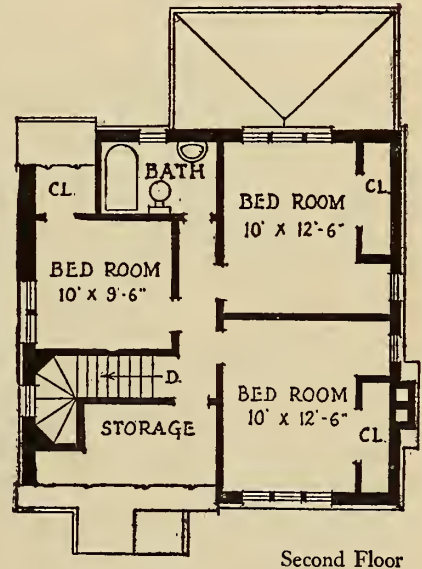
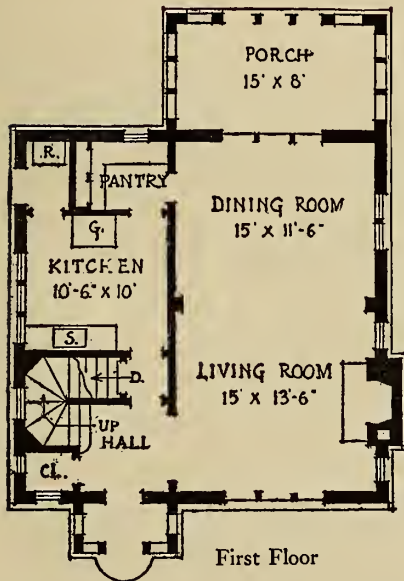
THIS house shows a very compact and practical floor plan. The hall is attractive with a large window lighting the stairs. The kitchen is conveniently arranged and connected with the dining room by a large pantry. The exterior of the house is very pleasing and picturesque. It could occupy any site, fitting a sloping lot equally as well as a level one, and it has the further

advantage of affording a choice of positions with reference to street frontage. It is planned to have the side with the porch face the south in order to give morning sun in the dining room and kitchen and pleasant exposure to the living room. The dimensions of the house are 44 ft. by 31 ft. The height of the first floor ceiling is 8 ft. 3 in. and the second, 7 ft. 6 in.



HOUSE No. 105, MENTION

*Designed by Albert M. Pyke and
Charles F. Pyke
Indianapolis, Ind.*



IN a small house it is often desirable to have a larger space than the usual room provides and this is recognized in this plan in making the dining and living rooms practically one, giving a room 15 ft. wide and 25 ft. long. If desired, this could be furnished as a living room, the dining table at other than meal times serving as

a library table. With the porch opening from the room and groups of windows at each end, it would give the appearance of a large house, all in very small space, actually. The dimensions of the house are 27 ft. 4 in. by 40 ft. and the ceiling heights 8 ft. 6 in. and 8 ft. for first and second floors. The house should face west.

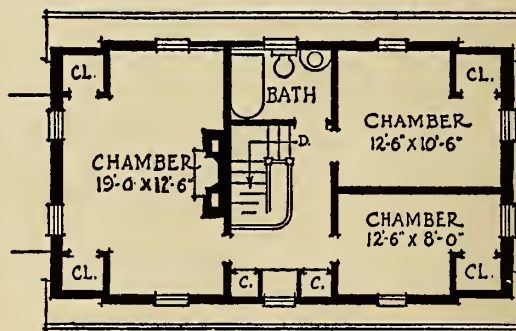


HOUSE No. 106, MENTION

Designed by John Barnard, Boston, Mass.



First Floor



Second Floor

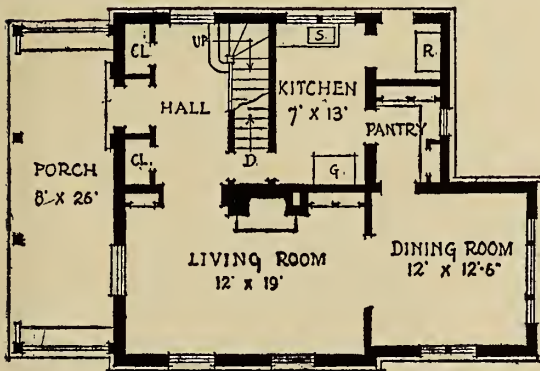
DUTCH Colonial, which always gives a homelike character, is used to advantage in the design of this house. It is intended for a corner lot, or one having a frontage of 60 ft. or more. On a corner lot a garage could be placed at the dining room end of the house, with a covered walk leading to it that would balance the porch on the other end of the house. The lower story of the front is especially charming because of the nice relation between the bay windows and the fan-light doorway. The interior is planned to give the appearance of a large

house with the principal rooms on either side of the hall. The kitchen is conveniently arranged and connected with the dining room by a pantry. The sink is placed in a bay window similar to those on the front of the house, insuring ample light and a pleasant place to work. The space at the left of the kitchen would serve admirably for a breakfast corner. The dimensions of the house are 46 ft. by 24 ft. and the heights of the first and second floors are 8 ft. and 7 ft. 8 in., respectively. The front should face southeast to insure sunny, pleasant rooms.

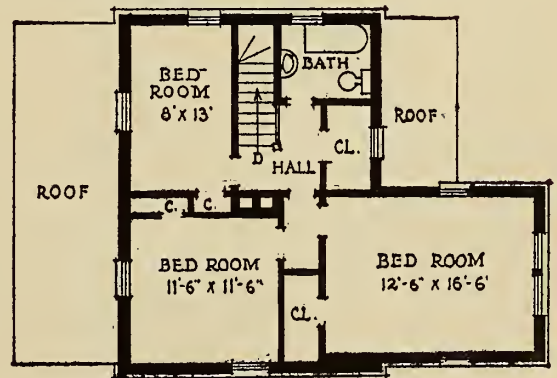


HOUSE No. 107, MENTION

Designed by J. Ivan Dize, Detroit, Mich.



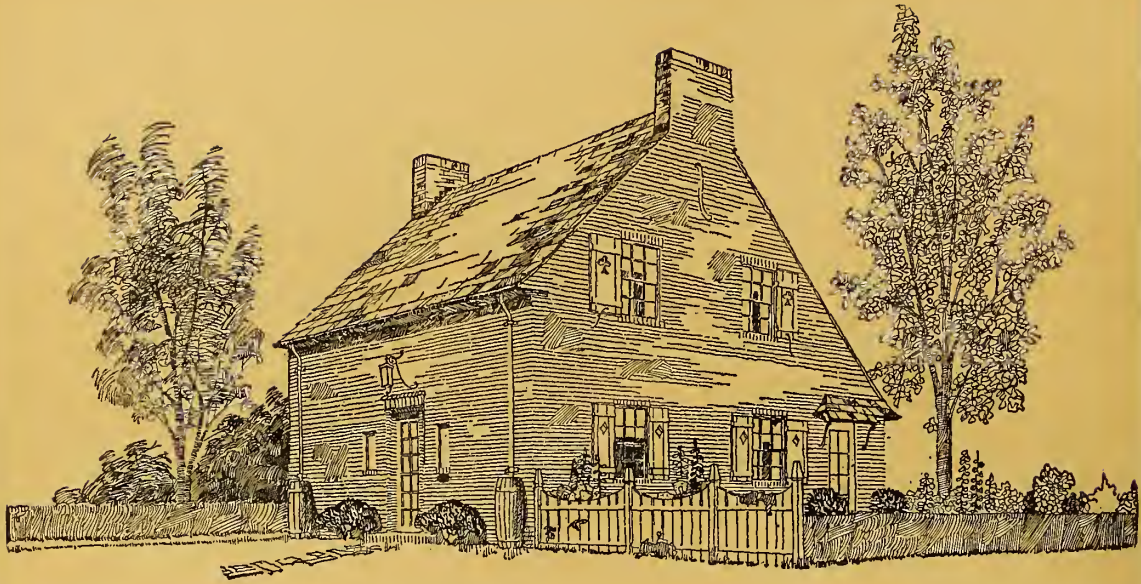
First Floor



Second Floor

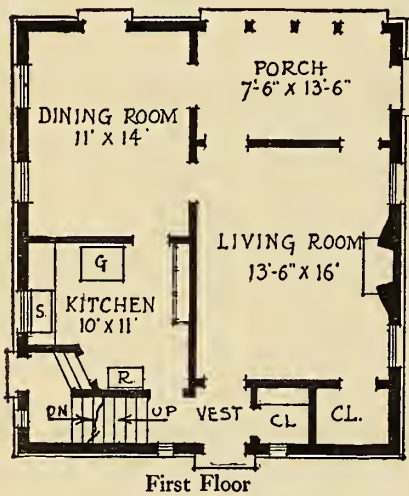
THIS house is extremely simple in its design and would make an attractive and practical home. The porch extends across the front, with the assumption that the best outlook would be toward the street. For this reason, the house should set back a good distance from the street and a hedge would be advisable at the property line to afford privacy. The front should face west, thus giving morning sun in the dining room and a southern exposure to the living room. The plan shows a generous entrance hall, a good

sized living room, with the dining room opening from it. The kitchen is compact and there is a large pantry and convenient kitchen vestibule with space for a refrigerator. The second floor has two large bedrooms and a child's room and is well equipped with closets. The dimensions of the house are 41 ft. 6 in. by 26 ft. It would easily fit an inside lot of 50 ft. frontage, leaving ample space at the kitchen side for a drive to a garage. The ceiling height of the first floor is 8 ft. 2 in. and of the second, 7 ft. 6 in.

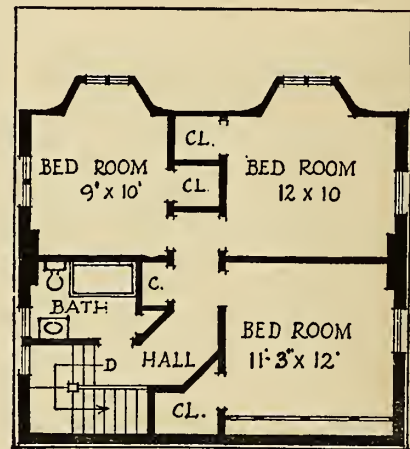


HOUSE No. 108, MENTION

Designed by George H. Van Anda, New York, N. Y.



First Floor



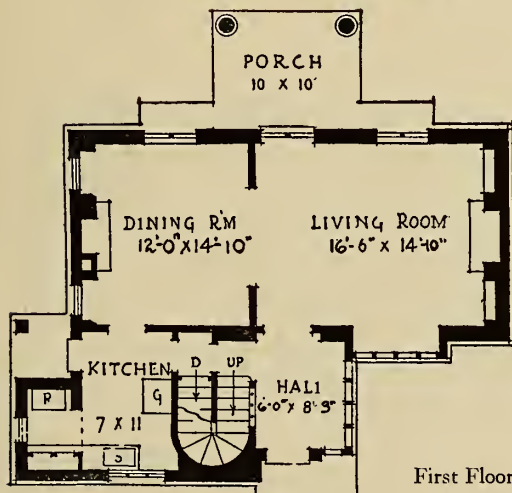
Second Floor

THERE are very pleasing proportions and attractive roof lines in this design. The house is extremely simple and would for that reason be inexpensive to build. It is designed for an inside lot of narrow frontage with the street exposure toward the north. All the rooms are lighted from the sunny sides which would make them pleasant to live in, and in omitting the windows on the front, except for two small ones either side of the door, an individual charac-

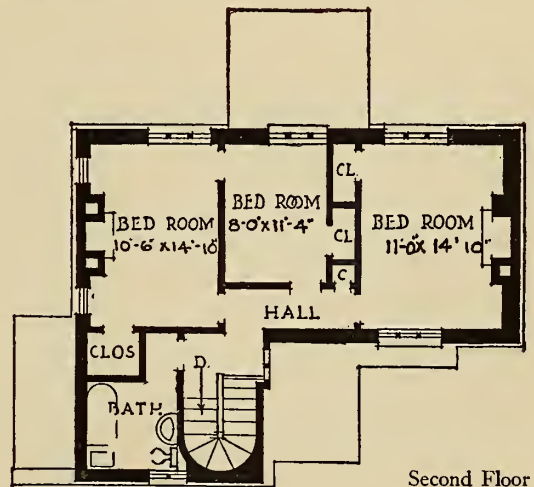
ter has been given the house. The house could be placed close to the street and the rear of the lot reserved for garden and lawn with a drive on the left side to a garage in the rear. The dimensions of the house are 26 ft. 8 in. by 30 ft. The height of the first floor rooms is 7 ft. 10 in., and of the second, 8 ft. The second floor is well supplied with closets, and in the front bedroom the low space along the front wall is utilized for drawers and cupboards.



HOUSE No. 109, MENTION

Designed by A. S. Crapsey, New York, N. Y.

First Floor



Second Floor

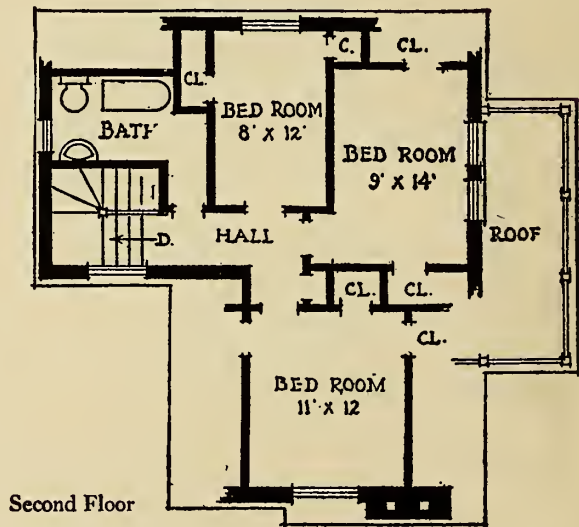
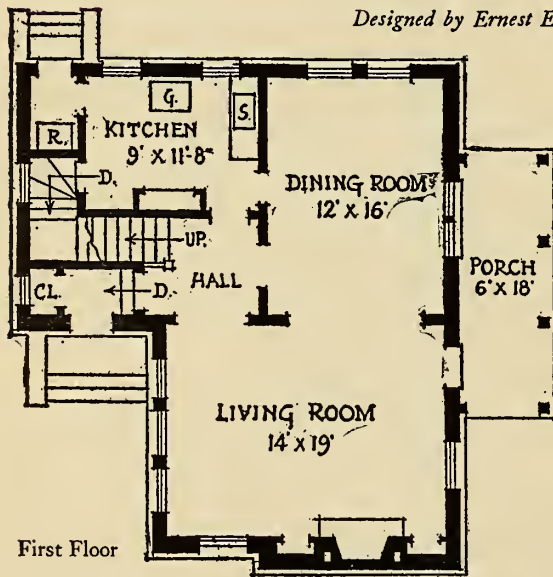
FOR a small country house it would be difficult to find anything more charming than the simplicity of this design. The large wall surfaces would give dignity to the brickwork and the grouping of the casement windows suggests comfortable, homelike rooms within. The plan is designed to give the greatest possible effect of space in a small house. The living room and dining room extend across the rear, which should face the south and a garden, to carry out the

thought of the designer. This will provide two rooms that will be very livable and altogether charming. The entrance hall is unique with one side composed entirely of windows. The kitchen is compact and conveniently placed with respect to the dining room and entrance hall. The dimensions of the house are 38 ft. 6 in. by 35 ft. 3 in. and the story heights 8 ft. and 7 ft. 6 in. for first and second floors respectively. Construction is simple and comparatively inexpensive.



HOUSE No. 110, MENTION

Designed by Ernest E. Weibe, San Francisco, Cal.



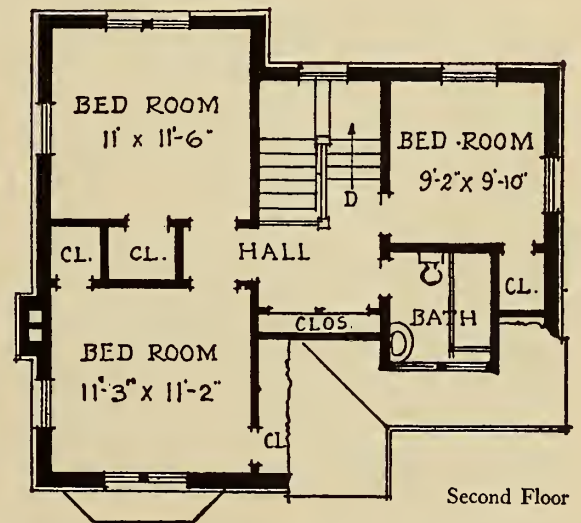
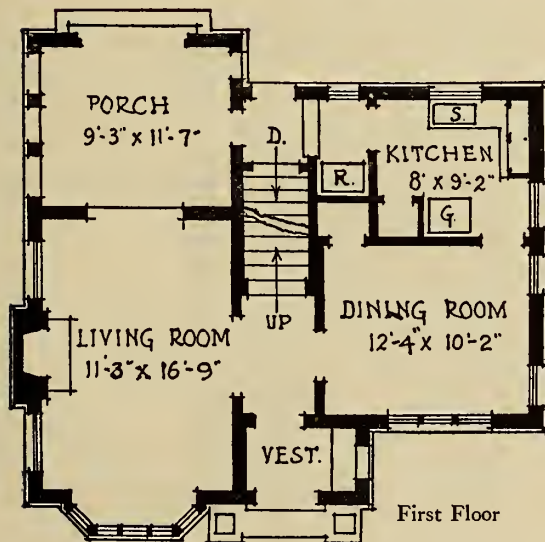
THE first floor arrangement of this house is especially convenient. All the rooms are reached from the hall, and the dining room and living room are connected with a wide opening which increases the apparent size of the house. It can be placed on an inside lot of 50-ft. frontage with space at the left for a drive to a garage in

the rear. The garden development should be on the porch side and in the rear. The front of the house should face west or south to provide the best exposures for the principal rooms. The dimensions are 36 ft. by 34 ft. and the ceiling heights are 8 ft. 2 in. and 8 ft. 5 in. for the first and second floors, respectively.



HOUSE No. 111

Designed by Jefferson M. Hamilton, Minneapolis, Minn.



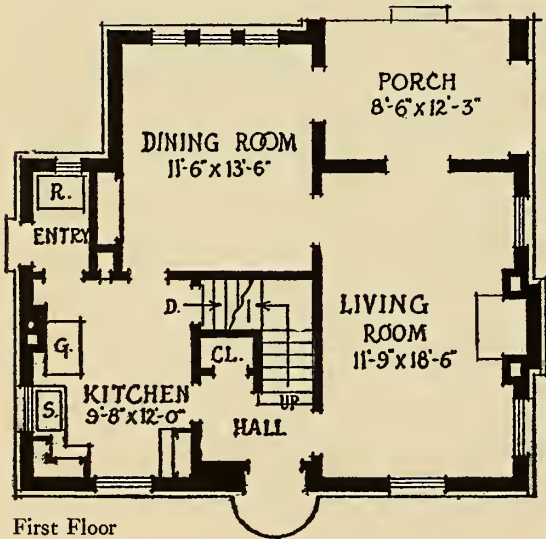
THIS attractive little house is derived from English precedent and is so arranged on both floors as to give a sense of space. There is a large porch, which, if glazed, can be used to increase the size of the living room; it is connected directly with the kitchen so that it may be ideally used for meals during the summer months. The

house would look equally well on a corner or an inside lot of 50-ft. frontage. The front should face east. The dimensions of the house are 30 ft. by 30 ft. and the ceiling height is 8 ft. 5 in. for the first story and 8 ft. for the second. Brick of varied color tones are suggested, the darkest shade forming the diaper pattern.

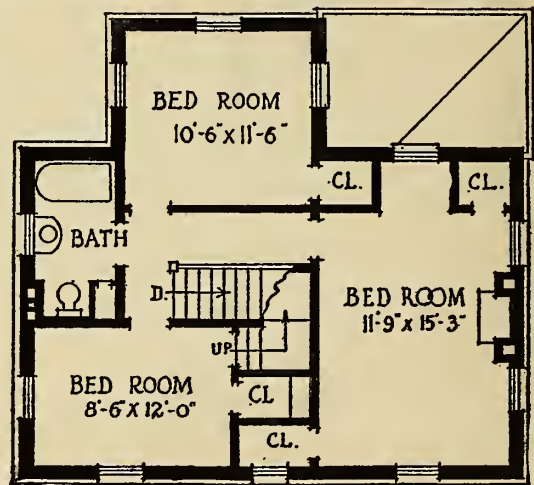


HOUSE No. 112

Designed by Emery J. Obler, Dayton, O.



First Floor



Second Floor

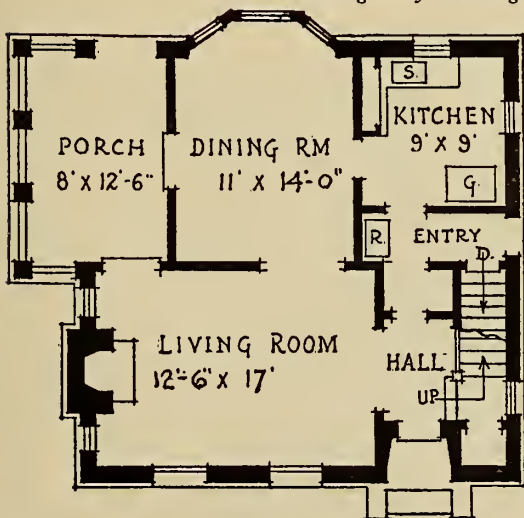
A SIMPLE type of brick Colonial house that would adapt itself well to any suburban location. It should be placed near the street with the rear reserved for a garden and lawn. The front should face west, thereby giving a southern exposure to the living room and eastern to the dining room. The kitchen has a window over-

looking the street and is well placed with respect to the dining room and entrance hall. The bedrooms are of good size and well equipped with closet space. The dimensions of the house are 30 ft. 6 in. across the front, and 28 ft. 6 in. deep. The ceiling height of the first floor rooms is 8 ft. 2 in. and of the second, 8 ft. 7 in.

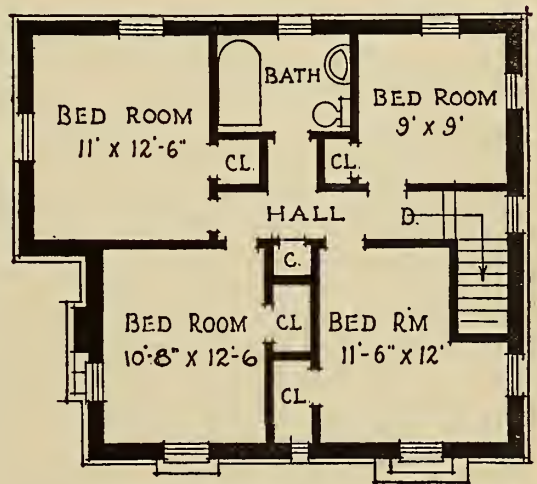


HOUSE No. 113

Designed by Ed. Berg and Stan. Pennock, Utica, N. Y.



First Floor



Second Floor

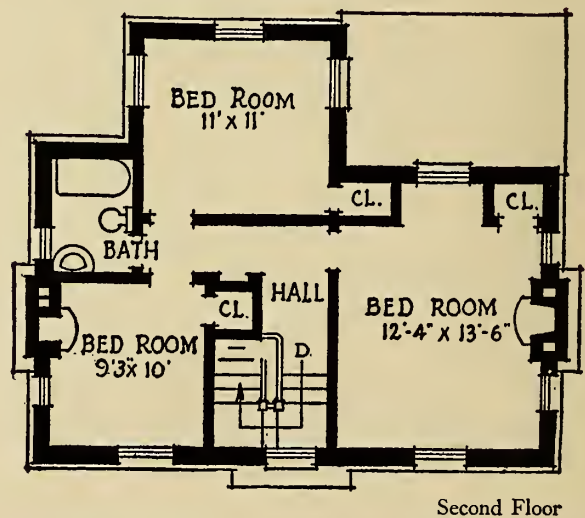
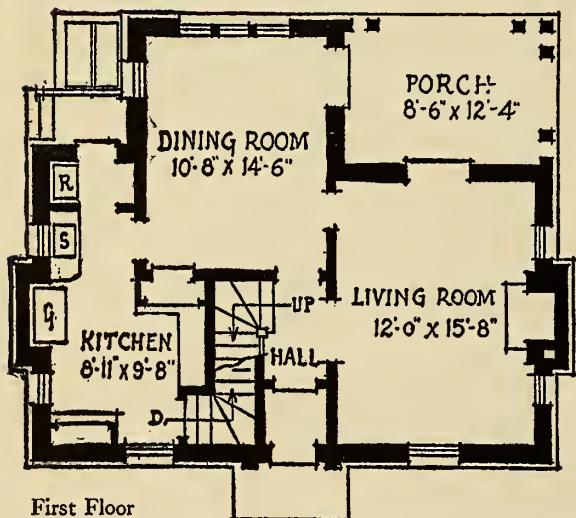
THIS house has a dignity in its design that makes it particularly suited to brick construction. It would look well in a suburban location and would fit a corner or inside lot of 50-ft. frontage. The front should face east or south-east. A terrace along the front with the large living room windows opening onto it would be

an attractive feature. The garden, if on a corner lot, could be at the left opposite the porch, or at the rear, if an inside lot is selected. The first floor rooms are nicely grouped and the glazed porch is attractive viewed from either living room or dining room. The dimensions of the house are 27 ft. by 31 ft., and both floors are 8 ft. 2 in. high.



HOUSE No. 114

Designed by E. P. Crocheron and L. T. Hazard, New York, N. Y.



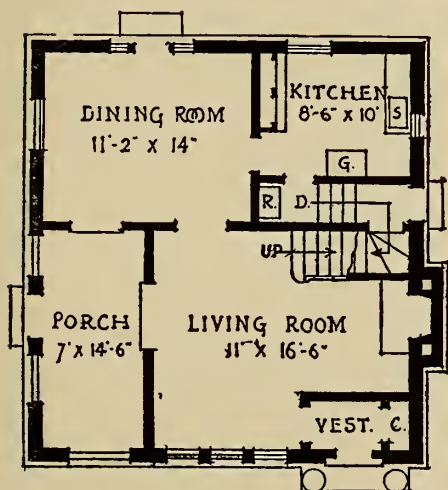
THIS house has a dignified Colonial doorway as its principal exterior feature. It is well suited to a suburban plot of 50-ft. frontage and can be placed near the street with the rear reserved for a lawn and garden treatment where privacy may be enjoyed. The kitchen is con-

veniently arranged and is equipped with built-in dressers instead of having a separate pantry. A window facing the street insures a pleasant outlook. The house is 31 ft. across the front and 26 ft. 6 in. deep. The first story is 8 ft. 2 in. high and the second, 8 ft. The front should face west.

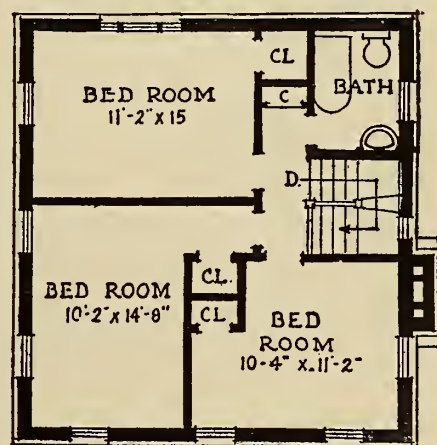


HOUSE No. 115

Designed by Christian F. Rosberg, New York, N. Y.



First Floor



Second Floor

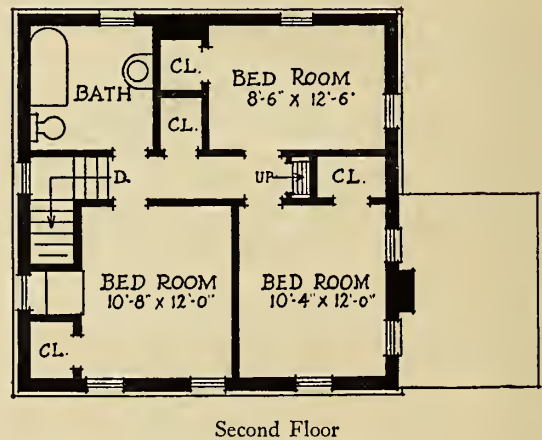
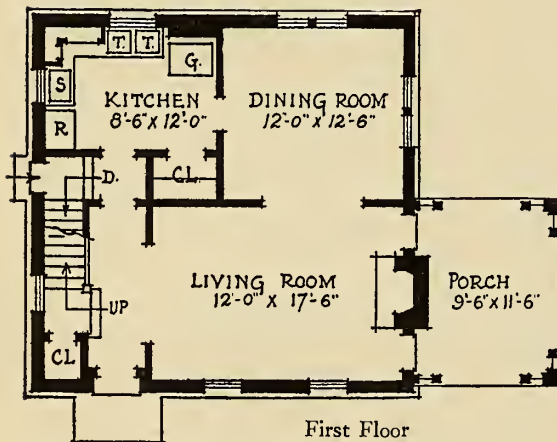
THE entrance to this house is directly into the living room, but an ample vestibule with coat closet would shut off drafts in cold weather. The staircase starts from the living room, and with the vestibule, frames an angle nook about the fireplace that would make a pleasant feature.

The porch overlooks the street and side lawn. Additional lawn and garden could be had in the rear in line with the dining room windows. The dimensions of the house are 26 ft. 4 in. by 28 ft. 4 in. The ceiling heights are 8 ft. for both floors. The front should face east or south.



HOUSE No. 116

Designed by F. Keally and O. Staiber, New York, N. Y.



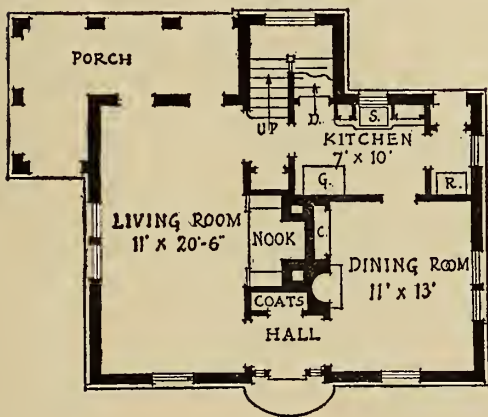
THIS little house would be charming in its simplicity set well back from the street with an ample lawn. It could be set close to the lot line on the left to allow space for some garden treatment around the porch at the right. The plan is very compact on both floors and the principal rooms of the first floor are arranged to give as great a sense of space as possible. The

kitchen is convenient, and supplied with closets and built-in dresser instead of a separate pantry. The dimensions of the house are 36 ft. 8 in. across the front and 26 ft. deep. The ceiling height of the first floor is 8 ft. and of the second, 7 ft. 6 in. The house could be built inexpensively because of its compact plan and general simplicity. The front should face southwest.

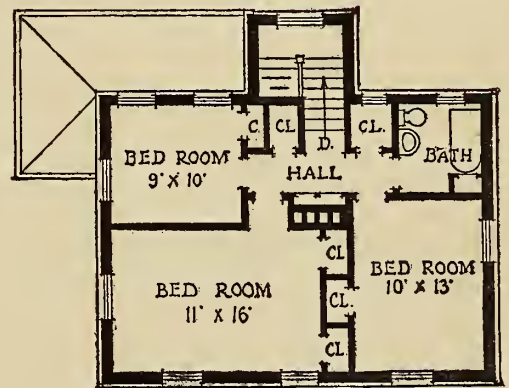


HOUSE No. 117

Designed by W. Marcovitch and W. Thies, Dayton, O.



First Floor



Second Floor

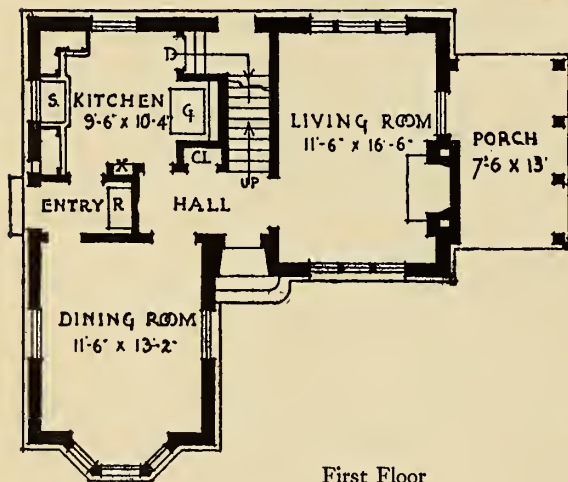
THIS design recalls the substantial square brick houses that were built by the old sea captains of New England. It has full height square rooms on the second floor and a cozy arrangement of rooms on the first floor. The staircase is at the rear and is attractively arranged in a separate projection with a large Colonial window on the landing. The living room fireplace

is set in an angle nook, thereby increasing the size of the room, which is of generous proportions. The porch is composed of a series of brick arches giving a cloister effect that is very quaint and would harmonize with an old-fashioned garden. The dimensions of the house are 36 ft. by 28 ft. The height of the ceilings on both floors is 8 ft. The house should face southeast.

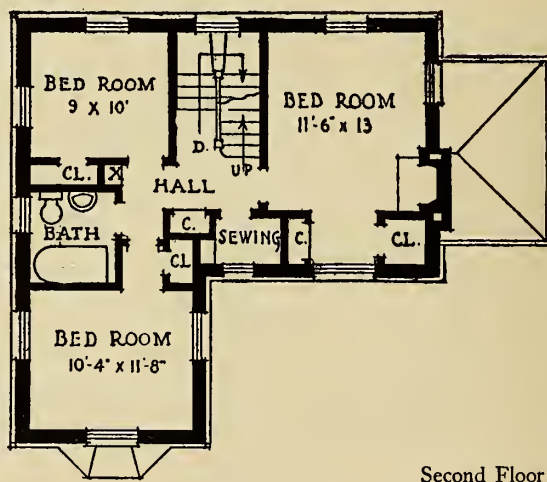


HOUSE No. 118

Designed by Frank A. Spangenberg and Earl Martin, Buffalo, N. Y.



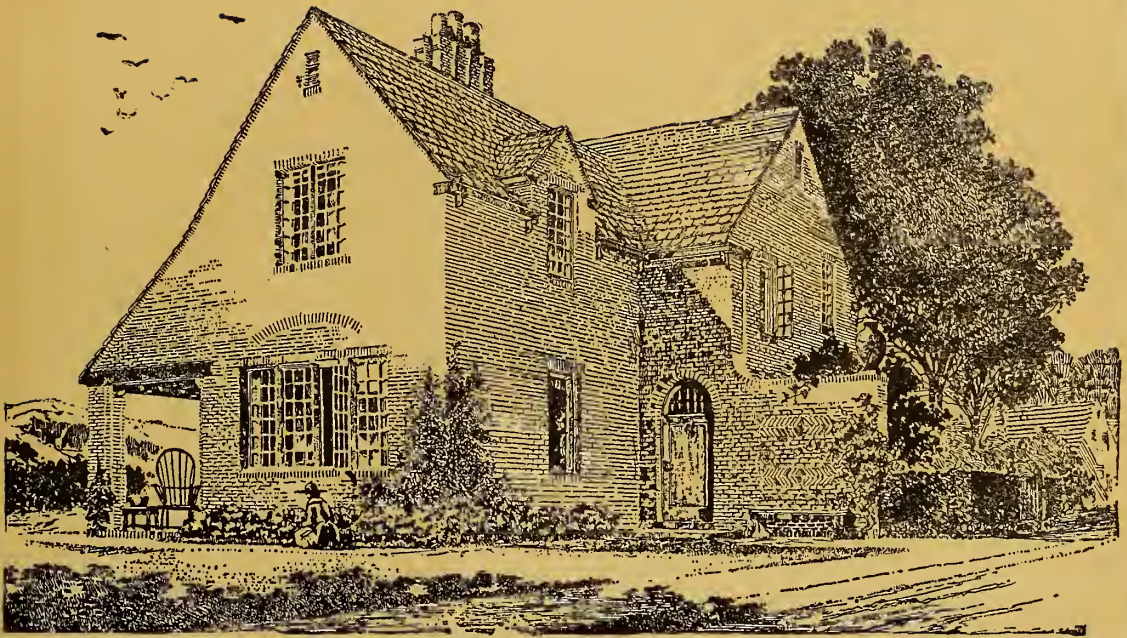
First Floor



Second Floor

THIS attractive house has a plan which insures pleasant, sunny rooms at any time of the day and the best of light and air, since most of the rooms have windows on three sides. It will fit a hillside lot as well as a level one and would look particularly well on a corner lot. It is conveniently planned, the rooms are comfortably large, the kitchen is convenient and well located with respect to the dining room and

entrance hall. A space for the sewing machine off the upstairs hall and a clothes chute (marked X on the plan) are special conveniences. The dimensions of the house are 32 ft. by 38 ft. and the ceiling heights are 8 ft. for both floors. It would be somewhat more expensive to build than a house with a square plan, but the resulting fine room exposures would be worth the additional outlay. The house should face southwest.

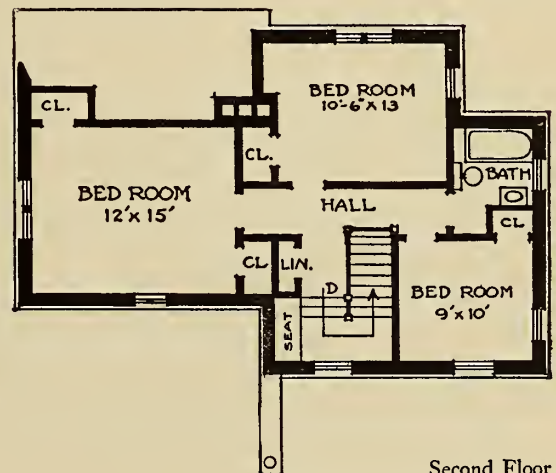


HOUSE No. 119

Designed by R. L. Walker, New York, N. Y.



First Floor



Second Floor

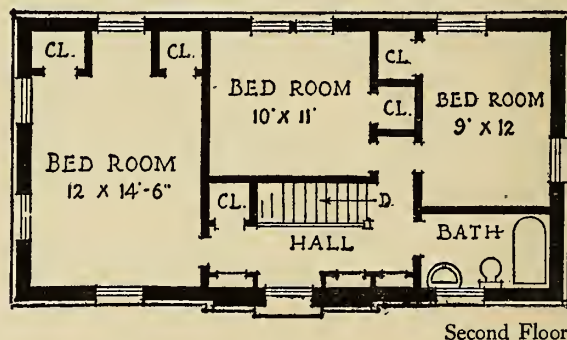
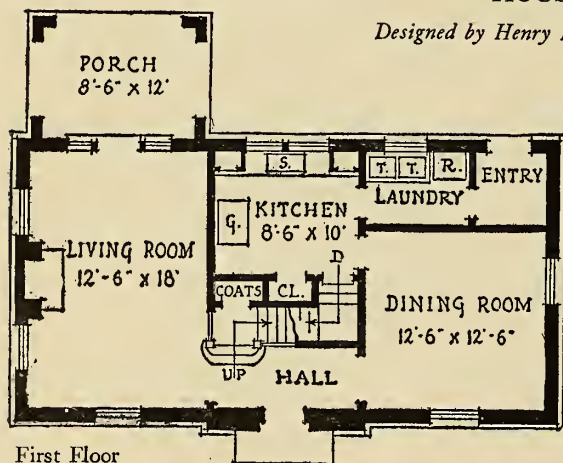
THIS house based on modern English designs would be very attractive built. It could readily be adapted to a hilly or level site and could be placed in a number of different positions depending upon the shape of the lot and the exposure. If the lot is narrow the living room end can be turned toward the street as shown in the illustration. With a wide frontage and a good view at the rear, the kitchen and long side of

the living room should face the street. In either position the best exposures would be had for the principal rooms if the living room end faced south-east. The floor plan is attractive; the rooms are comfortably large and conveniently arranged. The front door can be reached directly from the kitchen. The bedrooms have cross-ventilation and good closets. The dimensions of the house are 38 ft. by 26 ft. The ceiling height of both floors is 8 ft.



HOUSE No. 120

Designed by Henry H. Dean, New York, N. Y.



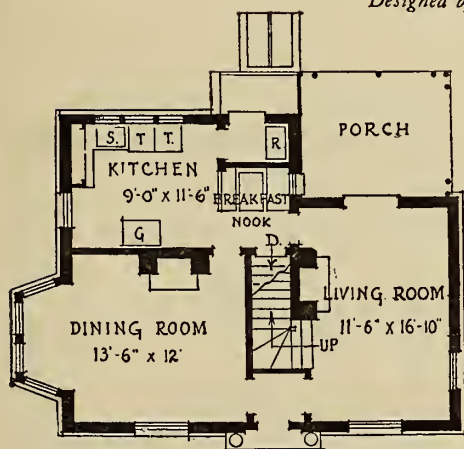
THERE is a sense of dignity in the design of this house that makes it appropriate for a suburban or small city location, and though in reality a small house, it would hold a prominent place among the usual large suburban houses. It could be placed near the street or set back some distance, depending upon the location of adjoining houses. There should be a level lawn with wide walk leading to the house to give it a proper setting. The principal rooms face the

street and the front should be toward the southeast to obtain the best exposure. The exterior is designed for two tones of brick with the darker shade used for the corners and the pattern on the walls. The interior is arranged on the scheme of a large house with the principal rooms either side of the entrance hall. The dimensions of the house, including the porch, are 28 ft. 6 in. by 38 ft. The height of the first floor rooms is 8 ft. and of the second, 7 ft. 10 in.

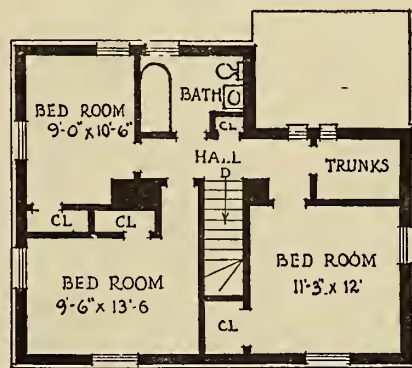


HOUSE No. 121

*Designed by F. J. Hartwig and L. J. Keimig
New York, N. Y.*



First Floor



Second Floor

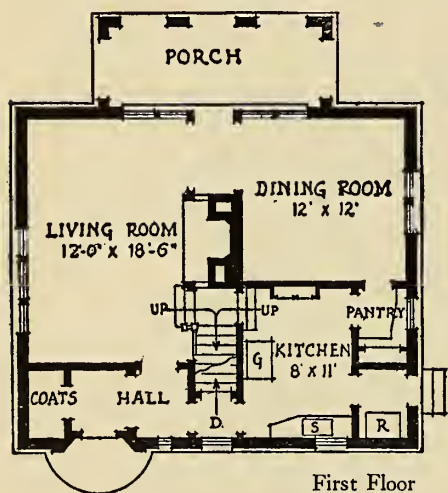
THERE is an old fashioned simplicity about this house that makes it look like a comfortable home. It has full square rooms and big windows after the manner of the houses of the late Georgian period in England. It would look well set up from the road with a drive at the left leading to a garage. A small flower garden could be planted at the rear of the porch, separated from the kitchen yard by a hedge or fence. The house should face northwest; this will permit

the morning sun to make the deep bay in the dining room a cheerful feature. The breakfast nook, if not desired, could be turned into a pantry; and similarly, on the second floor the trunk storage, if desired, could be added to the bedroom making it the size of the living room below. The walls are suggested to be built of comparatively smooth-surfaced brick. The extreme dimensions of the house are 34 ft. by 28 ft. The first floor rooms are 8 ft. high; the second, 7 ft. 6 in.

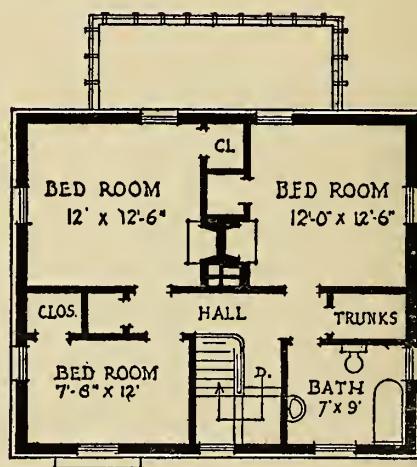


HOUSE No. 122

Designed by Simpson, Stewart & Drake, Sewickley, Pa.



First Floor



Second Floor

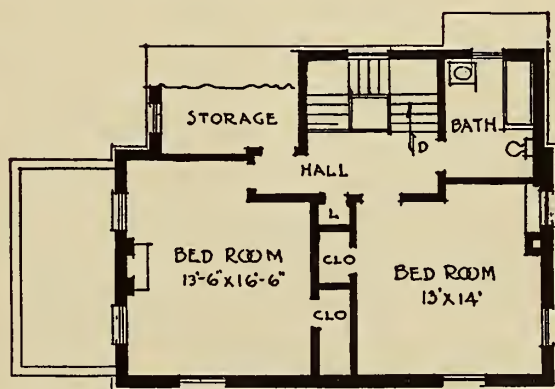
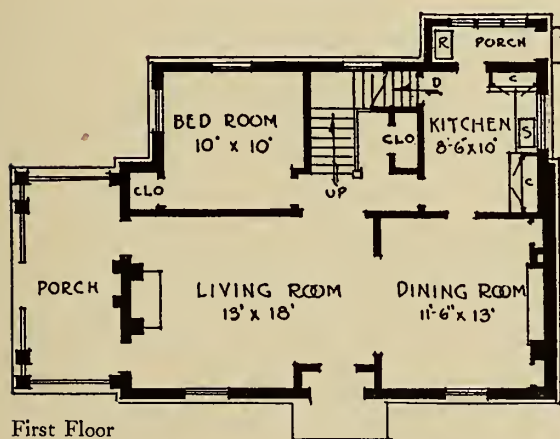
THE massive chimney of this house suggests cheery open fires within. There is a substantial look to the house that would make it appear, even when new, as though it had always existed. The interior arrangement is informal and it would be attractive to live in. All the bedrooms have cross ventilation. The ceiling heights are 9 ft. on the first floor and 8 ft. on the

second. The kitchen is placed on the front so that the garden in the rear may be enjoyed from the living rooms and porch. The front should face northeast. If desired the long side of the living room may be turned toward the street, in which case it should face east. The dimensions are 29 ft. 6 in. by 30 ft. 3 in., and in either position it would fit a 50-ft. lot.



HOUSE No. 123

Designed by H. C. McLaughlin and E. W. Drury, Chattanooga, Tenn.



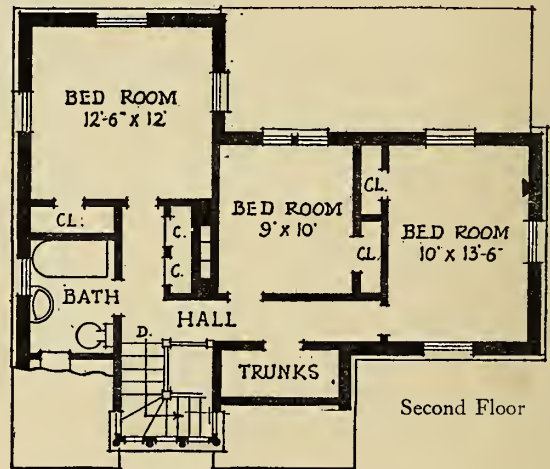
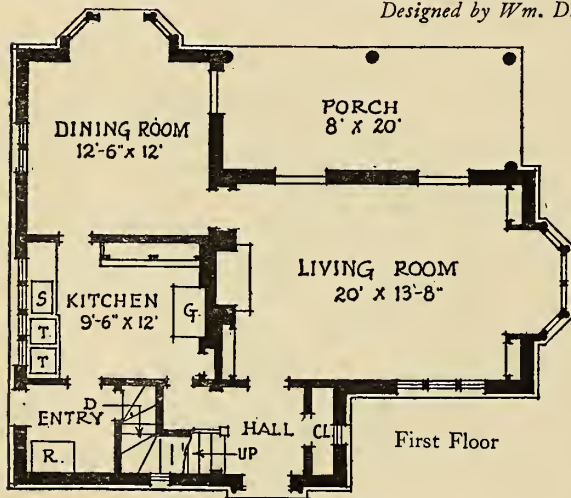
DIGNITY and formality characterize this design, making it suitable for a suburban or small city house. It should set back from the street to allow an ample approach and should face southeast. A grass or brick terrace across the front, bounded by a hedge, would give the house a splendid setting. It has high ceilings, the first floor being 9 ft. 6 in. high and the second, 9 ft. and would command attention even among houses of much larger size. The front of the

house is given over to living and dining rooms with a vestibule at the entrance. The stairs are located separately at the rear and there is a bedroom on the first floor which could be used for a study if desired. Two of the rooms are provided with a fireplace, but the one on the second floor could be omitted if desired. The extreme dimensions of the house are 40 ft. by 29 ft. A garage can be located in the rear with a drive on the right side.



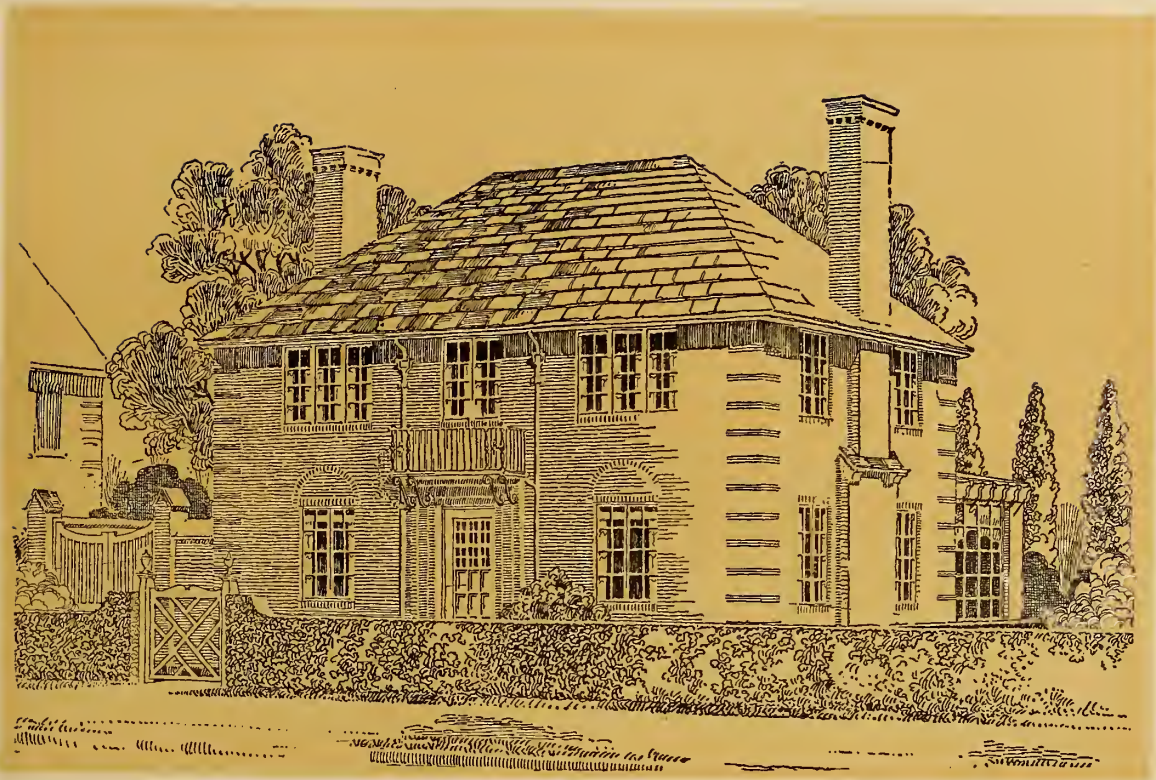
HOUSE No. 124

Designed by Wm. D. Lamdin, Baltimore, Md.



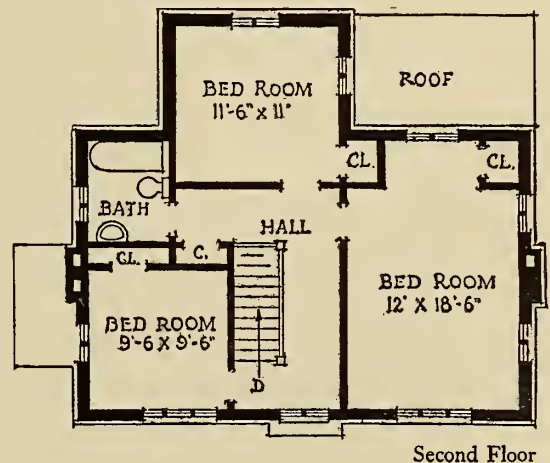
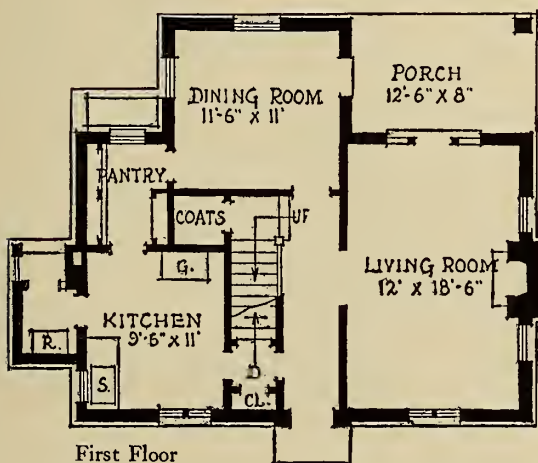
THIS house could be built on practically any site that had a level space at the rear to afford a lawn on the dining room and porch side. It is of picturesque design with suggestions of the English cottage. All its sides are interesting and any one of them could face the street, the entrance facing northwest. It is conveniently planned and has a fine living room with light on three sides. The extreme dimensions of the

house are 38 ft. by 32 ft. It would fit a corner lot well, but could also be placed on an inside lot of 50-ft. frontage. The rooms of the first floor are 8 ft. 3 in. high and those of the second, 7 ft. 9 in. The illustration shows the entrance side. The side toward the garden is equally attractive, and the pleasant arrangement of the porch with the living room and dining room would make the house especially livable in warm weather.



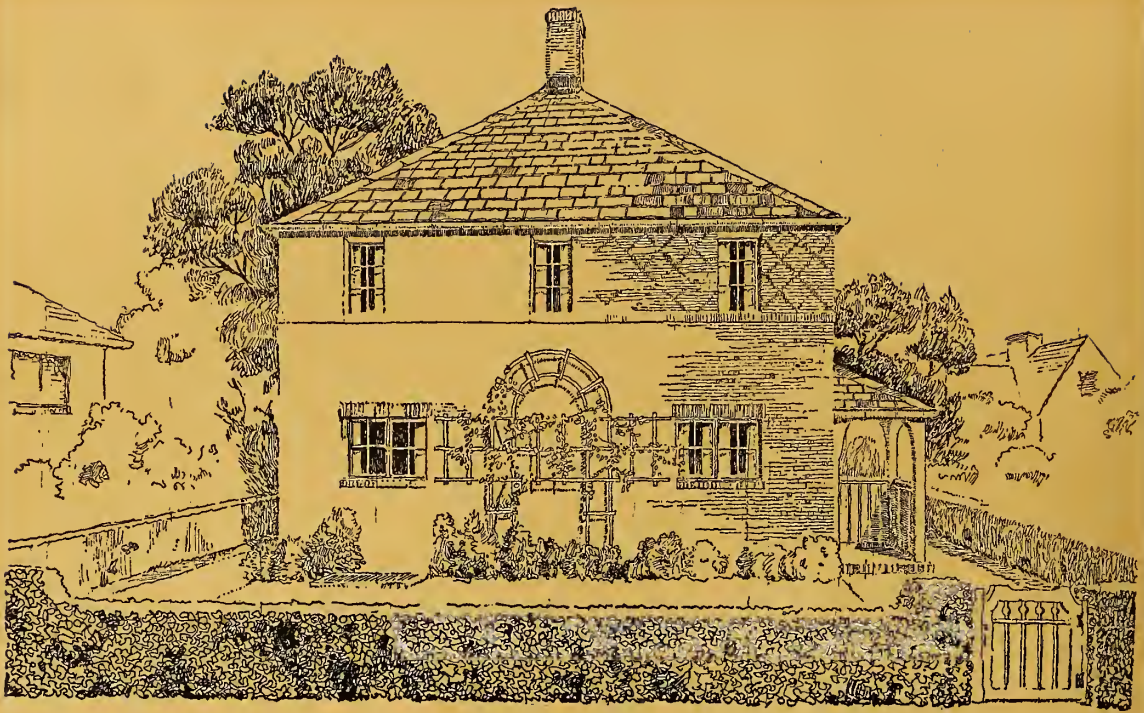
HOUSE No. 125

Designed by Daniel E. Shea, Springfield, Mass.



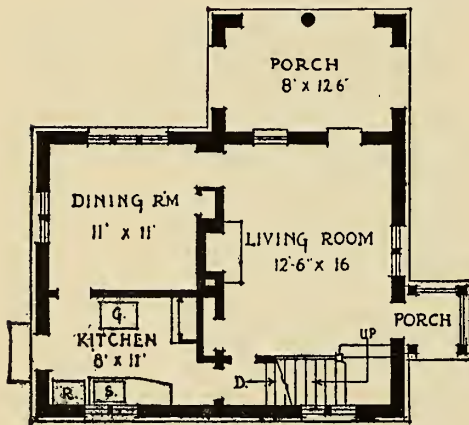
A GOOD type of house for a closely built up suburban community. It can be placed near the street with the rear reserved for garden and lawn where quietness and privacy can be enjoyed. The drive to a garage could be at the left and a wall or fence with gate would close off the kitchen yard from the street. The kitchen is conveniently arranged with refrigerator room and large pantry, and affords a pleasant view

of the street. The porch is on the rear and reached from both living and dining rooms. The bedrooms are of good size, the main one being the same as the living room. The house should face north or northwest to gain the best exposure for the living rooms. The extreme dimensions are 36 ft. wide and 28 ft. deep. The ceiling height of both floors is 8 ft. The plan is very spacious for a small house.

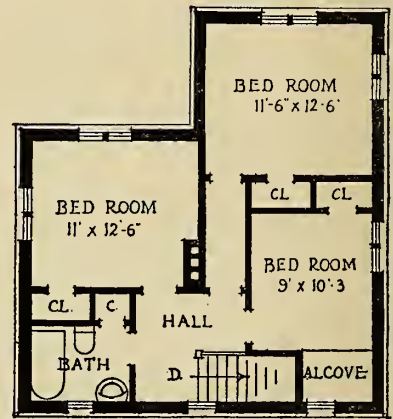


HOUSE No. 126

Designed by A. S. Nibecker, Jr., Los Angeles, Calif.



First Floor



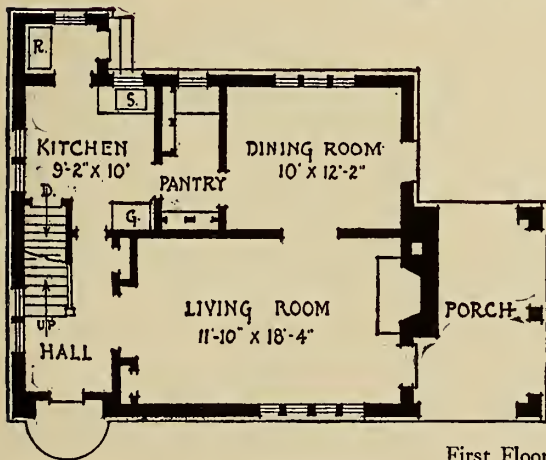
Second Floor

THE simplicity of this house will commend it to many. It can be built inexpensively and its well arranged rooms will provide a comfortable home. It can be placed in one of two different positions on the lot — with the entrance on the side as in the illustration, or on the front if the view of the street is more interesting, when this will be had from the porch. In either position the stair side should face northwest to give the best exposure to the living rooms. The bedrooms

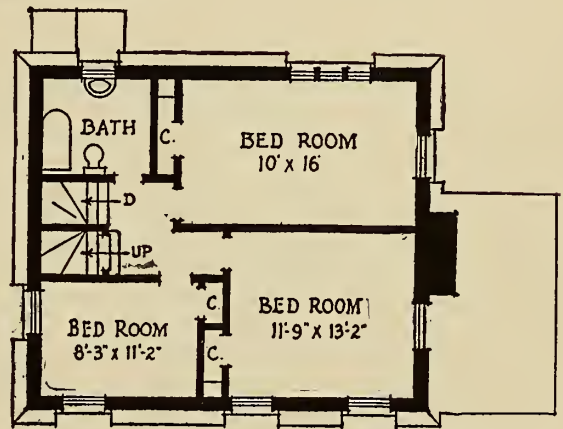
have square ceilings and are well supplied with large closets. The first floor rooms are 8 ft. 4 in. high, and the second 8 ft. The dimensions of the house are 27 ft. 6 in. by 30 ft. 6 in., making it suitable for a lot of 50-ft. frontage. Dark-toned brick with occasional darker headers is recommended for the walls with the diaper pattern in the second story formed with dark headers. The roof should preferably be of slate and the exterior woodwork brown stained.



HOUSE No. 127

Designed by Albert Harkness, Providence, R. I.

First Floor



Second Floor

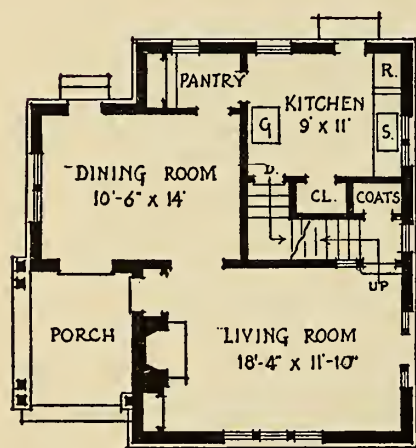
THERE is a comfortable cottage-like character to this house that would make it especially desirable for a country or small town home. Its simple gable roof broken by dormers would be very attractive and it has good wall spaces for vines to ramble over. The plan of both floors is direct and simple; the living room is of pleasing proportions and opens directly on the porch, which commands a view of the street and garden space. The house could be

placed on a 50-ft. lot with sufficient space at the left for a drive to a garage, and the garden could be arranged about the porch and in view of the dining room. The house should face southwest. Weathered timber work in the dormers is suggested filled in with brick. The dimensions of the house are 37 ft. across the front and 28 ft. deep. The first floor rooms are 8 ft. 1 in. high and the second, 7 ft. 8 in. All bedrooms are amply lighted and have cross-ventilation.

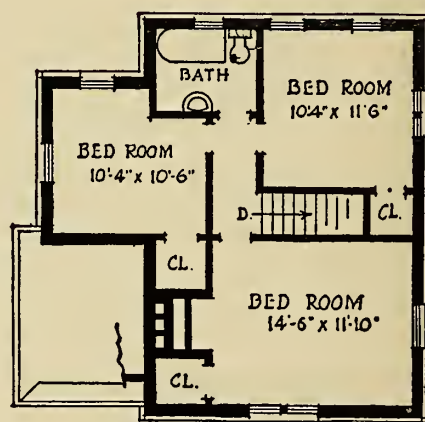


HOUSE No. 128

Designed by Theodore Ross, New York, N. Y.



First Floor



Second Floor

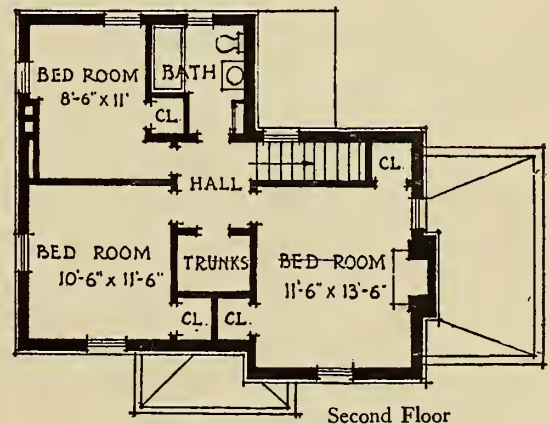
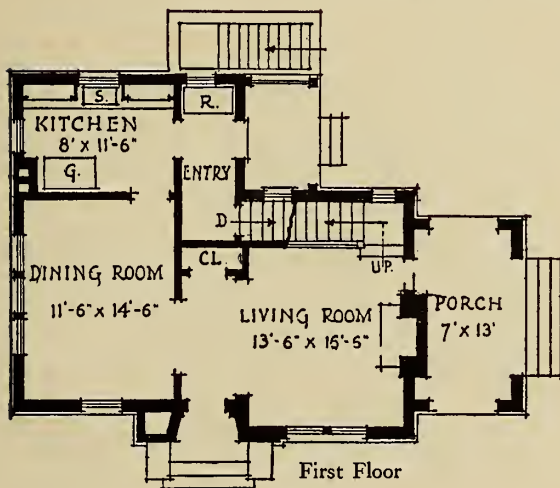
ALL sides of this house are interesting, and it could face the street as shown in the illustration, or the dining room could face the street; either way it would fit a 50-ft. lot. To obtain the best exposure for the principal rooms the long side of the living room should face southeast. The house could be set back from the street and the garden arranged in front, or the garden might be in the rear reached by a French

window from the rear of the dining room. The house is of English Tudor design and could be carried out nicely in brick with suggestions of half timber work in weathered oak or chestnut around the porch. The dimensions are 28 ft. across the front and 29 ft. deep. The rooms of both first and second floors are 8 ft. 6 in. high. The plan is compact and presents a very livable arrangement with especially good bedrooms.



HOUSE No. 129

Designed by Ernest Wilson Boyer, Pittsburgh, Pa.



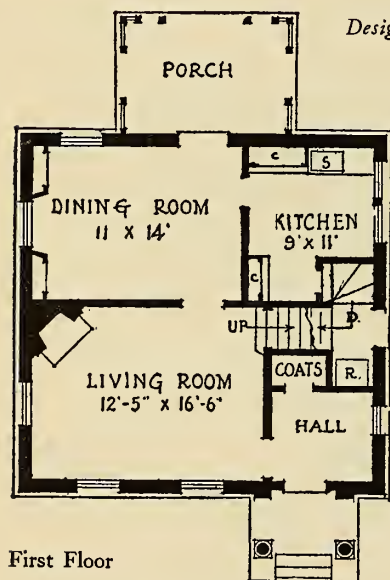
THE design of this house is based on no special style and it would accordingly harmonize with the houses of any community. It would be best located on a corner lot with the front parallel with the long frontage. In this arrangement a garage could be placed at the right end of the lot opposite the porch and with a short drive from the street. The garden would fit in well between the porch and garage. The

front of the house should preferably face the southwest; this will give good exposure to the principal rooms and morning sun to make the kitchen cheerful. The dimensions are 38 ft. 6 in. by 27 ft. 8 in. The rooms of both floors are 8 ft. high and the plans show a compact arrangement. The first floor rooms are arranged to give a feeling of space and the bedrooms are well equipped with closets.

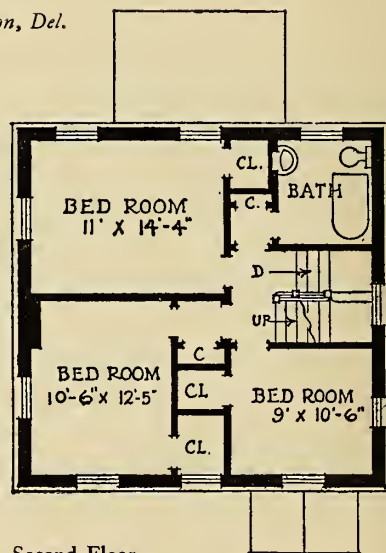


HOUSE No. 130

Designed by Alfred Cookman Cass, Wilmington, Del.



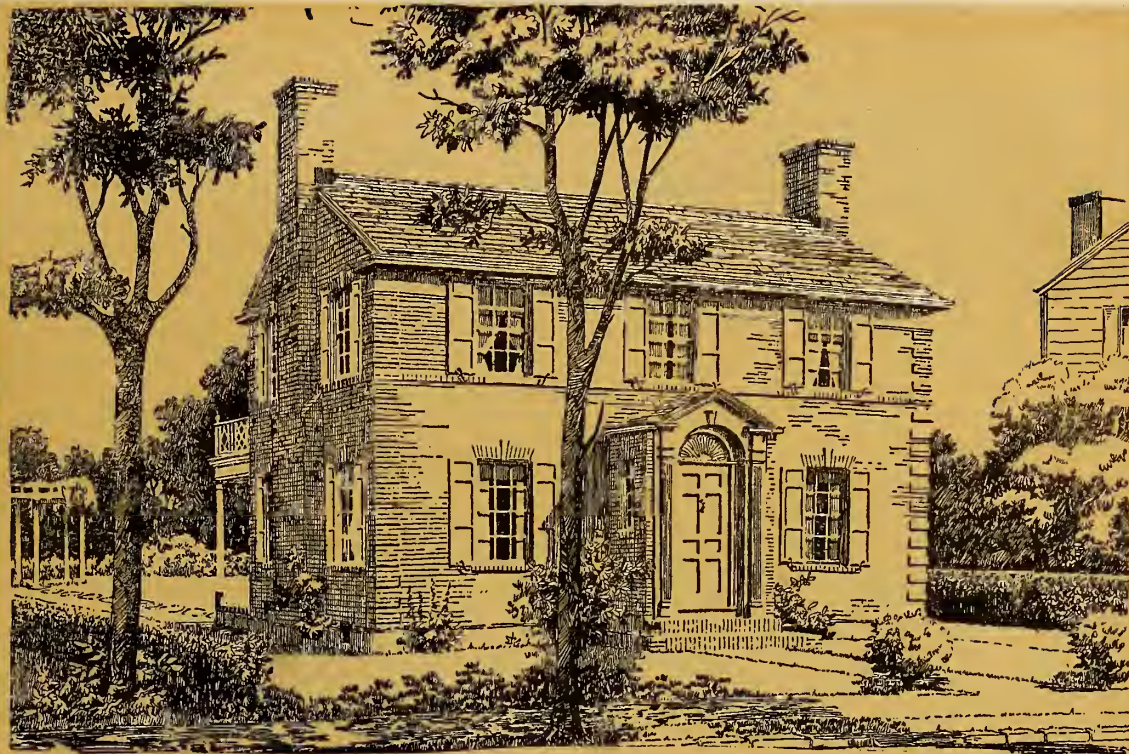
First Floor



Second Floor

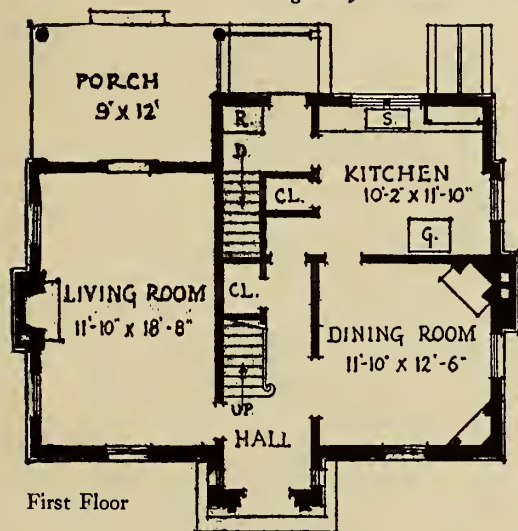
THIS is an essentially suburban type of house suggestive of the prim houses built in and around Philadelphia in Colonial days. It will make a dignified addition to any residential street. The plan is very compact and the simplicity of construction would enable it to be built inexpensively. The porch is on the rear,

reached from the dining room. A pleasant garden could be arranged on this part of the lot, secluded from the street. The drying yard could be enclosed in a lattice fence on the kitchen side. The dimensions of the house are 26 ft. 9 in. by 34 ft. 8 in. The ceiling heights for first and second floors are 8 ft. and 7 ft. 6 in., respectively.

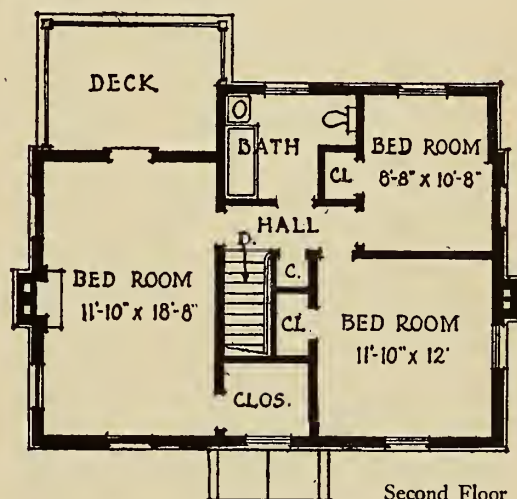


HOUSE No. 131

Designed by Alexander Beresniakoff and Wm. Koellmer, New York, N. Y.



First Floor



Second Floor

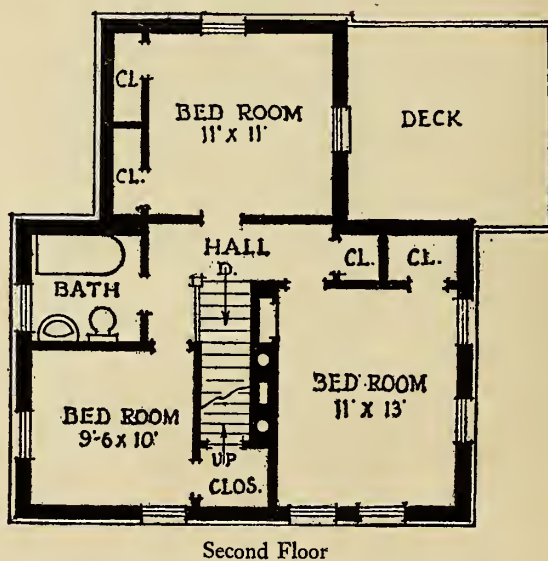
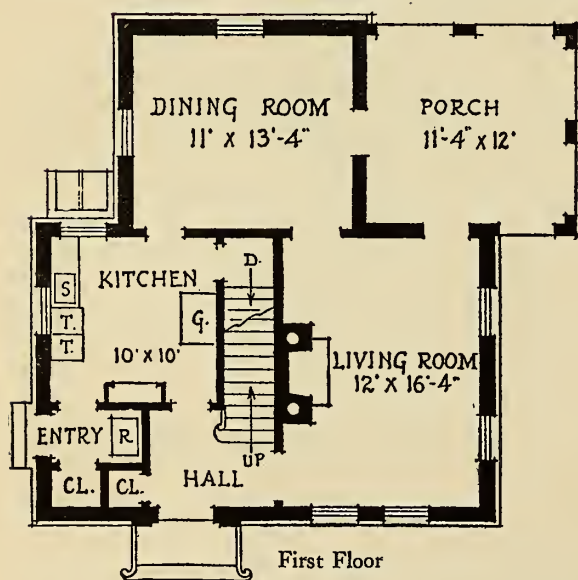
A COLONIAL house that would look well set close to the street in a suburb or small town, with the left side of the space in the rear devoted to a garden. The remainder of the plot can be occupied by a garage, drying yard, and kitchen garden. The dimensions of the house are 32 ft. by 32 ft. It would fit a 50-ft. lot or could occupy

a corner lot to advantage. The front should face southeast to give the best exposure to the living rooms. The height of the first floor rooms is 8 ft. and of the second, 7 ft. 8 in. The enclosed stoop, the row lock sill course, and the brick quoins add a charm consistent with the simple lines of the facade.



HOUSE No. 132

Designed by I. F. Heyl and J. W. McClymont, New York, N. Y.



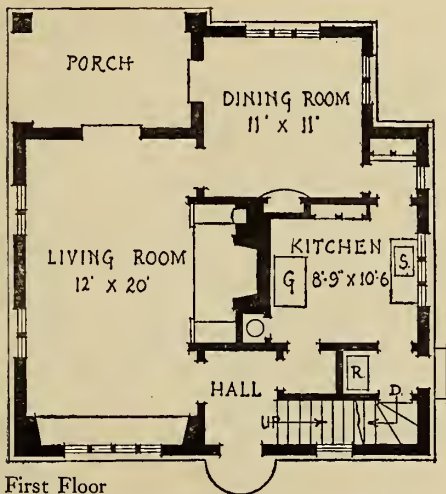
THIS design shows the simplest Colonial treatment and is equally suitable for a suburban or small town location. It can be placed close to the street with the rear of the lot reserved for a lawn and garden to be enjoyed from the porch. A frontage of 50 ft. will be ample. The

rooms on the first floor are independent units without wide connecting doorways. This affords coziness without making the house appear small. The dimensions are 30 ft. 6 in. by 32 ft. 8 in. The floor heights are 8 ft. 4 in. and 8 ft. for first and second floors. The front should face west.

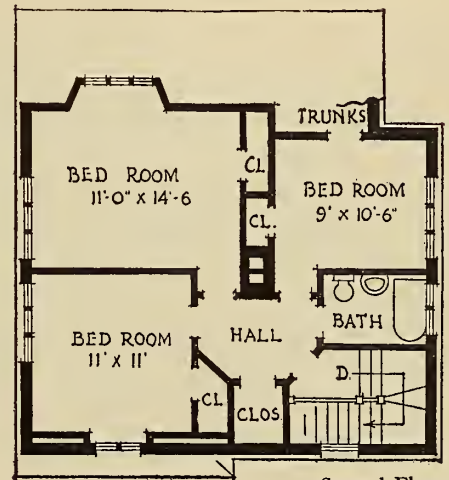


HOUSE No. 133

Designed by William F. Mooney, Jamaica Plain, Mass.



First Floor



Second Floor

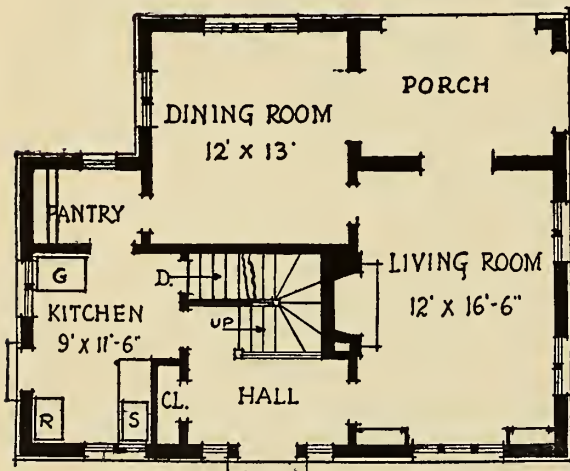
THIS interesting little house is derived from the English cottage. It has a nice relation between the rooms on both floors; the living room is large, well lighted and has a pleasant feature in the fireplace angle with seats on either side. The hall is simply a vestibule space with an entrance to the kitchen through a coat closet. The kitchen is conveniently arranged. The

dimensions of the house are 30 ft. by 31 ft. It could be located on a 50-ft. lot with the entrance to the garage at the right. The lawn and garden could be at the rear, opposite the porch. On the second floor there are three bedrooms reached from an ample hall. The ceiling heights are 8 ft. 3 in. and 8 ft. The front should face northeast.

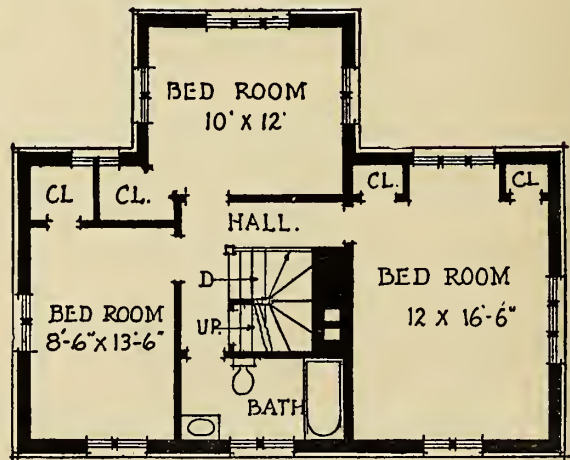


HOUSE No. 134

Designed by M. Boulicault, St. Louis, Mo.



First Floor



Second Floor

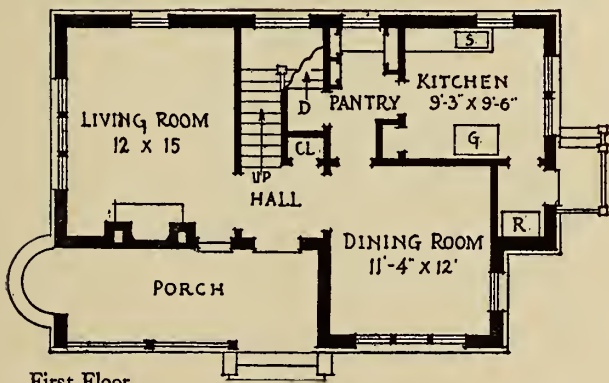
THIS house is planned to be placed near the street, and facing the northwest. The living rooms will have southern exposure and the rear of the lot should be developed with a lawn and garden to afford a pleasant outlook. The illus-

tration shows a view of the rear. The dimensions are 33 ft. by 26 ft. 6 in. The ceiling heights are 8 ft. 6 in. in both stories. The first floor is pleasantly arranged and the second has good bedrooms with ample closet space.

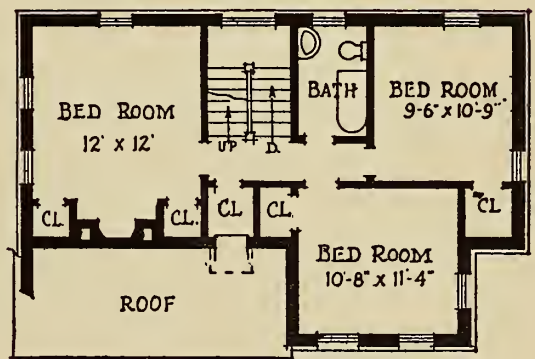


HOUSE No. 135

Designed by Charles Dana Loomis, New York, N. Y.



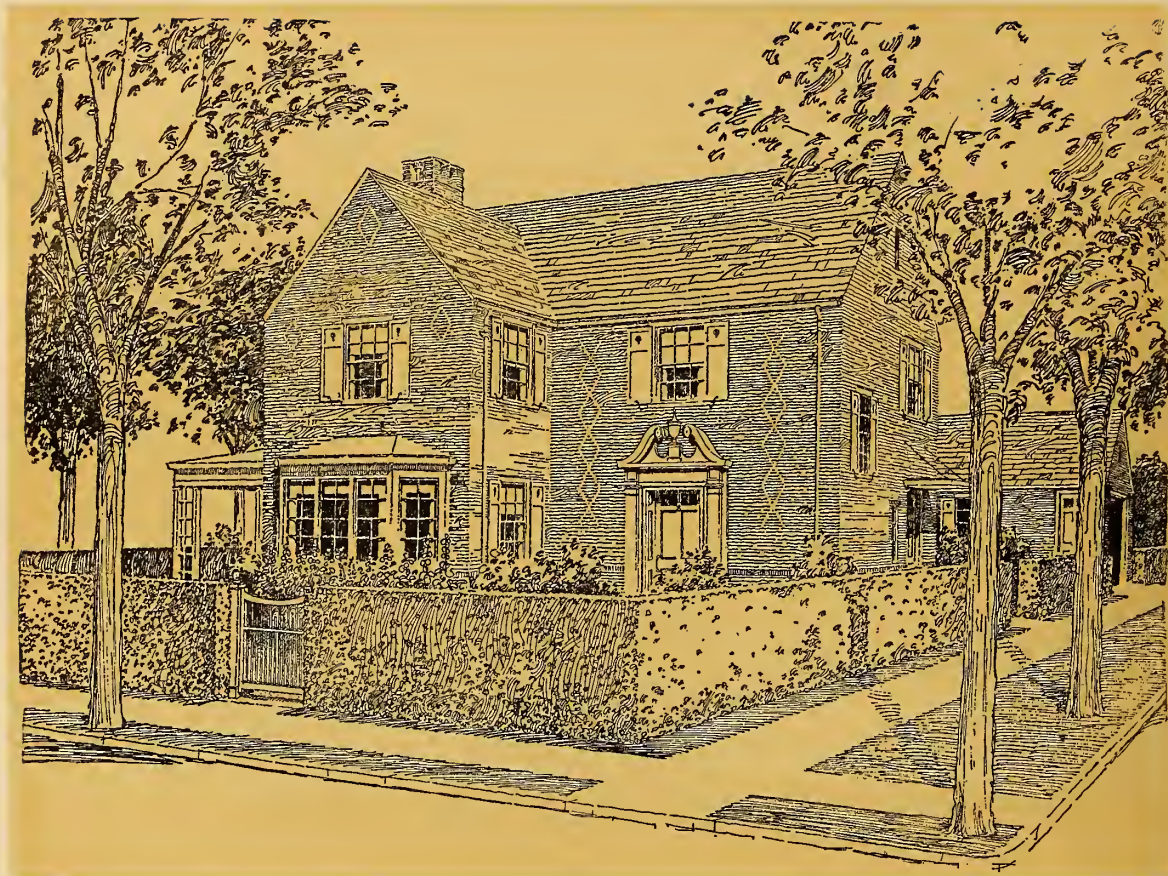
First Floor



Second Floor

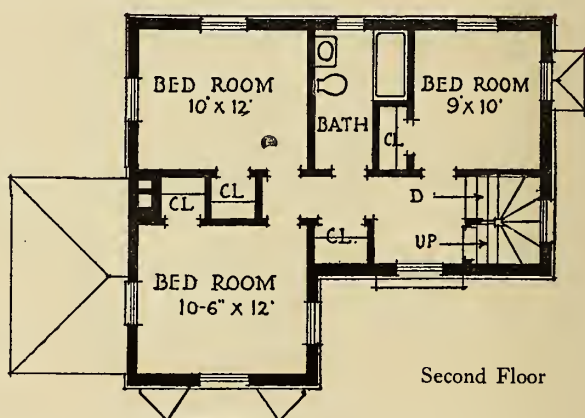
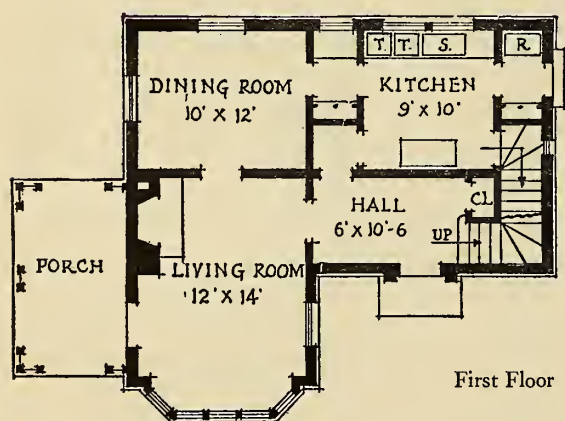
A SIMPLE house that would look equally well on a level lot or one sloping toward the street. It could be placed in two different positions, depending upon the frontage. If the lot is narrow the living room end could be turned toward the street, and if the frontage is 60 ft. or more it could be placed as shown in the illustration. In either case the end of the living

room should face south or southwest. The plan would make a very livable house. The principal rooms are arranged to make the interior look as large as possible and the kitchen is most convenient. The second floor is well provided with closet space. The dimensions are 35 ft. 4 in. by 23 ft. 5 in. The height of the first floor rooms is 8 ft. and the second, 7 ft. 10 in.



HOUSE No. 136

Designed by Howard A. Goodspeed, West Medford, Mass.



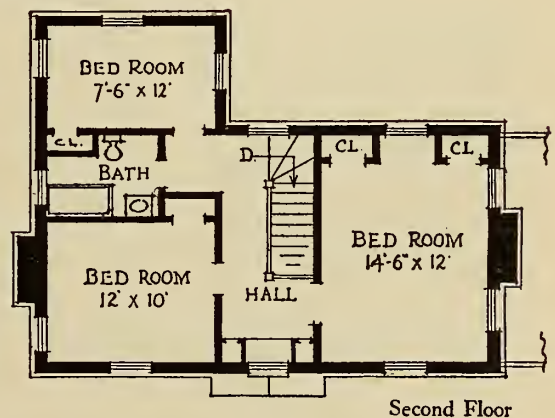
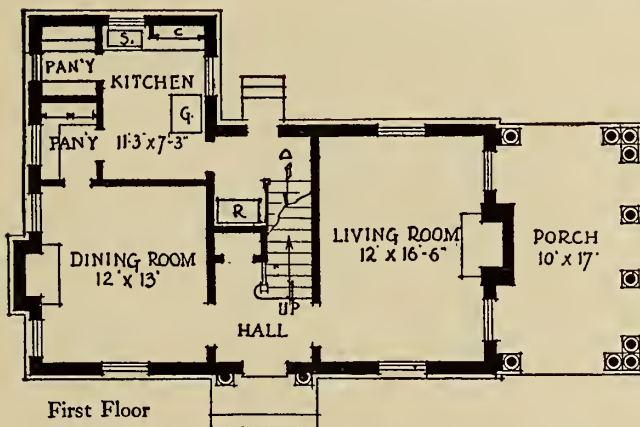
THIS house is modern in character but possesses many Colonial features. It could be placed on a corner lot with the front on the narrow side as shown in the illustration, or it could equally well occupy an inside lot. The garage in the first arrangement could be reached from the side street, and in the other by a drive past the kitchen. The garden in either arrange-

ment would be at the left side of the rear and viewed from the porch and dining room. The front should face the southeast to give sunny exposures to the principal rooms. The living room is especially attractive with the broad bay window. The dimensions of the house are 38 ft. 6 in. across the front and 28 ft. deep; the floor heights are 7 ft. 10 in. and 7 ft. 6 in.



HOUSE No. 137

Designed by Robbins Lewis Conn, New York, N. Y.



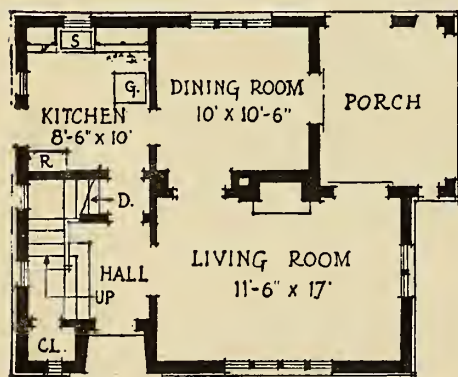
THIS design shows a dignified handling of the Colonial style and is a good type of house for a suburban location. It can be placed near the street. The outlook for the principal rooms is from the front, and to obtain the best exposure it should face north; this gives morning sun in the dining room and sun all day in the

living room. The house would best fit a corner lot with the long side the principal frontage. A lawn and garden could then be had opposite the porch and a drive to the garage at the rear past the kitchen. The dimensions of the house are 43 ft. 6 in. by 26 ft. The first floor rooms are 8 ft. 6 in. high and the second, 7 ft. 9 in.

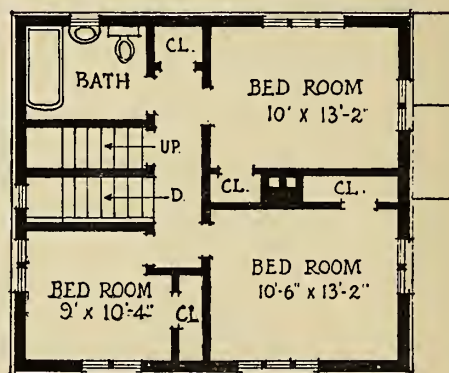


HOUSE No. 138

Designed by Fritz Steffens and Earl Purdy, Ithaca, N.Y.



First Floor



Second Floor

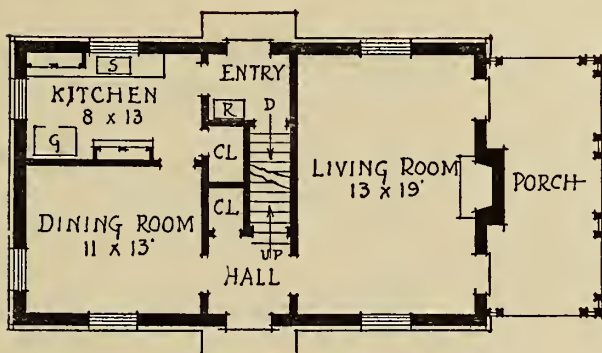
A SIMPLE house derived from the style of the English cottage that could be placed close to the street with good effect. It should face west, giving morning sun in the dining room and a southern exposure to the porch. If the lot on which it is placed is sufficiently wide, the south side could be used for the garden and lawn, where it would be pleasantly viewed from the porch.

The arrangement of the rooms is compact and convenient. The dimensions of the house are 30 ft. by 25 ft. The rooms of the first floor are 8 ft. 6 in. high and those of the second, 8 ft. All the bedrooms have cross ventilation and good closets. There is good storage space in the attic. The house could be built inexpensively because of its simple composition.

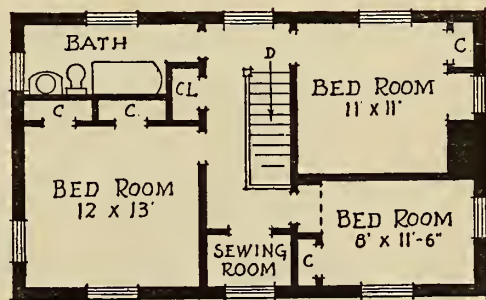


HOUSE No. 139

Designed by Herman Brookman and Karl Bradley, New York, N. Y.



First Floor



Second Floor

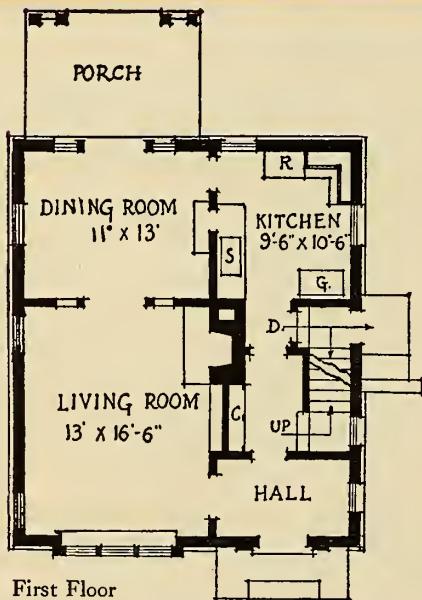
THERE is solidity and an expression of good breeding about this house that would make it a welcome addition to the best community. It is modeled after the small Georgian houses of England. It would look well placed close to the road and if on a corner lot with the front parallel to the long side, the garage could be placed at the extreme right, opposite the porch with the garden between. A hedge along the street

will give a setting to the house and afford privacy for the garden. A good exposure would be north-west for the front. This will give morning sun in the dining room and afternoon sun for the living room and garden. The dimensions of the house are 43 ft. by 21 ft. 2 in. The rooms are of good size; the ceiling height on the first floor is 7 ft. 10 in. and on the second, 7 ft. 6 in. A place for the sewing machine upstairs is a convenience.

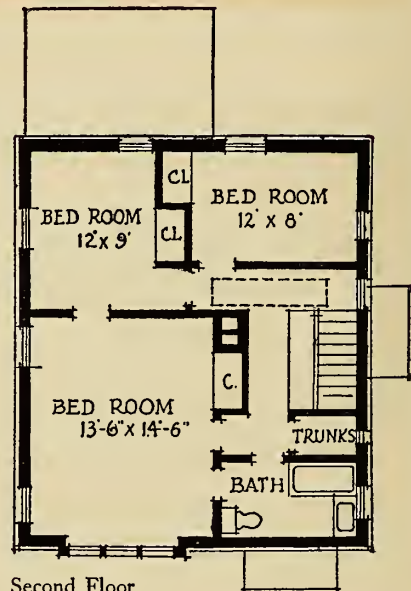


HOUSE No. 140

*Designed by Claude Bragdon
Rochester, N. Y.*



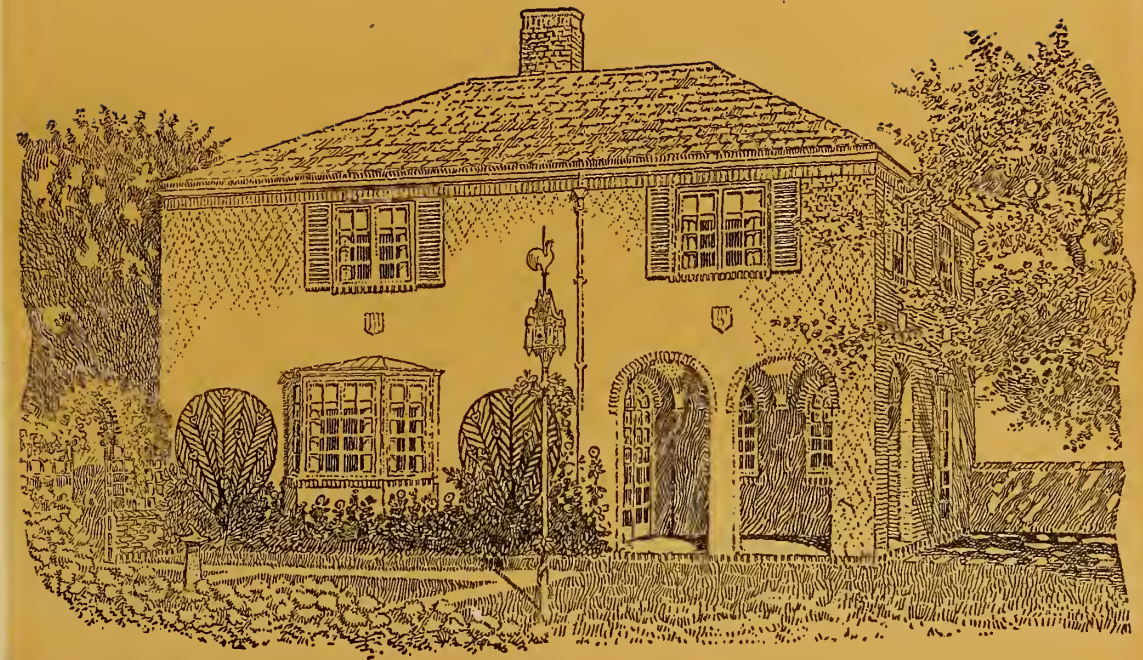
First Floor



Second Floor

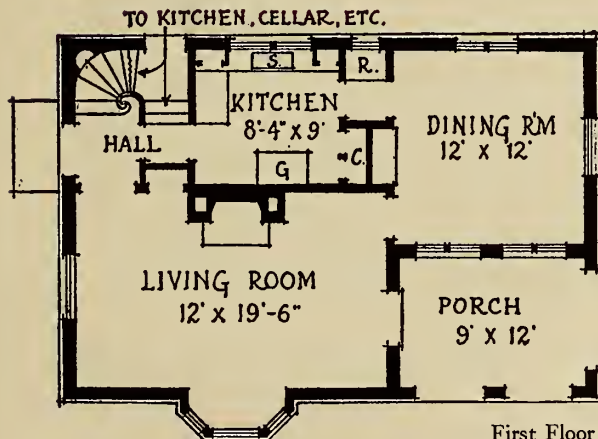
THERE is a special compactness about the plan of this house and a simplicity in its exterior design that would make it inexpensive to build. It furthermore has a fine sense of dignity and it would look well in any suburban

street. It can face either southeast or southwest and have pleasant, sunny living rooms. The height of the first floor is 7 ft. 10 in. and the second, 7 ft. 6 in. The extreme dimensions of the house are 25 ft. by 39 ft.

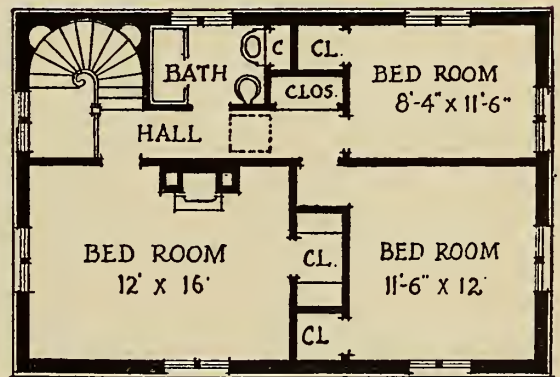


HOUSE No. 141

Designed by Edward F. Mabey, Boston, Mass.



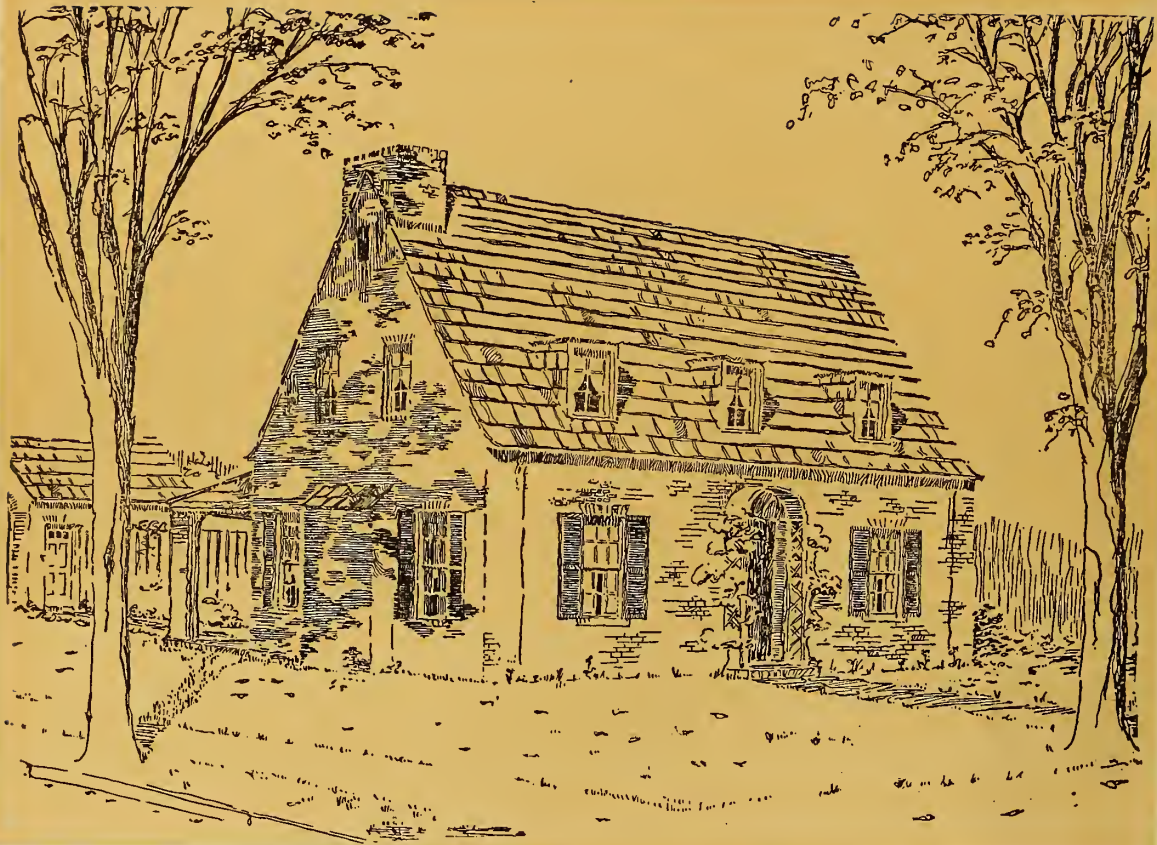
First Floor



Second Floor

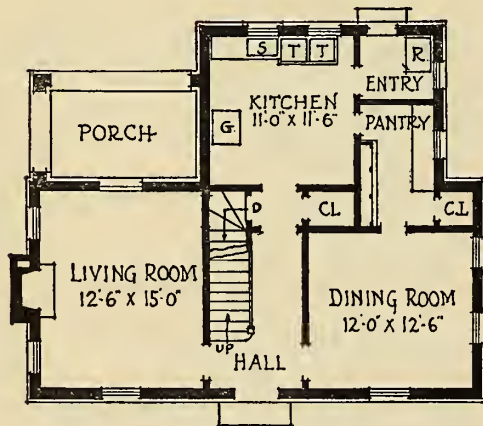
IF well set back from the road this house could face as shown in the illustration with the garden in front and the entrance on the side. Otherwise it would be better to turn the narrow end to the street with the garden in the rear, reached from the porch. In either arrangement the entrance side should face north. The

house has comfortable rooms with square ceilings, the first floor is 8 ft. 1 in. high and the second, 7 ft. 6 in. The circular stairs are a pleasant feature of the interior. The dimensions are 33 ft. 8 in. by 22 ft. 8 in. The brick used for the walls is laid in such a manner as to give a small all-over diamond pattern.

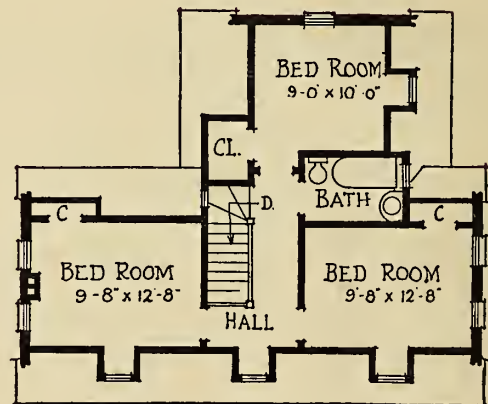


HOUSE No. 142

Designed by Dwight E. Smith, New Haven, Conn.



First Floor



Second Floor

A COLONIAL cottage design with all the character of the simple village type so much admired. It can be placed near the street and would look equally well on a corner or an inside lot of 50-ft. frontage. The dimensions of the house are 34 ft. 8 in. wide and 28 ft. deep. The front should face the southeast to have morning sun in the

dining room. Windows on three sides of the living room will give sun all day, and the garden, if located in line with the porch, will have the best exposure. The kitchen is of good size and there are in addition a large pantry and entry. The rooms on the first floor are 7 ft. 10 in. high and on the second, 7 ft. 6 in.

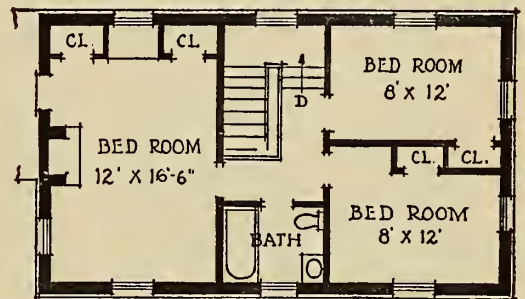


HOUSE No. 143

Designed by R. H. Douglas, Pittsburgh, Pa.



First Floor



Second Floor

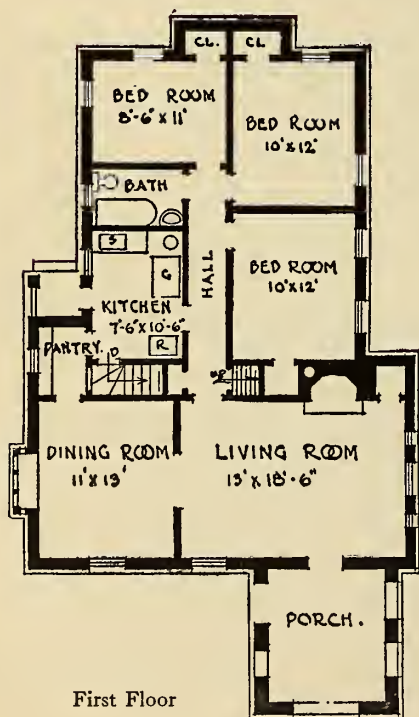
THIS house has a dignity in its design that would make it prominent even among houses of much larger size. It would be well suited to a suburban location and would be best placed where the view is toward the street. The principal rooms are across the front and the exposure should be southeast to insure their being sunny and pleasant. A terrace across the front connects the side porch with the entrance, and French windows in living and dining rooms

give access to the terrace. This feature makes the house suitable for a site sloping up from the street. It could equally well be adapted to a level site in which case the terrace could be omitted if desired. The dimensions of the house are 45 ft. by 20 ft. The rooms are 8 ft. high on both floors. The roof of the porch is flat and is reached by a French window from the main bedroom. This room is the same size as the living room and is lighted from three sides.



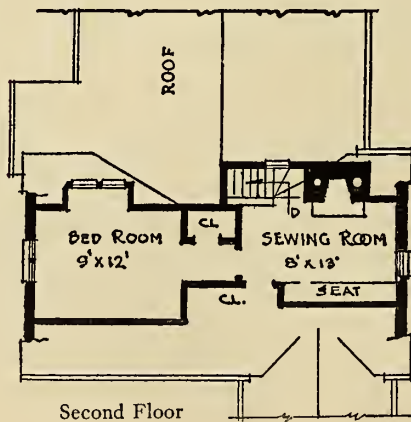
HOUSE No. 144

Designed by Albert Sturr, New York, N. Y.



THERE is a sturdy appearance to this bungalow that would make it especially attractive in brick. The front is given over to the living and dining rooms, and opening from a common hall is an independent group of three bedrooms and the kitchen. A fourth bedroom can be had in the roof of the main part. The house should

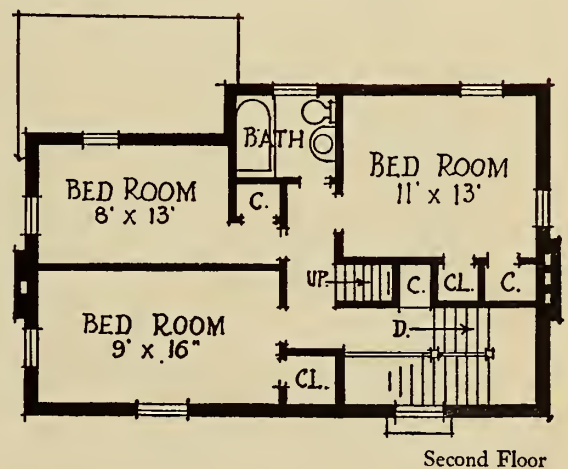
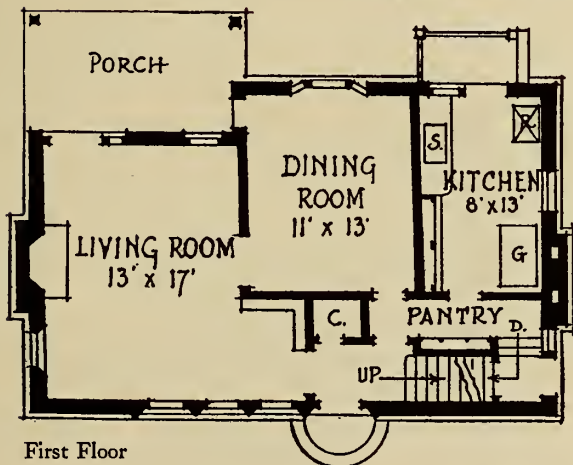
face the south-east. Its dimensions are 57 ft. by 31 ft. 6 in. The ceiling height of the first story is 8 ft. The trim around openings is meant to be laid in brick of a different color tone from those in the walls giving a pleasing effect.





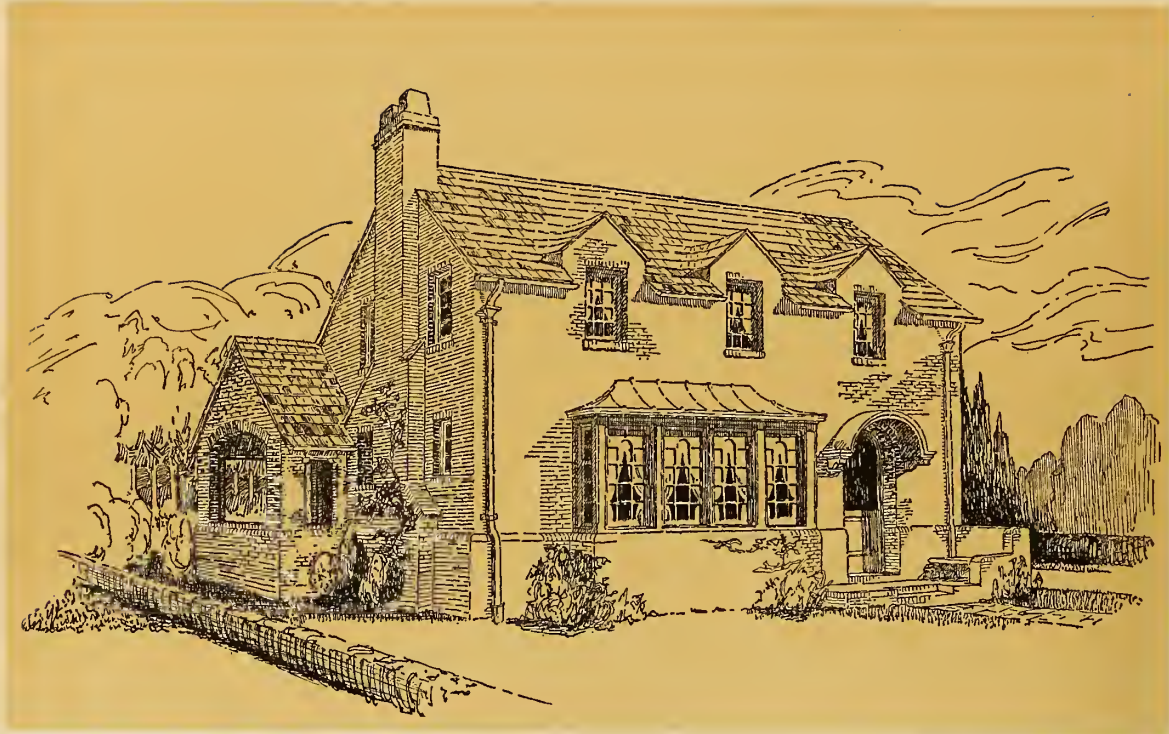
HOUSE No. 145

Designed by Olaf William Shelgren, Buffalo, N. Y.

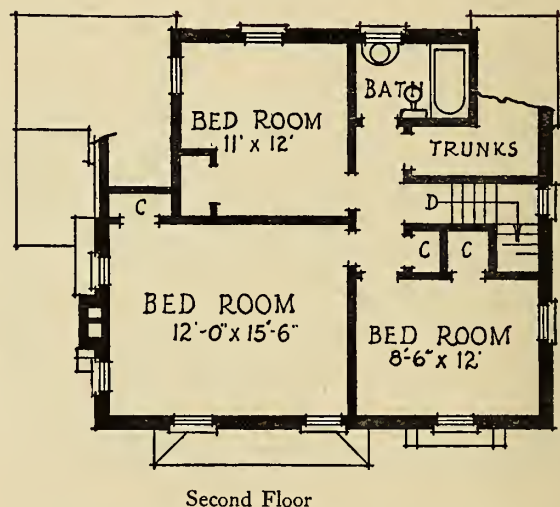
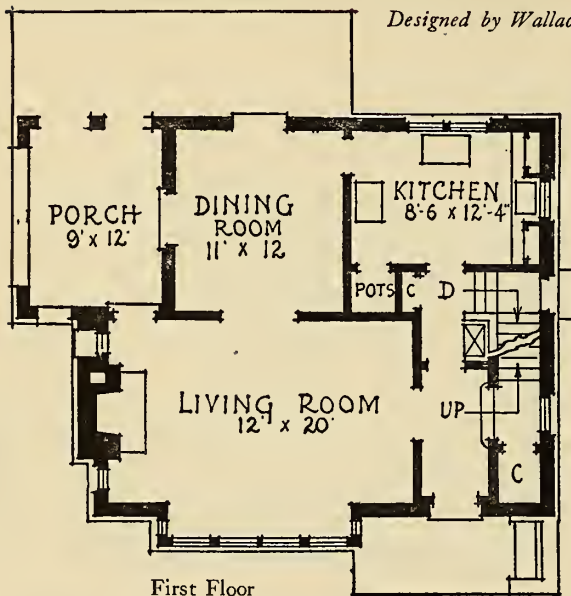


INDIVIDUALITY marks this little house that would be a pleasure to find in any street. It could be placed close to the street with a boundary hedge as suggested in the illustration, and the rear reserved for garden and lawn. The porch and dining room will thus have a pleasant outlook. A garage can be located on the right. The front should face northeast to afford

the best exposure for the living rooms. Only the minimum space is given to the entrance hall, but it is directly connected with every room on the first floor. The stairs are attractive with the large window toward the street. The dimensions of the house are 35 ft. by 27 ft. The first floor rooms are 8 ft. high and the second, 7 ft. 10 in. There is storage space in the attic.

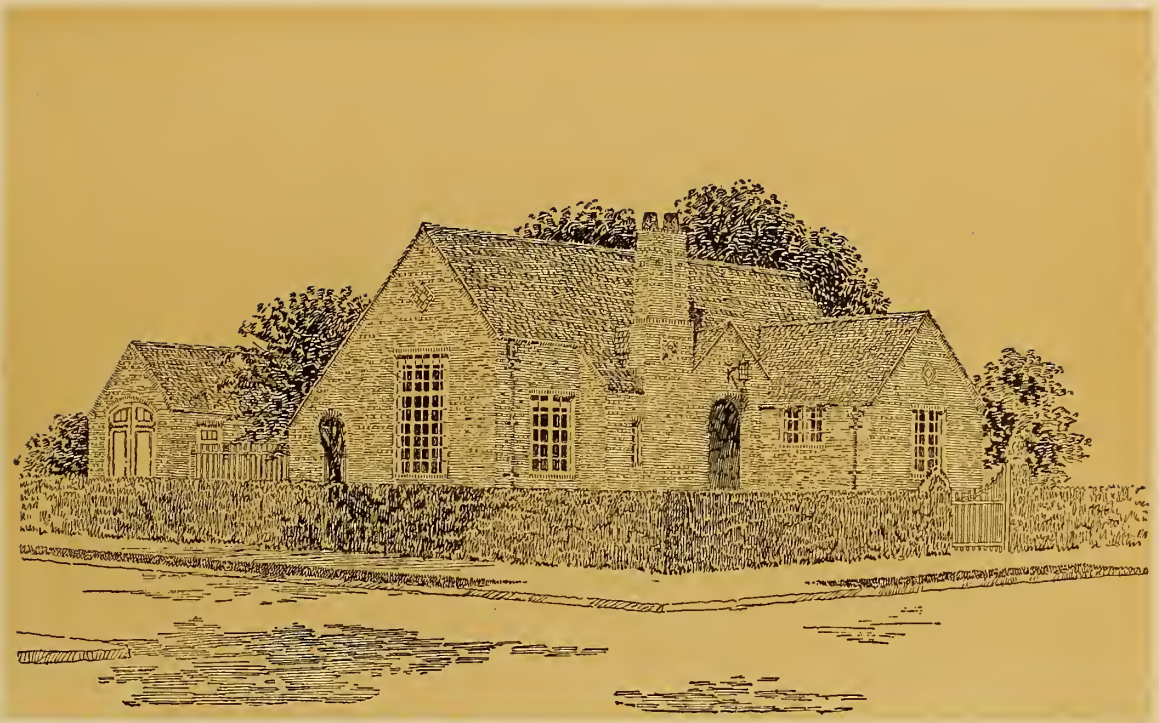


HOUSE No. 146

Designed by Wallace M. Baxter, Miami, Fla.

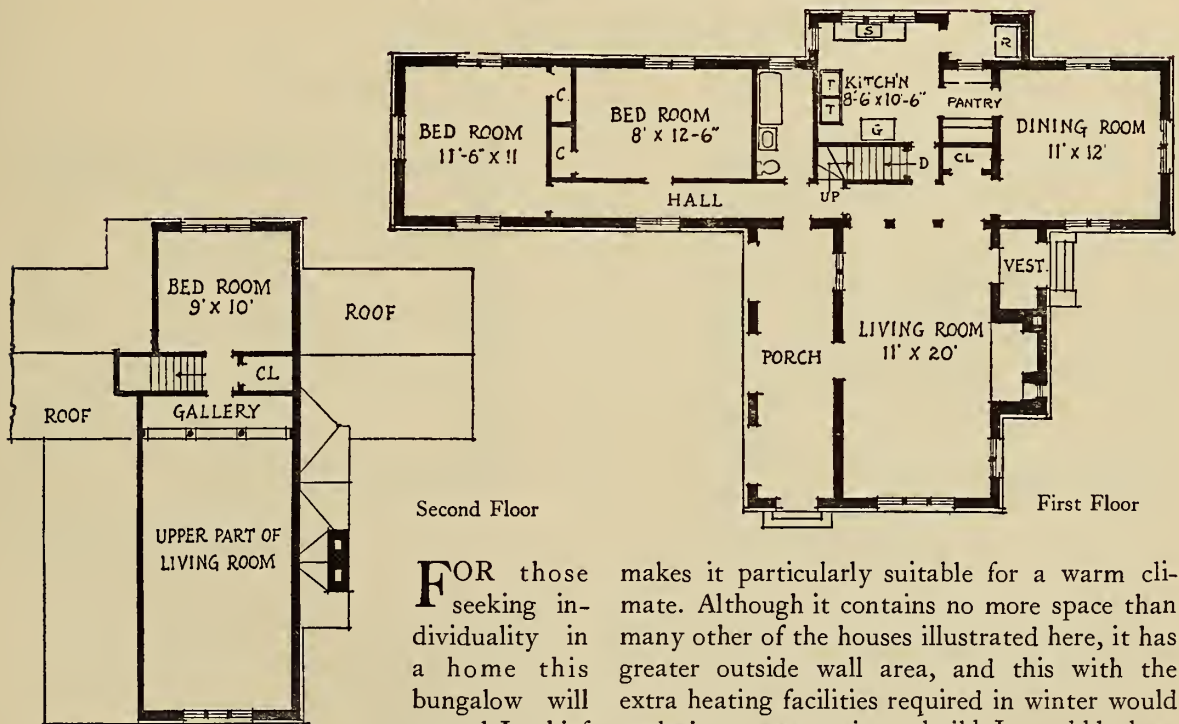
THIS house would be appropriate for a narrow lot on a suburban street which would afford a pleasant outlook from the attractive living room bay. The extreme width of the house is 35 ft. and its depth 28 ft. It could occupy a 50-ft. frontage with ample space for a drive at the right side to a garage in the rear. The house should face east to give pleasant exposures

to the principal rooms and the garden space at the rear. A flower garden and lawn could be made the width of the terrace beyond the dining room. The first floor rooms are 8 ft. 4 in. high and the second, 7 ft. 10 in. The plans of both floors show a compact and convenient arrangement. The roof of the bay window is metal, and of the house, slate or shingle tile.



HOUSE No. 147

Designed by Ralph H. Hannaford, Boston, Mass.



feature is an open timbered, high ceiled living room. The other rooms are 8 ft. high. All of the rooms have windows on three sides and this

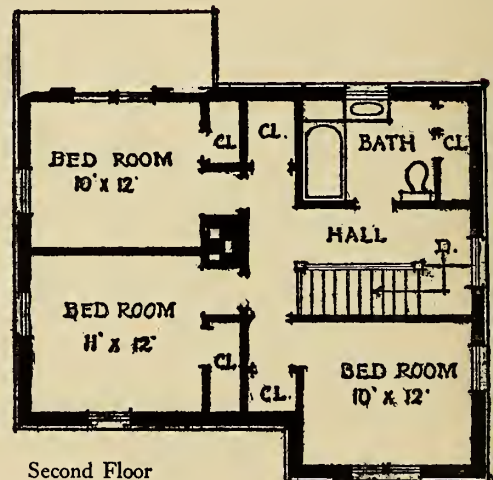
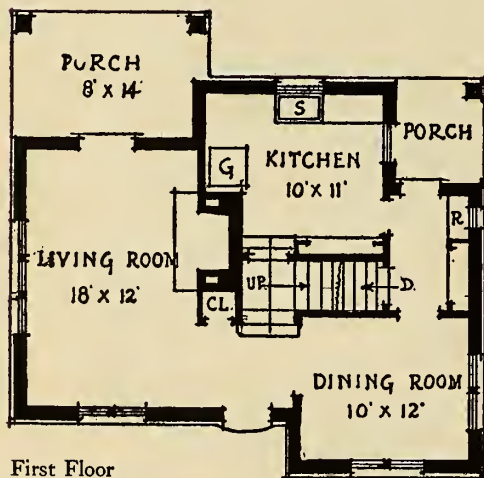
FOR those seeking individuality in a home this bungalow will appeal. Its chief

makes it particularly suitable for a warm climate. Although it contains no more space than many other of the houses illustrated here, it has greater outside wall area, and this with the extra heating facilities required in winter would make it more expensive to build. It would be best located on a deep corner lot placed so the dining room would face east. Its dimensions are 37 ft. 8 in. by 60 ft. 6 in. Plans do not include garage.



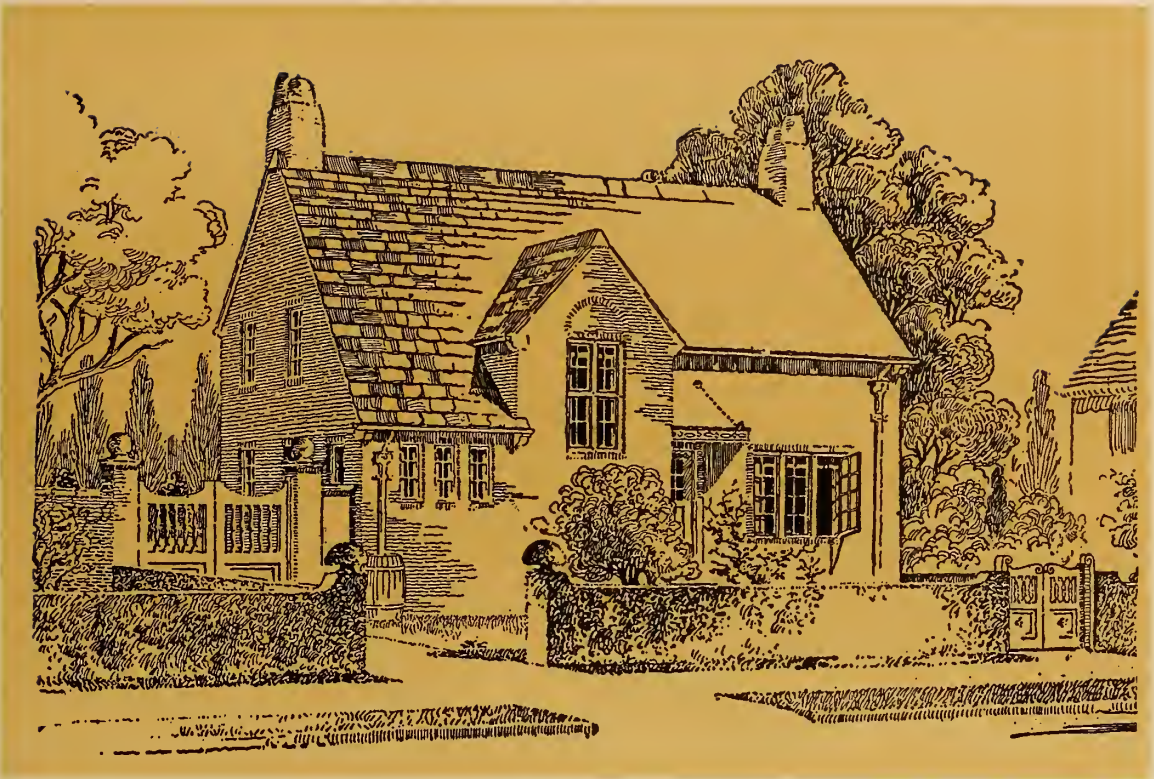
HOUSE No. 148

Designed by Norman Biard Baker, New York, N. Y.



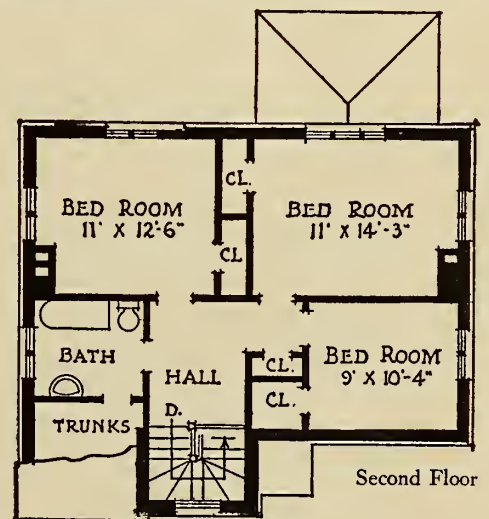
NOTHING more suitable for a village or country home could be had than this informal cottage. Its low sloping roofs create at once an atmosphere of home; there is, however, ample room in the second story gained by long dormers on the side and rear. The living room is of good size and connected directly with the porch and overlooking the space that should be

developed as a garden. The house can be placed close to the road and a hedge will afford privacy as shown in the illustration. The front should face the east. Its maximum dimensions are 32 ft. by 31 ft. It could be placed on a 50-ft. lot with sufficient space reserved at the right for an entrance to a garage. Ceiling heights are 7 ft. 10 in. on both floors.



HOUSE No. 149

Designed by Daniel E. Shea, Springfield, Mass.



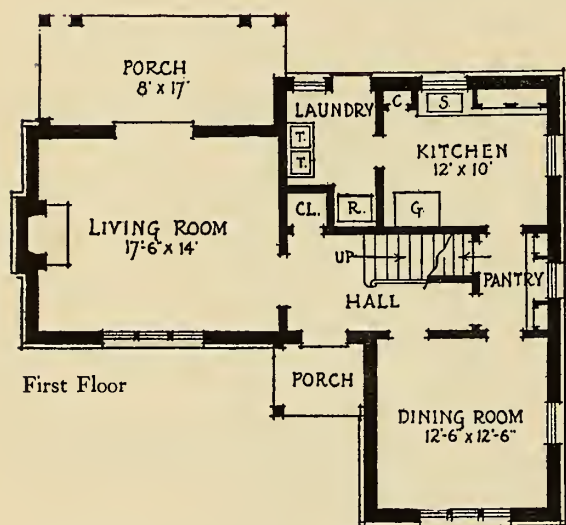
MODERN English work is the inspiration for the design of this house, which would be distinctive in any location. It could readily be adapted to a sloping or irregular site if there were a level space at the rear to form a lawn and garden across the living and dining rooms. These rooms should have the best exposure and the street front should, therefore, face northwest.

The first floor rooms are nicely grouped and the stairs are especially attractive with the large window. Entrance to a garage could be had at the left, past the kitchen. The dimensions of the house are 31 ft. by 35 ft. The ceiling height of both stories is 8 ft. Although the roof is low in front, the bedrooms have full height because the rear is two stories high.

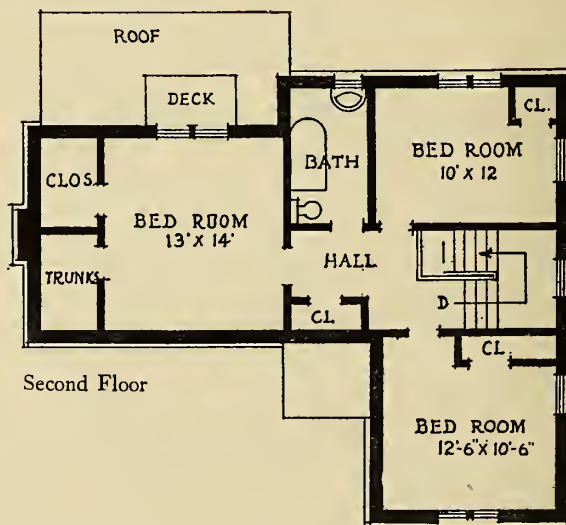


HOUSE No. 150

Designed by Paul R. Williams, Los Angeles, Calif.



First Floor



Second Floor

THIS simple cottage gives the impression of a bungalow because of the low sloping roof. It has a full second story, however, with windows in a gable and generous dormers on the sides and rear. The extreme dimensions of the house are 39 ft. wide, 32 ft. deep. The first floor has an attractive entrance hall, reached from the kitchen through the pantry. The sitting porch

opens directly from the living room. The first floor rooms are 8 ft. 6 in. high and the second, 8 ft. The house should preferably face northeast, thereby providing morning sun in the dining room and a pleasant exposure for the living room and garden which could be in the rear opposite the porch. The remainder of the rear plot could be devoted to the drying green and garage space.